



ПЯТЫЙ ПАРТНЕР

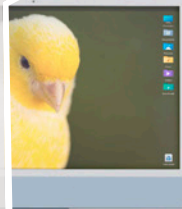
**bizhub
C3100i**

Colour A4 printer



KONICA MINOLTA

**bizhub
i-SERIES IS
SMARTER
WORKING**
RETHINK IT



Giving Shape to Ideas



CUSTOMER BENEFITS



Mobile connectivity

Print anytime from anywhere with Konica Minolta's innovative mobile technologies



Sustainability

Numerous eco features reduce energy consumption and costs

OPTIONS

1 MEDIA INPUT

Paper tray
PF-P26

2 MEDIA OUTPUT

Convenience stapler
EH-T592



LEGEND

- Mandatory option
- Option
- This option can only be installed with the respective option above it

FINISHING FUNCTIONALITIES



Duplex



Corner
Stapling
(offline)



DESCRIPTION

MEDIA INPUT

PF-P26 Paper tray 250 sheets, A4, 60-176 g/m²

MEDIA OUTPUT

EH-T592 Convenience stapler Convenient stapling of up to 50 sheets per set

TECHNICAL SPECIFICATIONS

SYSTEM SPECIFICATIONS

System speed A4	Up to 31/31 ppm (mono/colour)
Autoduplex speed A4	Up to 19/19 ppm (mono/colour)
1st page out time A4	10.0/11.0 sec. (mono/colour) ¹
Warm-up time	Approx. 35 sec. (mono/colour) ¹
Imaging technology	LED
Toner technology	Polymerized Toner
Panel size/resolution	2 line LCD / 240 x 48
System memory	512 MB (standard/max)
Interface	10/100/1,000-Base-T Ethernet; USB 2.0; Wi-Fi 802.11 b/g/n
Network protocols	TCP/IP (IPv4 / IPv6); SMB; LPD; IPP; SNMP; HTTP; HTTP(S); Bonjour
Printable paper size	A6-A4; customized paper sizes
Printable paper weight	60-176 g/m ²
Paper input capacity	300 sheets / 550 sheets (standard/max)
Manual bypass	50 sheets; A6-A4; custom sizes; 60-176 g/m ²
Finishing modes (optional)	Group; Sort; Staple (offline)
Automatic duplexing	A5-A4; 60-176 g/m ²
Output capacity	Up to 150 sheets
Duty cycle (monthly)	Rec. 1,600 pages; Max. ² 62,000 pages
Toner lifetime	Black up to 6,000 pages CMY up to 4,000 pages
Imaging unit lifetime	CMYK up to 50,000 pages (imaging unit)
Power consumption	220-240 V / 50/60 Hz; Less than 1.11 kW
System dimension (W x D x H)	410 x 430 x 255 mm (without options)
System weight	Approx. 17.4 kg (without options)

PRINTER SPECIFICATIONS

Print resolution	2400 x 600 dpi
Page description language	GDI; PCL 6 (XL3.0); PCL 5c; PostScript 3
Operating systems	Windows 8.1 (32/64); Windows 10 (32/64); Windows 11; Windows Server 2012; Windows Server 2012 R2; Windows Server 2016; Windows Server 2019; Windows Server 2022; macOS 10.12 or later
Printer fonts	94 PCL Latin; 93 PostScript 3 Emulation Latin
Mobile printing	AirPrint (iOS); Mopria (Android); WiFi Direct

SYSTEM FEATURES

Security	IP filtering and port blocking; SSL3 and TLS1.1/1.2/1.3 network communication; IEEE 802.1x support; User authentication; Secure print
Accounting	Up to 50 user accounts

¹ Warm-up time may vary depending on the operating environment and usage

² If the maximum volume is reached within a period of one year, then a maintenance cycle must be performed

- All specifications refer to A4-size paper of 80 g/m² quality.
- The support and availability of the listed specifications and functionalities varies depending on operating systems, applications and network protocols as well as network and system configurations.
- The stated life expectancy of each consumable is based on specific operating conditions such as page coverage for a particular page size (5% coverage of A4). The actual life of each consumable will vary depending on use and other printing variables including page coverage, page size, media type, continuous or intermittent printing, ambient temperature and humidity.
- Some of the product illustrations contain optional accessories.
- Specifications and accessories are based on the information available at the time of printing and are subject to change without notice.
- Konica Minolta does not warrant that any specifications mentioned will be error-free.
- All brand and product names may be registered trademarks or trademarks of their respective holders and are hereby acknowledged.

