

KONICA MINOLTA

PARTS GUIDE MANUAL

OCTOBER 2008

*magicolor 1600W/magicolor
1650EN
A034001*

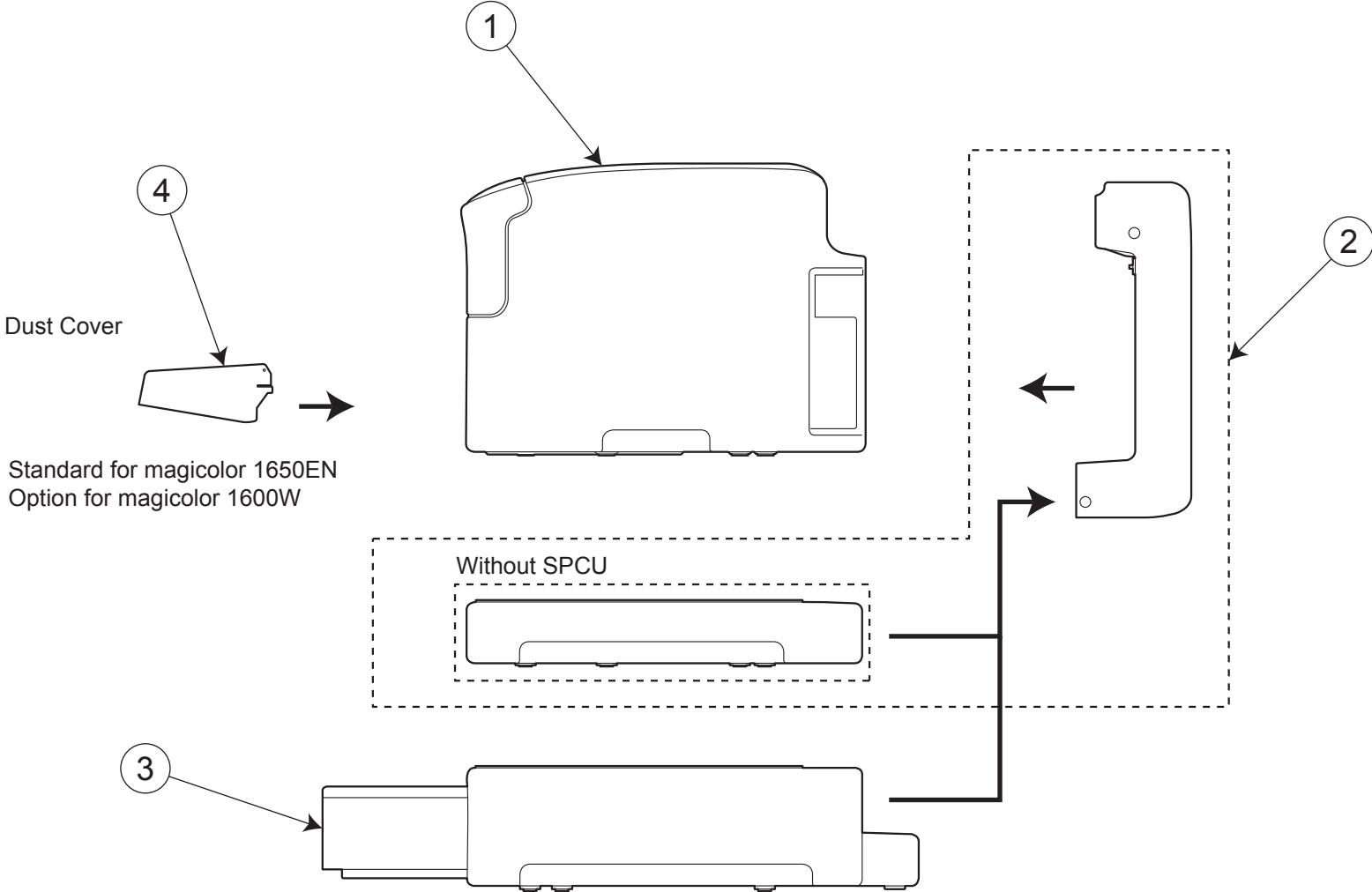
INFORMATION FOR PARTS GUIDE MANUAL

To find correct Parts No., refer to the "HOW TO MAKE THE BEST USE OF THIS MANUAL" in the following page.

HOW TO MAKE THE BEST USE OF THIS MANUAL

- 1 When you order, please check the proper figures beforehand that are on Our Parts Guide Manual, and order with the appropriate figures.
- 2 For screws, Nuts, Washers, retaining rings and Pins which are used in this model, one letter is shown on the Standard parts column of Parts list and exploded diagrams.
- 3 In order to maintain safety of the product, some specific parts composed of this product are set up as "essential safety parts".
- 4 The assigned parts number for the "essential safety parts" is indicated as "SP00-****".
When replacing these parts, follow precautions for disassembling and installing which are listed in the Service Manual.
Do not use any parts that are not set up as
- 5 ♣ means that there are exclusive parts for each destination.
Please check the appropriate destination when you order.
- 6 Revision Mark
Marked as ▲ on the illustration shows that the revision has been made.
- 7 All rights reserved. (any reprints or quotations are prohibited.)
Use of this parts guide manual should be strictly supervised to avoid disclosure of confidential information.

SYSTEM OUTLINE



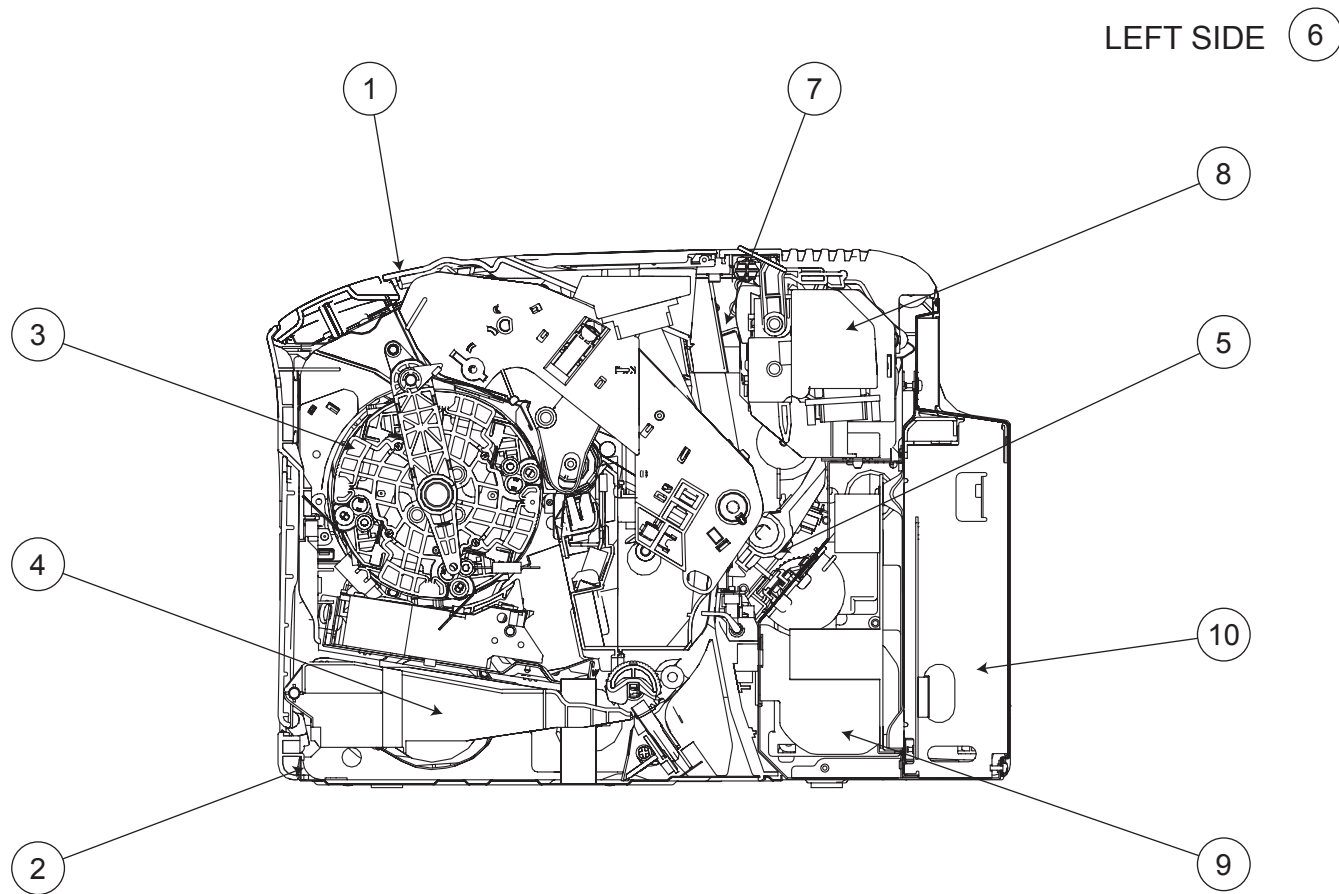
magicolor 1600W/magicolor 1650EN

GENERAL CONTENTS

No.	Description	Model
1	PRINTER COLOR	magicolor 1600W/magicolor 1650EN
2	DUPLEX	Duplex Option
3	PAPER FEEDER	Lower Feeder Unit
4	DUST COVER	Dust Cover

NOTE: Parts not listed with a part number are not available as spare part.

DIAGRAM OF MAIN PARTS SECTION



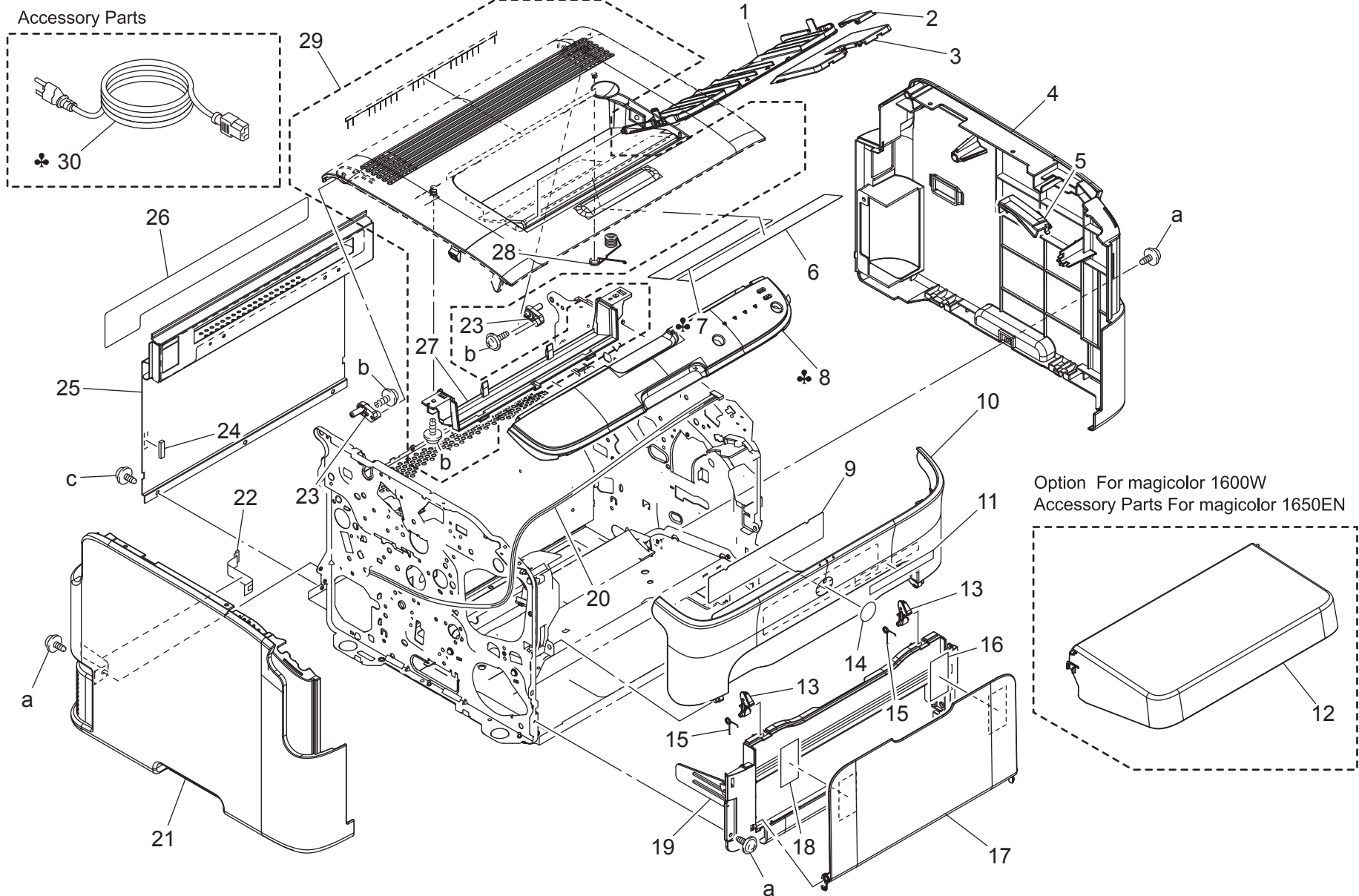
CONTENTS

No.	DESCRIPTION	PAGE No.
1	EXTERNAL PARTS	P1
2	MAIN FRAME SECTION	P2
3	RACK/RACK DRIVE SECTION	P3 P4
4	PAPER TAKE-UP SECTION	P5
5	TRANSFER SECTION	P6 P7
6	DRIVE SECTION	P8 P9
7	RIGHT GUIDE SECTION	P10
8	FUSING SECTION	P11
9	COOLING SECTION	P12
10	ELECTRICAL COMPONENTS	P13
11	WIRING ACCESSORIES AND JIGS	P14

NOTE: Parts not listed with a part number are not available as spare part.

EXTERNAL PARTS

P 1



magicolor 1600W/magicolor 1650EN

EXTERNAL PARTS

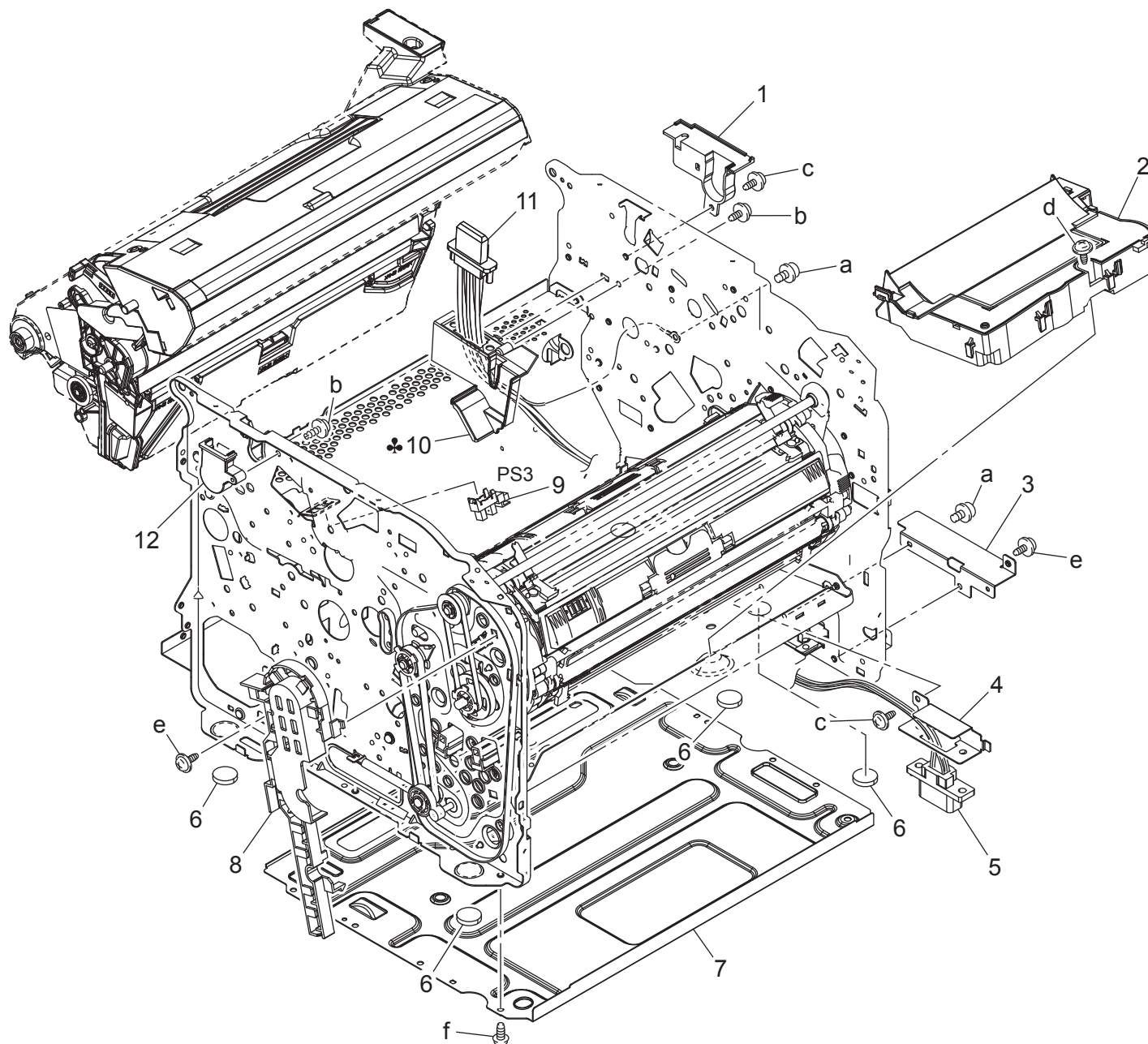
Key	Part No.	Description	Destinations	Class	QTY	Standard parts
1	A034160702	Tray MC1600W 1650				a
2	A034162400	Tray MC1600W 1650				
3	A034160601	Tray MC1600W 1650				
8	A034R71800	Operation Panel(SFP-P) MC1650EN				
8	A034R71900	Operation Panel(SFP-RL) MC1600W				
12	A034162201	Dust Cover MC16X0				
17	A034560601	Tray (Output Tray) MC16X0				

NOTE: Parts not listed with a part number are not available as spare part.

magicolor 1600W/magicolor 1650EN

MAIN FRAME SECTION

P 2



magicolor 1600W/magicolor 1650EN

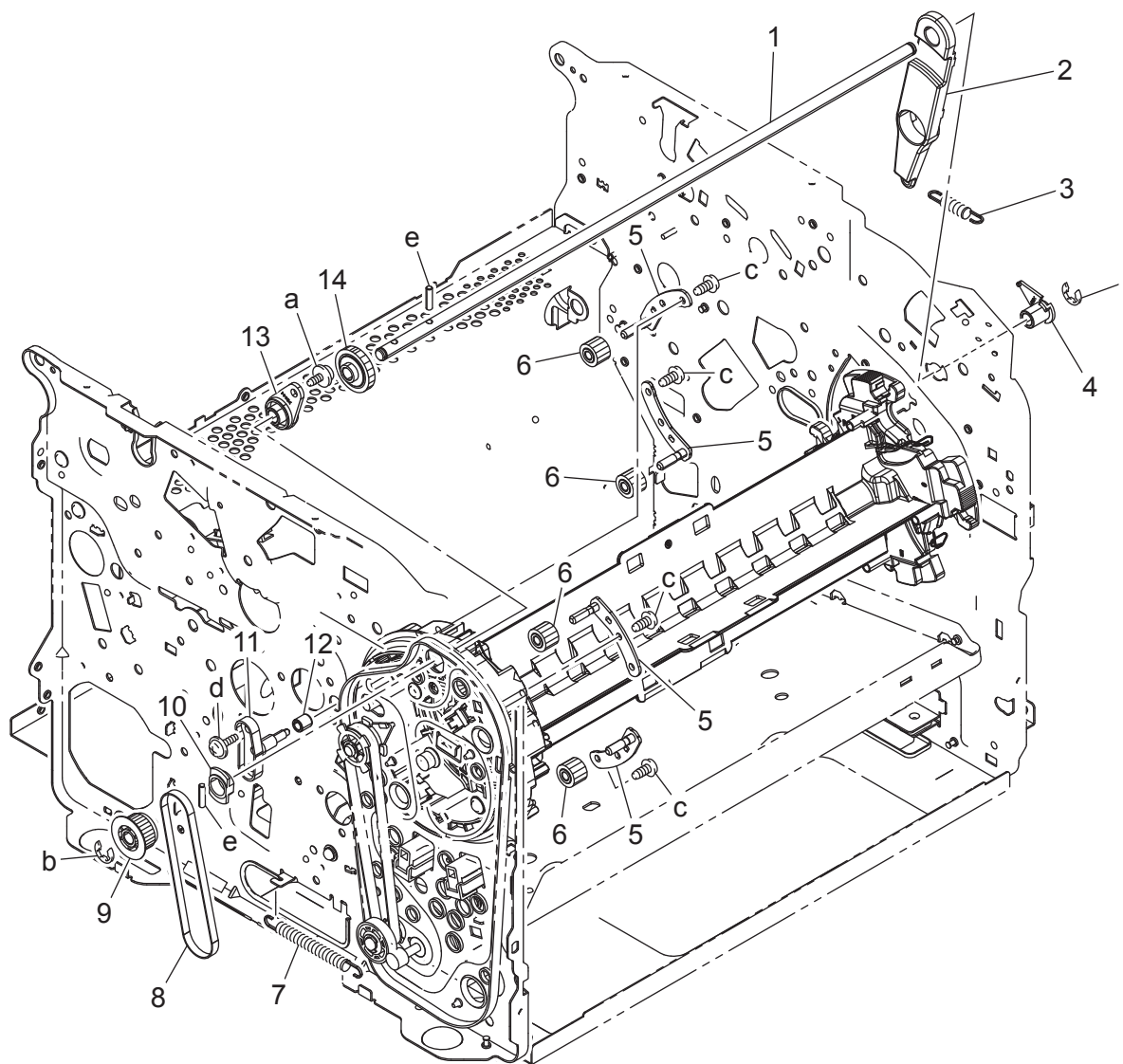
MAIN FRAME SECTION

Key	Part No.	Description	Destinations	Class	QTY	Standard parts
2	A034R70700	Print Head Assy MC16X0				
9	9335130061	PHOTO INTERRUPTER				

NOTE: Parts not listed with a part number are not available as spare part.

magicolor 1600W/magicolor 1650EN

RACK/RACK DRIVE SECTION



RACK/RACK DRIVE SECTION

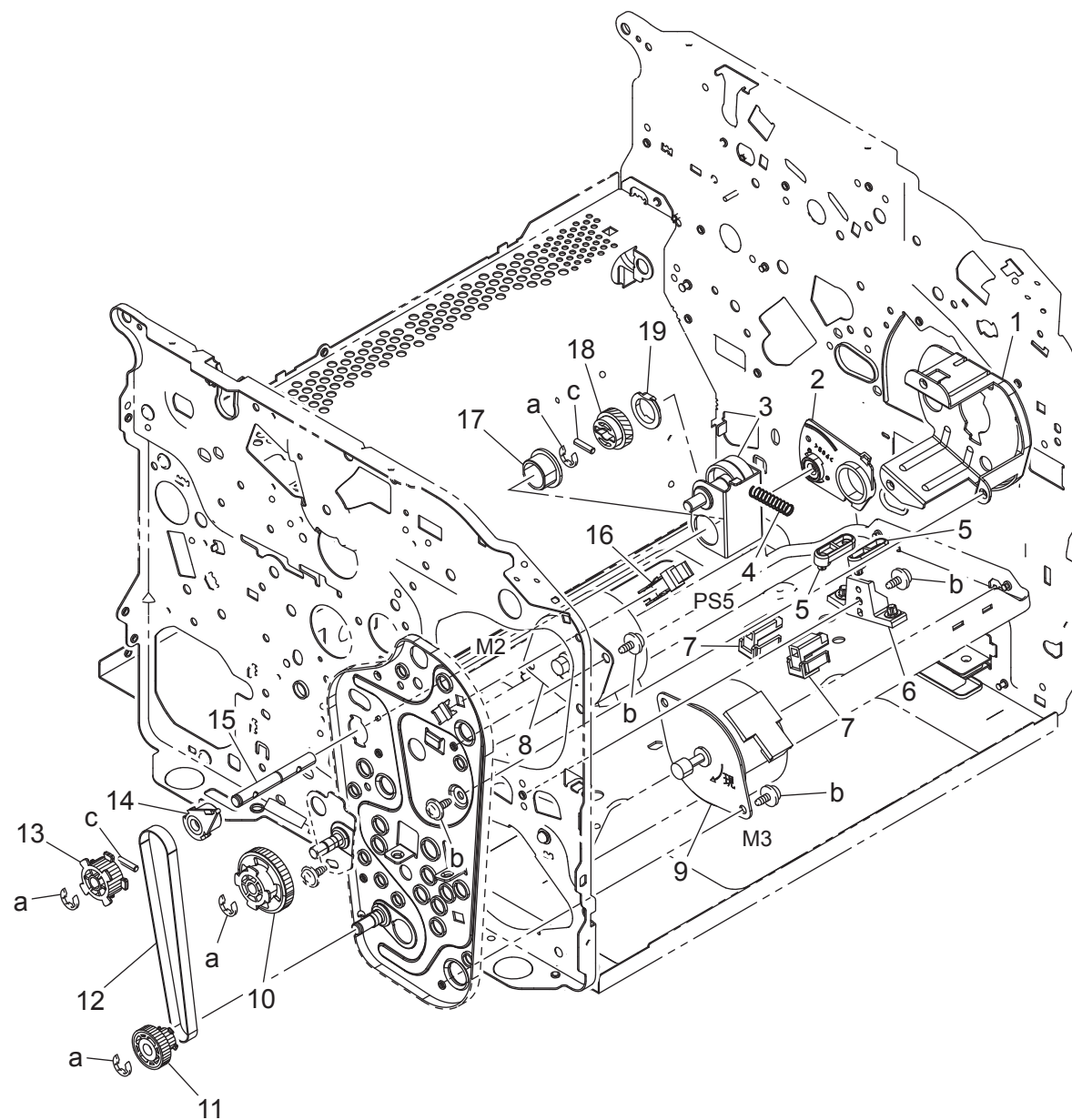
Key	Part No.	Description	Destinations	Class	QTY	Standard parts

NOTE: Parts not listed with a part number are not available as spare part.

magicolor 1600W/magicolor 1650EN



RACK/RACK DRIVE SECTION



magicolor 1600W/magicolor 1650EN

RACK/RACK DRIVE SECTION

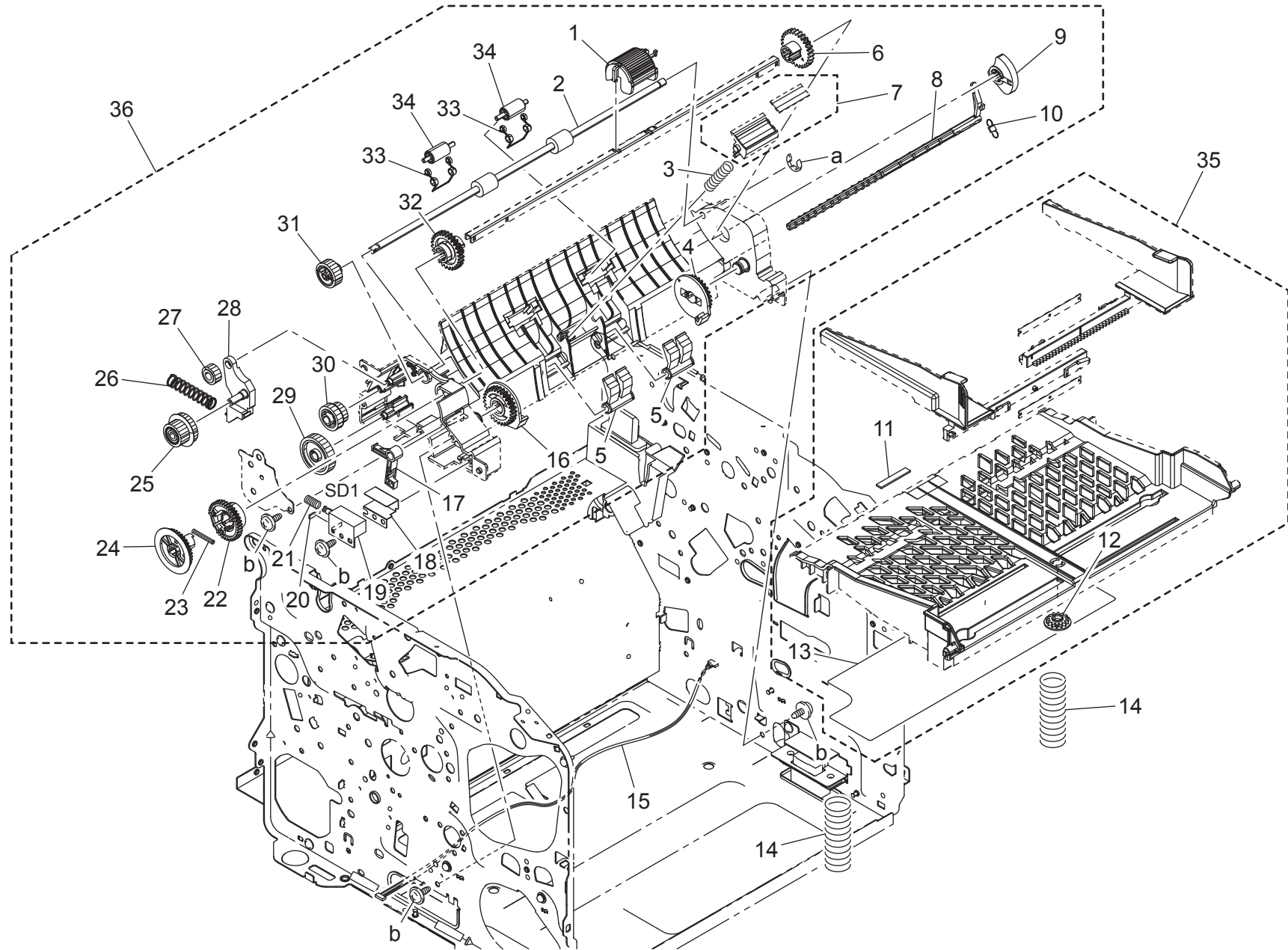
Key	Part No.	Description	Destinations	Class	QTY	Standard parts
16	9335130061	PHOTO INTERRUPTER				

NOTE: Parts not listed with a part number are not available as spare part.

magicolor 1600W/magicolor 1650EN

PAPER TAKE-UP SECTION

P 5



magicolor 1600W/magicolor 1650EN

PAPER TAKE-UP SECTION

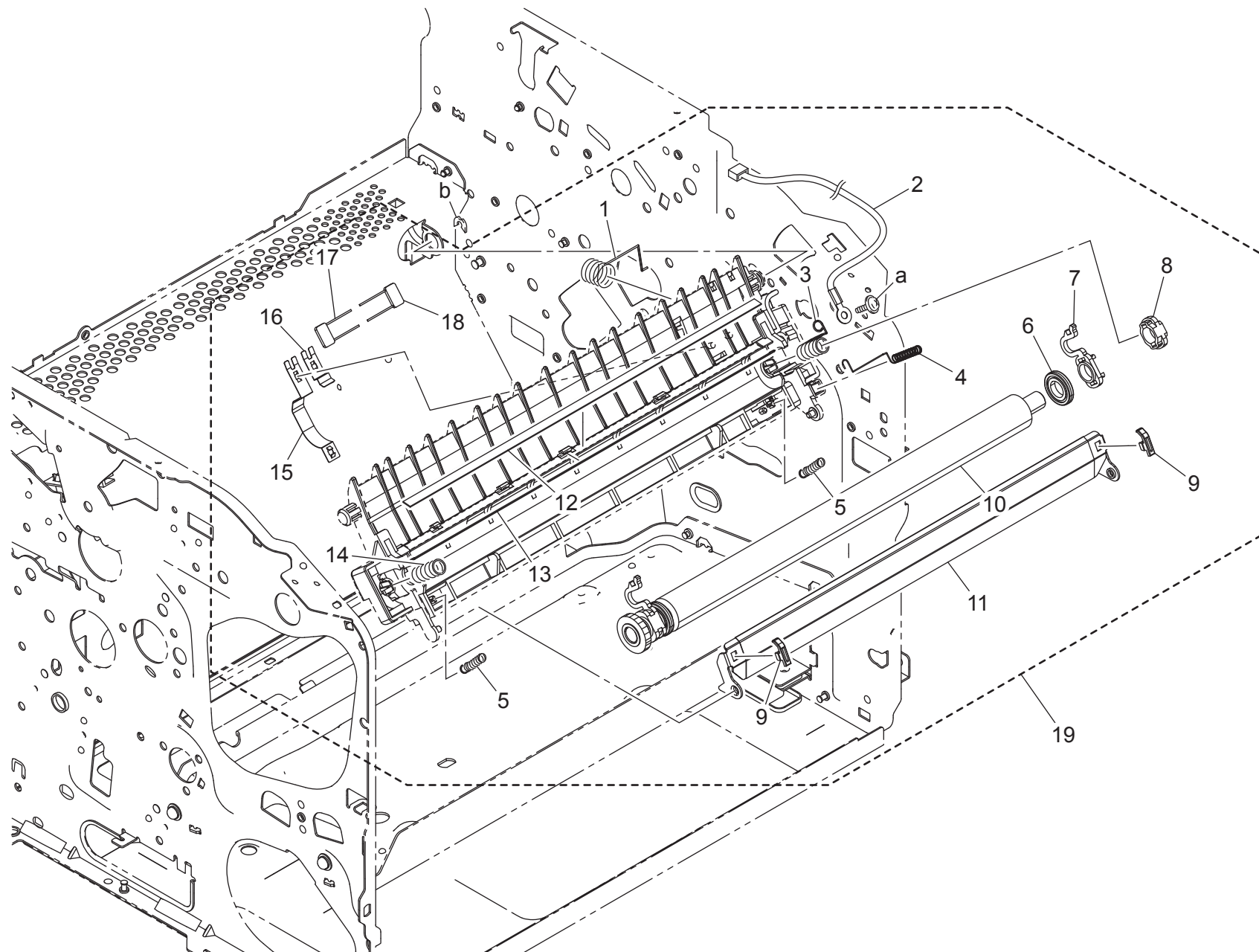
Key	Part No.	Description	Destinations	Class	QTY	Standard parts
1	4139306201	PICK UP ROLLER, MC24x0/25x0/2590/C10				
35	A034R70200	Lifting Plate Assy MC16X0				
36	A034R70100	Paper Feed Assy MC16X0				

NOTE: Parts not listed with a part number are not available as spare part.

magicolor 1600W/magicolor 1650EN

TRANSFER SECTION

P 6



magicolor 1600W/magicolor 1650EN

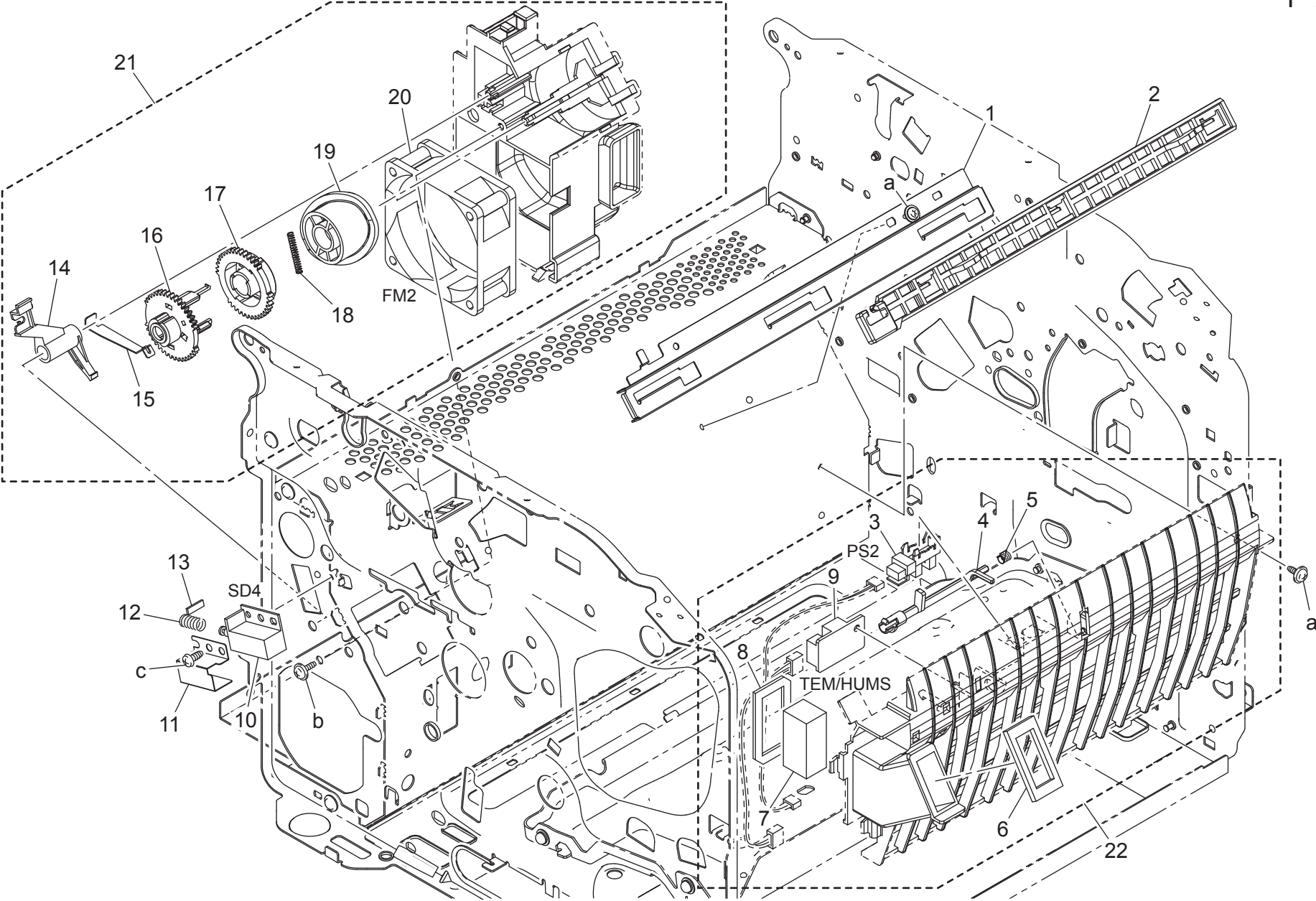
TRANSFER SECTION

Key	Part No.	Description	Destinations	Class	QTY	Standard parts
10	A034R71111	Transfer Roller MC16X0				
19	A034R70000	2nd Transfer Assy MC16X0				

NOTE: Parts not listed with a part number are not available as spare part.

magicolor 1600W/magicolor 1650EN

TRANSFER SECTION



magicolor 1600W/magicolor 1650EN

TRANSFER SECTION

Key	Part No.	Description	Destinations	Class	QTY	Standard parts
3	9335130061	PHOTO INTERRUPTER				
20	4556M10000	FAN MOTOR MC469X, C20				
21	A034R71000	Guide Assy MC16X0				
22	A034R70800	Guide Assy MC16X0				

NOTE: Parts not listed with a part number are not available as spare part.

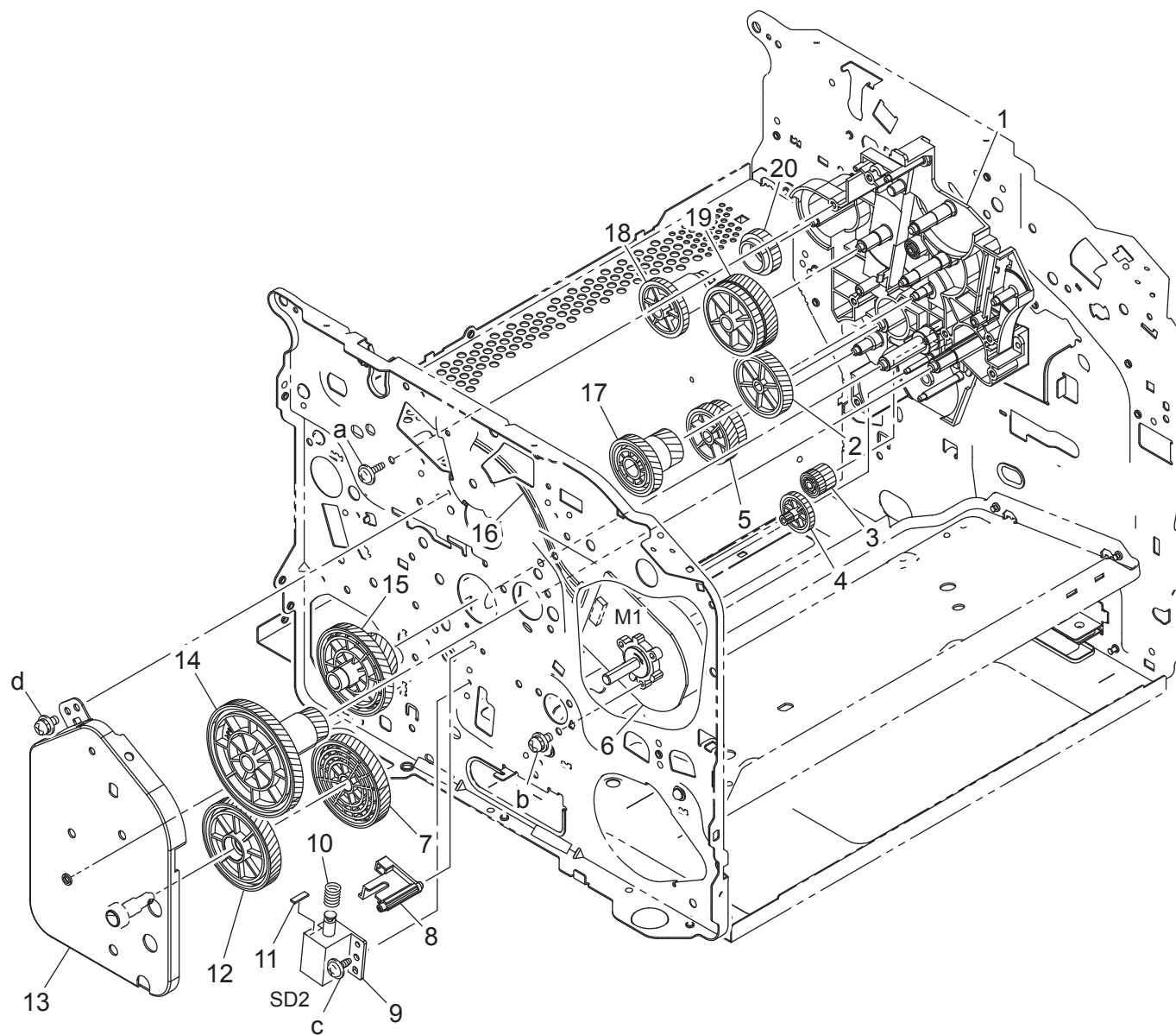
magicolor 1600W/magicolor 1650EN



Order here
8 (495) 646-0426
www.km-shop.ru

ПЯТЫЙ ПАРТНЕР

DRIVE SECTION



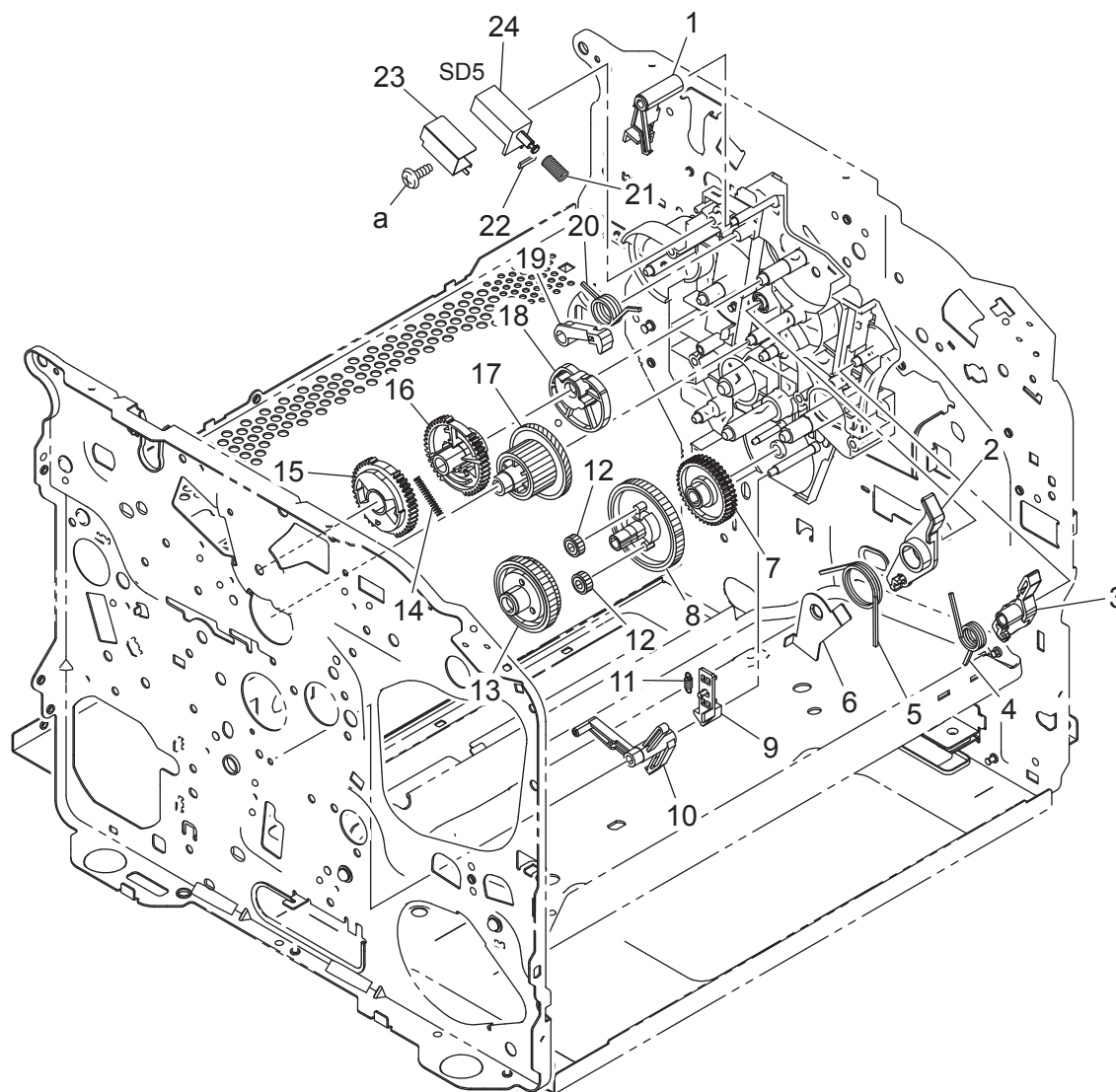
magicolor 1600W/magicolor 1650EN

DRIVE SECTION

Key	Part No.	Description	Destinations	Class	QTY	Standard parts

NOTE: Parts not listed with a part number are not available as spare part.





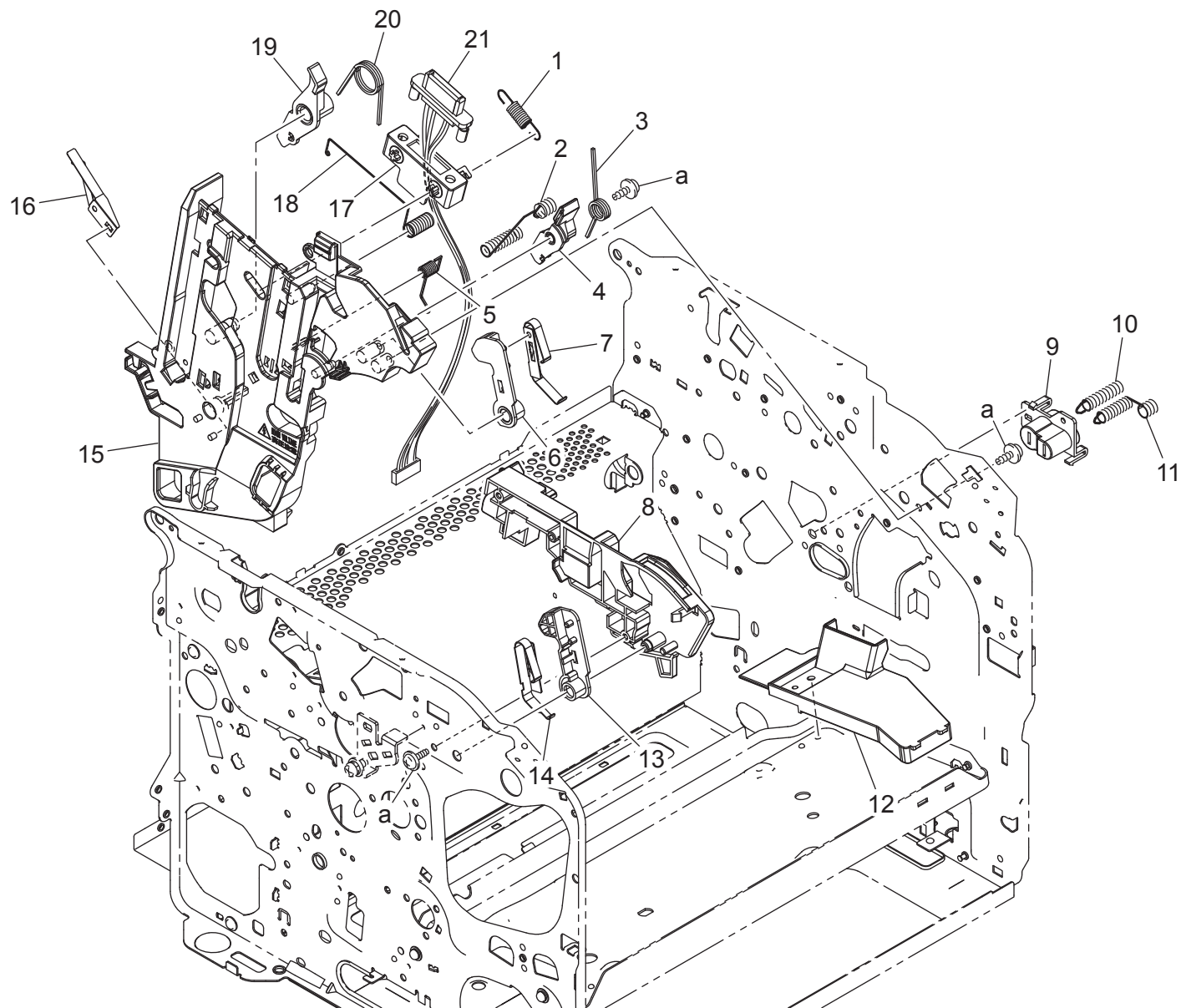
DRIVE SECTION

Key	Part No.	Description	Destinations	Class	QTY	Standard parts

NOTE: Parts not listed with a part number are not available as spare part.

magicolor 1600W/magicolor 1650EN

RIGHT GUIDE SECTION



magicolor 1600W/magicolor 1650EN

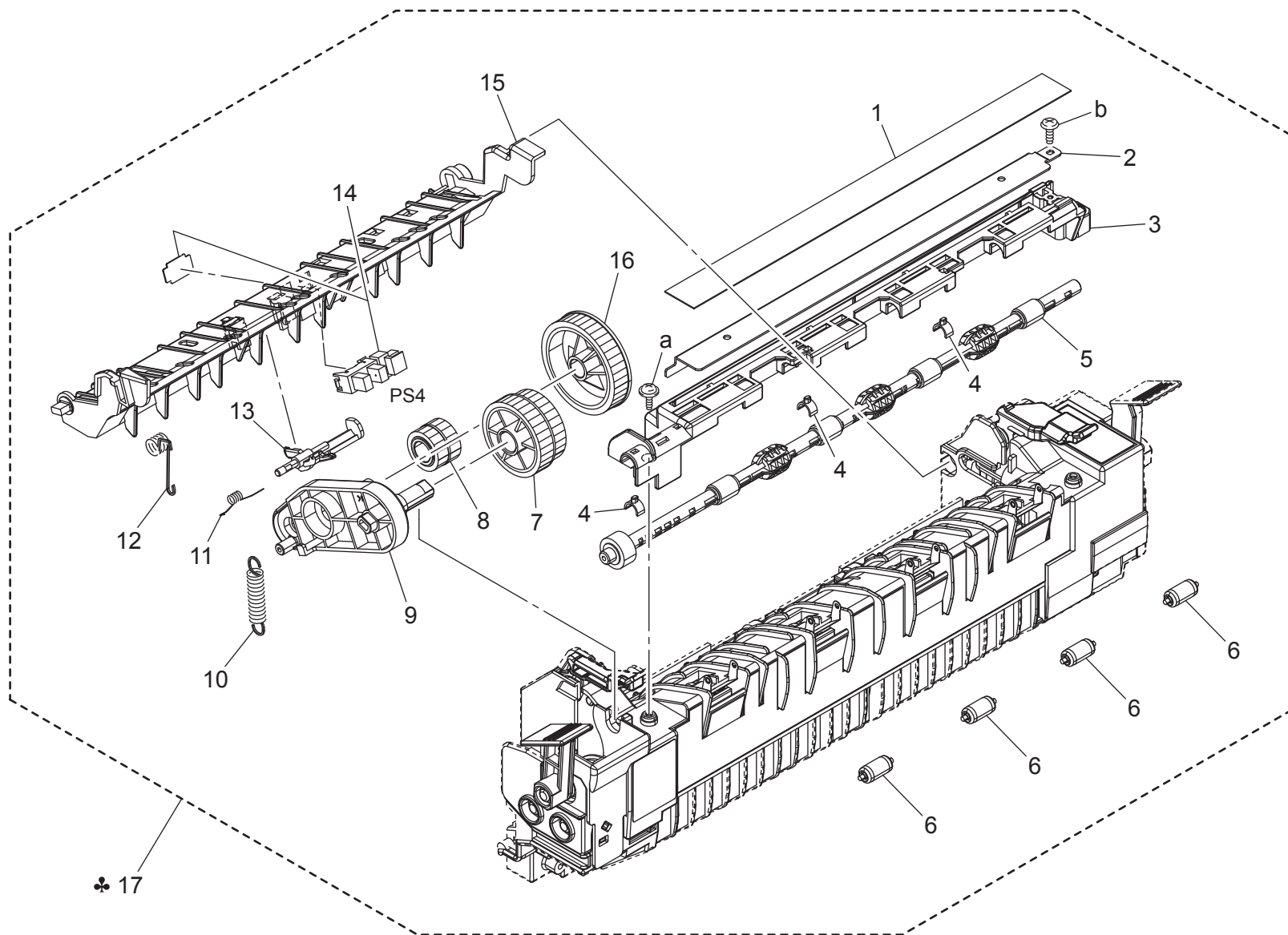
RIGHT GUIDE SECTION

Key	Part No.	Description	Destinations	Class	QTY	Standard parts

NOTE: Parts not listed with a part number are not available as spare part.

magicolor 1600W/magicolor 1650EN

FUSING SECTION



FUSING SECTION

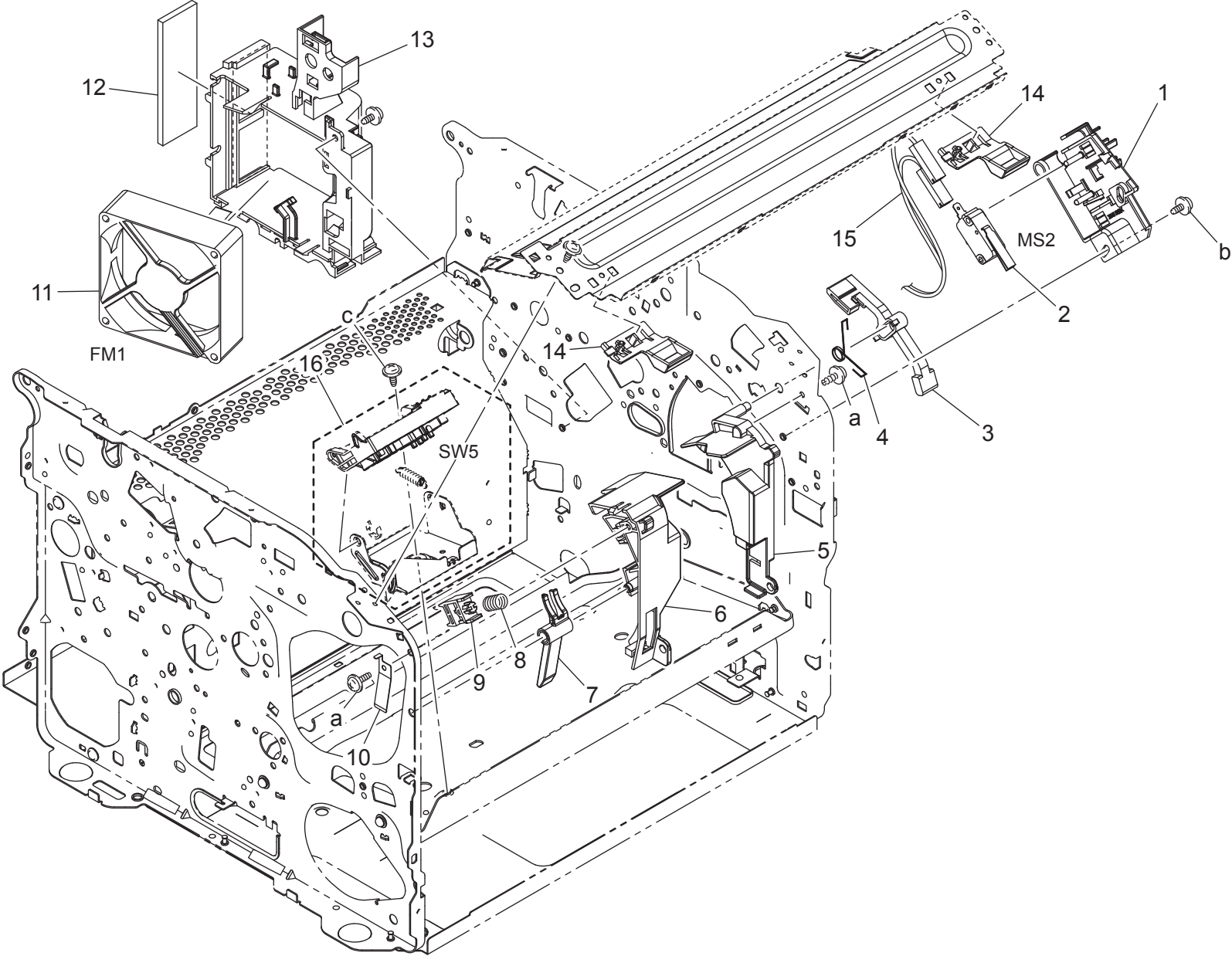
Key	Part No.	Description	Destinations	Class	QTY	Standard parts
14	A034R90000	PHOTO INTERRUPTER				
17	A12J021	Fusing(SFP-230V) MC1600W/1650EN				

NOTE: Parts not listed with a part number are not available as spare part.

magicolor 1600W/magicolor 1650EN



COOLING SECTION



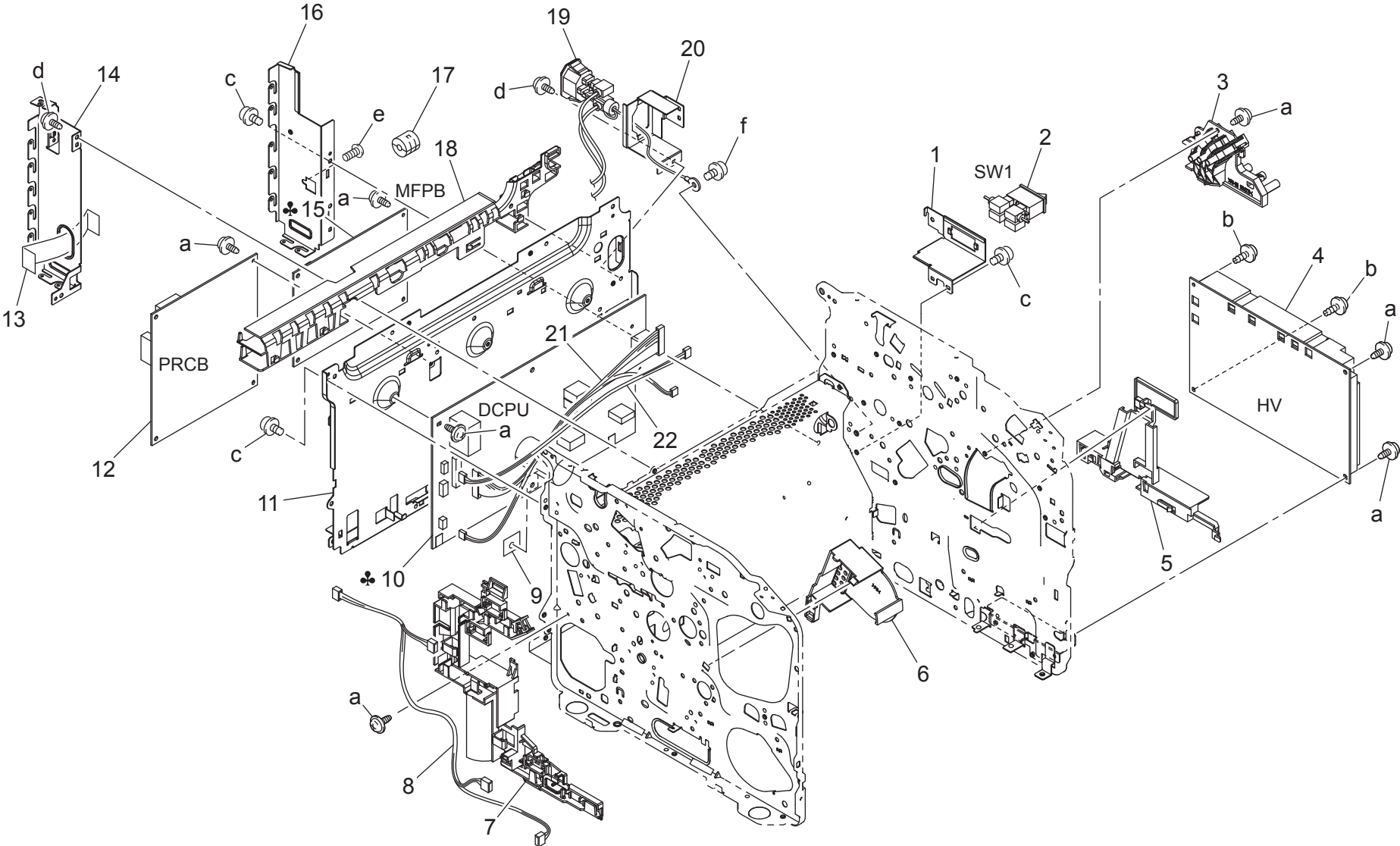
magicolor 1600W/magicolor 1650EN

COOLING SECTION

Key	Part No.	Description	Destinations	Class	QTY	Standard parts
11	4139M0000	FAN MOTOR FM2 MC2490/2500W/2530/2590/C10				

NOTE: Parts not listed with a part number are not available as spare part.

magicolor 1600W/magicolor 1650EN



magicolor 1600W/magicolor 1650EN

ELECTRICAL COMPONENTS

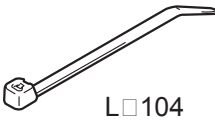
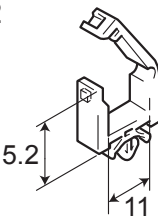
Key	Part No.	Description	Destinations	Class	QTY	Standard parts
4	A034M40401	High voltage unit MC16X0				
10	A034M40101	Power Supply MC1600W				
10	A034M40301	Power Supply MC1650EN/1680/90MF				
12	A034H00106	PWB Assembly(PWB-A Assy) MC 1600W/1650EN				
15	A034H12005	PWB Assembly(PS/PCL) MC1650EN				
15	A034PP0000	Controller Main Board(RL) MC1600W				

NOTE: Parts not listed with a part number are not available as spare part.

magicolor 1600W/magicolor 1650EN

WIRING ACCESSORIES AND JIGS

P 14

1  L□104	6	11	16	21	26	31	36
2  5.2 11	7	12	17	22	27	32	37
3	8	13	18	23	28	33	38
4	9	14	19	24	29	34	39
5	10	15	20	25	30	35	40

magicolor 1600W/magicolor 1650EN

WIRING ACCESSORIES AND JIGS

Key	Part No.	Description	Destinations	Class	QTY	Standard parts

NOTE: Parts not listed with a part number are not available as spare part.

magicolor 1600W/magicolor 1650EN

DESTINATION

Destination No.		Destinations		V	Hz	Model No.
A	A1	JAPAN		100	50/60	A034001/ A034002
	A2	JAPAN		200	50/60	
B		USA, CANADA		120	60	A034011/ A034012
C		EUROPEAN TYPE		220-240	50/60	A034021/ A034022
D	D1	S.E ASIA TYPE	THAILAND, SRI LANKA, SINGAPORE, MALAYSIA, HONG KONG, PAKISTAN, INDIA, BANGLADESH, INDONESIA	220-240	50/60	A034041/ A034042
	D3	OCEANIA TYPE	AUSTRALIA, NEW ZEALAND	220-240	50/60	A034041/ A034042
E		PHILIPPINES		220-240	50/60	A034041/ A034042
F	F1	SAUDI ARABIA		127	60	
	F2	SAUDI ARABIA		220-240	50/60	
G	G1	C.S AMERICA		220-240	50/60	
	G2	C.S AMERICA		120	60	
H		TAIWAN		110	60	
I		JORDAN, LEBANON, SYRIA, SOUTH AFRICA, IRAQ, IRAN, N.YEMEN, CAMEROON, UAE, BAHRAIN, OMAN, QATAR, KUWAIT, KENYA, TUNISIA, IVORY COAST, MOROCCO		220-240	50/60	
J		CHINA		220-240	50/60	A034081/ A034082

magicolor 1600W/magicolor 1650EN

Destination No.	Destinations	V	Hz	Model No.
K	KOREA	220-240	50/60	A034041/ A034042

NOTE: Parts not listed with a part number are not available as spare part.


 Order here
 8 (495) 646-0426
 ПЯТЫЙ ПАРТНЕР www.km-shop.ru

magicolor 1600W/magicolor 1650EN