

KONICA MINOLTA

PARTS GUIDE MANUAL

DECEMBER 2010

magicolor 4750DN

magicolor 4750EN

A0VD011

INFORMATION FOR PARTS GUIDE MANUAL

To find correct Parts No., refer to the "HOW TO MAKE THE BEST USE OF THIS MANUAL" in the following page.

HOW TO MAKE THE BEST USE OF THIS MANUAL

- 1 When you order, please check the proper figures beforehand that are on Our Parts Guide Manual, and order with the appropriate figures.
- 2 For screws, Nuts, Washers, retaining rings and Pins which are used in this model, one letter is shown on the Standard parts column of Parts list and exploded diagrams.
- 3 In order to maintain safety of the product, some specific parts composed of this product are set up as "essential safety parts".
- 4 The assigned parts number for the "essential safety parts" is indicated as "SP00-****".
When replacing these parts, follow precautions for disassembling and installing which are listed in the Service Manual.
Do not use any parts that are not set up as
- 5 ♣ means that there are exclusive parts for each destination.
Please check the appropriate destination when you order.
- 6 Revision Mark
Marked as ▲ on the illustration shows that the revision has been made.
- 7 All rights reserved. (any reprints or quotations are prohibited.)
Use of this parts guide manual should be strictly supervised to avoid disclosure of confidential information.

パーツガイドマニュアルのご案内

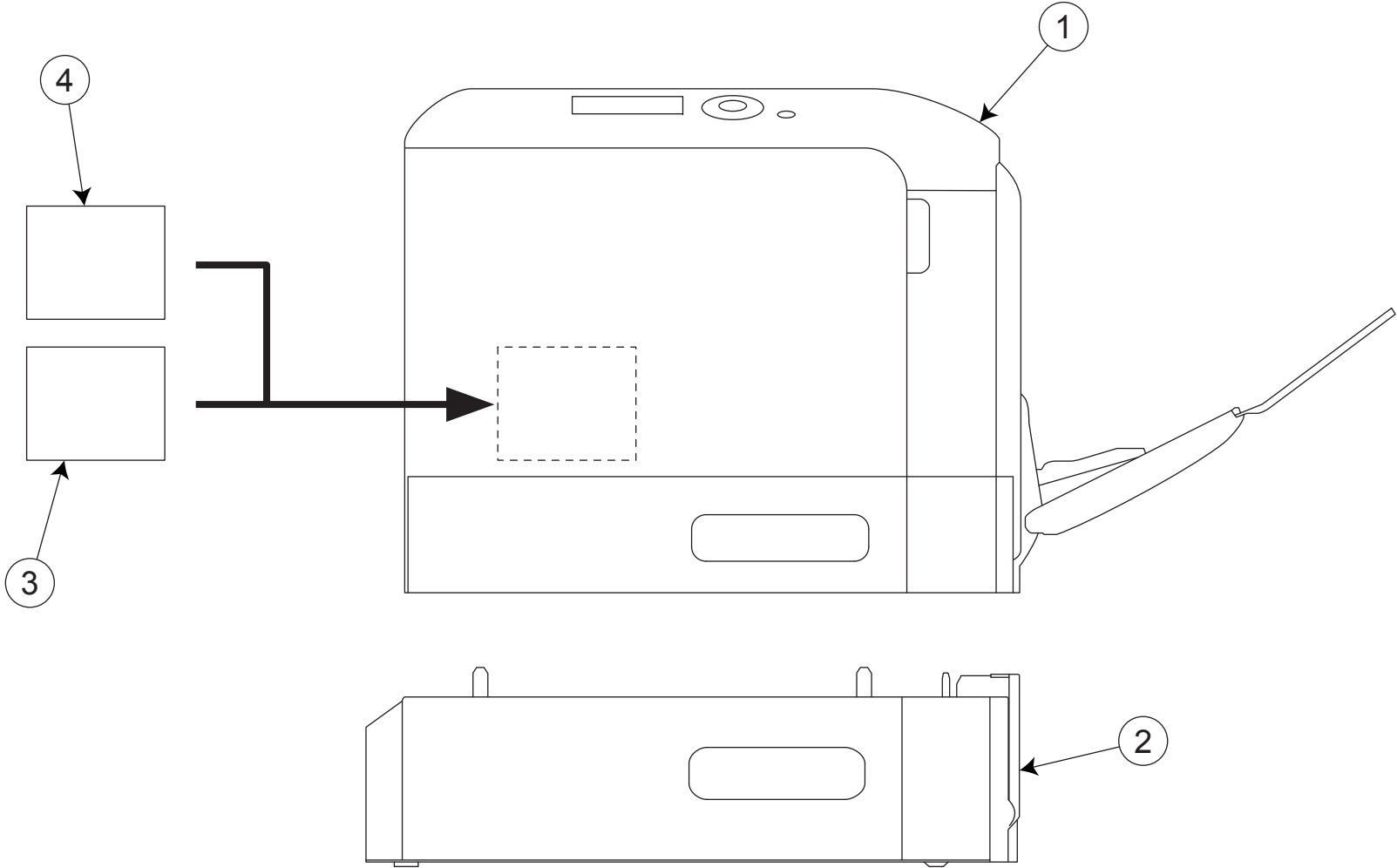
サービス部品をご発注の際には、下記に示す“パーツガイドマニュアルの活用にあたって”をご参照の上、正しい部品番号にてお願い致します。

パーツガイドマニュアルの活用にあたって

- 1 部品発注の際には、掲載されている部品番号の桁数を確認し、掲載されている桁数で発注願います。
- 2 この製品に使用されているネジ、ナット、ワッシャー、止め輪、ピンなどは、リストの右側の Standard parts 欄に a,b,c,……で表示し、イラストにも a,b,c,……表示してあります。
- 3 製品の安全性を維持する為に、製品に使用される特定の部品を「重要保安部品」として設定しています。
- 4 重要保安部品の部品番号は、“SP00-****”と記載されていますので、部品交換時は、サービスマニュアル記載の分解・組み立ての注意事項に従って作業をして下さい。
また、指定以外の部品は一切使用しないで下さい。
- 5 本文に ♣ が表示されている部品は、仕向け地毎に専用部品がある事を意味しています。
オーダーされる時は、仕向け地を確認して下さい。
- 6 改訂記号について
イラスト上に ▲ 印が表示されている部分は、改訂された事を表します。
- 7 著作権所有（無断転載及び無断引用の禁止）
本パーツガイドマニュアルについては、機密保持等その扱いには十分注意して下さい。万一取り扱いを誤った場合には、法律で処罰されることがあります。

05/24/2010

SYSTEM OUTLINE



magicolor 4750DN/magicolor 4750EN

GENERAL CONTENTS

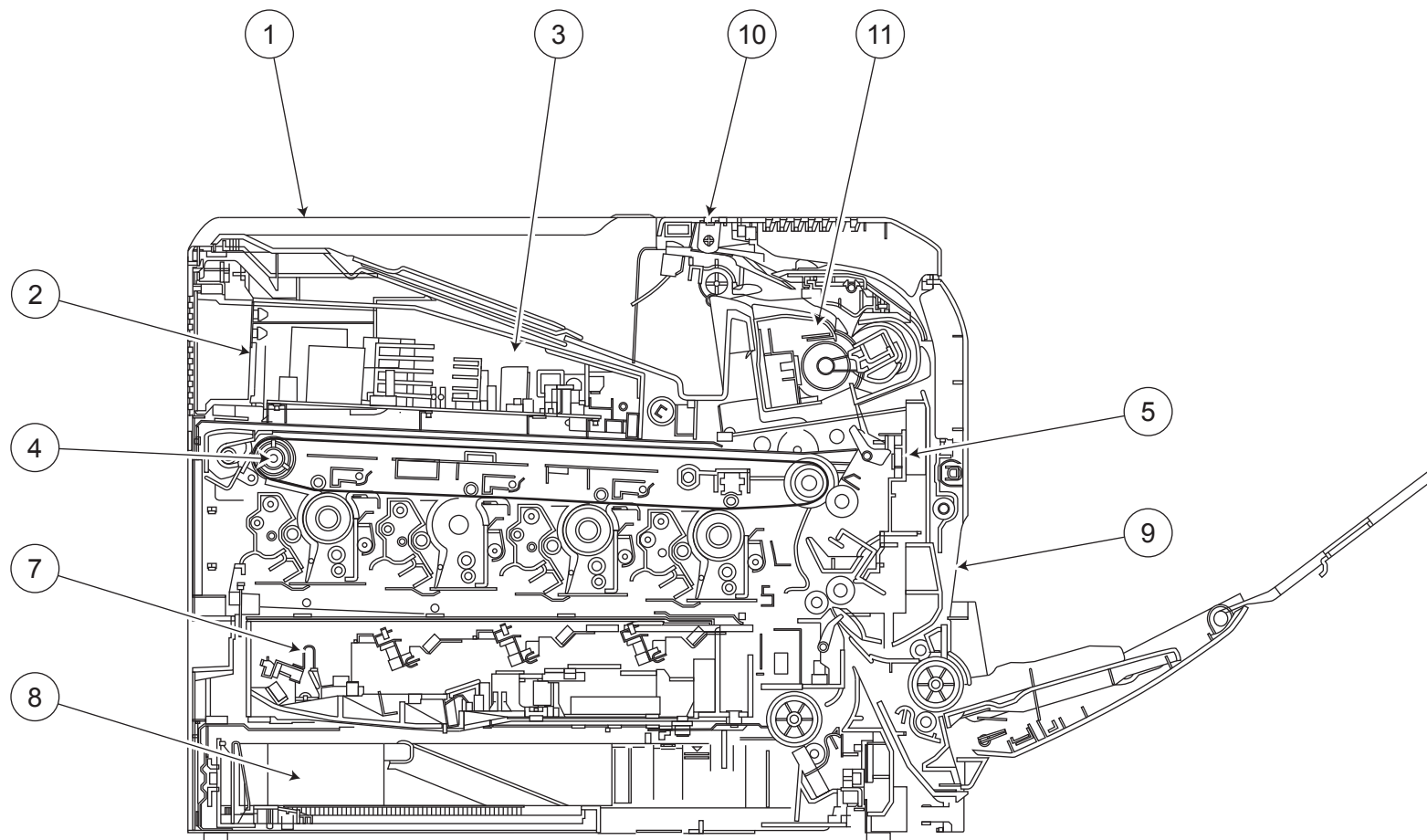
No.	Description	Model
1	PRINTER COLOR	magicolor 4750DN/magicolor 4750EN
2	PAPER FEEDER	PF-P07
3	OTHER OPTION	HD-P03
4	OTHER OPTION	MK-725

magicolor 4750DN/magicolor 4750EN

DIAGRAM OF MAIN PARTS SECTION

REAR SIDE

6 12 13 14



magicolor 4750DN/magicolor 4750EN

CONTENTS

No.	DESCRIPTION	名称	PAGE No.
1	EXTERNAL PARTS	外装部	P1
2	POWER SUPPLY SECTION	低圧電源部	P2
3	TONER BOTTLE DRIVE SECTION	トナーボトル駆動部	P3
4	TRANSFER BELT UNIT	転写ベルトユニット	P4
5	TRANSFER GUIDE SECTION	転写ガイド部	P5
6	HIGH VOLTAGE SECTION	高圧電源部	P6
7	PRINT HEAD SECTION	P / H 部	P7
8	CASSETTE SECTION	カセット部	P8
9	VERTICAL CONVEYANCE SECTION	縦搬送部	P9 P10 P11
10	DUP REVERSE DRIVE SECTION	D U P 反転駆動部	P12
11	FUSING SECTION	定着部	P13
12	MAIN DRIVE SECTION	メイン駆動部	P14 P15 P16
13	PAPER FEED DRIVE SECTION	給紙駆動部	P17
14	ELECTRICAL COMPONENTS	電装部	P18
15	WIRING	束線	P19 P20
16	WIRING ACCESSORIES AND JIGS	配線部品・治具	P21

magicolor 4750DN/magicolor 4750EN

INDEX

Parts No.	Page No.
4002 3123 03	17-8
4030 3034 01	8-2
4030 3034 01	9-9
4030 7500 01	1-9
4036 3014 01	15-5
4131 3003 01	8-1
4131 3056 01	8-7
4131 3056 01	9-7
4131 3057 02	8-8
4136 N300 00	18-1
4138 3032 02	8-3
4138 3032 02	9-8
4138 3255 01	9-3
4138 3528 02	11-4
4138 3532 02	11-6
4138 7316 01	8-12
4138 7316 01	9-16
4139 6056 03	3-11
4139 M100 00	2-1
4658 0151 06	8-4
4658 0151 06	9-12
9313 1300 51	12-1
9335 1400 51	7-16
9381 4200 21	18-1
9381 4300 31	18-1
9J06 M601 00	2-10
A00F 2139 00	15-2
A011 9462 00	1-16
A011 M200 00	11-18
A011 M200 00	15-4
A02E M200 00	17-2
A034 2134 00	11-24
A034 2140 00	11-23
A034 5638 00	11-12
A034 M200 00	11-25
A034 M602 00	18-14
A0VD 1013 01	7-5
A0VD 1022 02	2-2
A0VD 1023 01	2-15
A0VD 1041 02	2-4

Parts No.	Page No.
A0VD 1074 01	7-18
A0VD 1075 00	7-20
A0VD 1087 03	7-14
A0VD 1090 01	7-21
A0VD 1094 00	7-17
A0VD 1101 04	4-6
A0VD 1102 05	4-18
A0VD 1104 00	4-8
A0VD 1105 00	4-4
A0VD 1111 02	4-10
A0VD 1112 03	4-11
A0VD 1113 02	7-4
A0VD 1114 02	4-13
A0VD 1115 02	4-19
A0VD 1116 00	4-2
A0VD 1117 00	4-1
A0VD 1141 01	4-3
A0VD 1151 00	4-20
A0VD 1152 00	4-22
A0VD 1153 01	4-21
A0VD 1154 00	4-25
A0VD 1321 01	18-6
A0VD 1324 01	18-2
A0VD 1328 02	18-8
A0VD 1331 02	2-14
A0VD 1334 01	18-3
A0VD 1341 00	4-9
A0VD 1343 00	4-27
A0VD 1352 01	2-8
A0VD 1353 03	2-7
A0VD 1354 02	2-9
A0VD 1355 00	2-5
A0VD 1361 00	18-10
A0VD 1367 01	7-15
A0VD 1368 00	4-7
A0VD 1372 00	2-3
A0VD 1392 01	18-9
A0VD 1394 01	6-3
A0VD 1395 00	6-4
A0VD 1397 00	2-17

Parts No.	Page No.
A0VD 1601 00	1-2
A0VD 1602 01	1-14
A0VD 1603 02	1-1
A0VD 1604 05	1-12
A0VD 1605 02	1-8
A0VD 1607 00	1-15
A0VD 1612 01	1-3
A0VD 1613 03	13-1
A0VD 1617 00	3-12
A0VD 1618 02	1-4
A0VD 1620 00	1-5
A0VD 1621 01	10-2
A0VD 1623 00	9-14
A0VD 1641 02	13-4
A0VD 1642 02	13-3
A0VD 1644 00	13-19
A0VD 1645 00	13-2
A0VD 2113 03	14-6
A0VD 2147 00	4-23
A0VD 2183 01	15-6
A0VD 2198 00	14-5
A0VD 2202 01	14-4
A0VD 2203 00	14-3
A0VD 2309 01	17-4
A0VD 2312 00	17-3
A0VD 2333 01	17-5
A0VD 2351 01	7-13
A0VD 2353 01	11-3
A0VD 2354 00	7-7
A0VD 2355 00	7-10
A0VD 2356 00	7-8
A0VD 2357 00	7-6
A0VD 2359 00	7-9
A0VD 2364 00	3-1
A0VD 2365 00	3-5
A0VD 2366 01	3-2
A0VD 2369 02	3-3
A0VD 2374 00	3-8
A0VD 2378 00	3-9
A0VD 2485 01	15-3

Parts No.	Page No.
A0VD 3622 01	4-15
A0VD 3623 00	4-14
A0VD 3624 00	4-16
A0VD 3625 00	4-17
A0VD 3626 02	7-12
A0VD 3627 02	7-11
A0VD 3637 00	4-24
A0VD 4910 00	3-14
A0VD 4911 00	3-15
A0VD 4912 00	3-16
A0VD 4913 00	3-17
A0VD 5613 01	9-5
A0VD 5617 00	9-2
A0VD 5618 00	9-6
A0VD 6211 00	8-5
A0VD 6211 00	9-13
A0VD 6231 01	8-9
A0VD 6232 00	8-10
A0VD 6241 00	17-7
A0VD 6248 00	8-6
A0VD 6248 00	9-10
A0VD 7017 00	10-3
A0VD 7021 01	11-8
A0VD 7023 00	11-5
A0VD 7024 00	11-21
A0VD 7025 01	11-7
A0VD 7029 02	11-9
A0VD 7030 01	11-15
A0VD 7035 01	11-19
A0VD 7037 00	11-16
A0VD 7043 00	11-13
A0VD 7044 00	11-11
A0VD 7047 00	11-10
A0VD 7049 00	11-20
A0VD 7051 01	11-14
A0VD 7052 00	11-22
A0VD 7053 03	11-17
A0VD 7061 01	5-7
A0VD 7062 01	5-6
A0VD 7063 00	5-2

Parts No.	Page No.
A0VD 7064 00	5-1
A0VD 7065 00	5-4
A0VD 7071 01	5-12
A0VD 7072 00	5-11
A0VD 7073 03	5-10
A0VD 7075 01	5-14
A0VD 8201 03	12-10
A0VD 8202 00	12-9
A0VD 8204 03	12-19
A0VD 8205 01	12-20
A0VD 8208 00	12-22
A0VD 8209 00	12-21
A0VD 8211 00	12-18
A0VD 8224 00	12-7
A0VD 8227 00	12-3
A0VD 8228 00	12-2
A0VD 8231 00	12-4
A0VD 8232 00	12-6
A0VD 8234 00	12-5
A0VD 8256 00	12-11
A0VD 8901 02	13-11
A0VD 8902 00	13-13
A0VD 8903 01	13-12
A0VD 8908 00	12-14
A0VD 8914 01	12-12
A0VD 8924 00	13-9
A0VD 8941 00	12-23
A0VD 9005 03	12-13
A0VD 9006 00	12-15
A0VD 9014 01	13-15
A0VD 9041 00	21-7
A0VD 9042 00	21-8
A0VD 9055 03	12-13
A0VD 9071 00	12-16
A0VD 9073 00	13-14
A0VD 9081 01	13-10
A0VD 9082 00	13-6
A0VD 9083 00	13-5
A0VD 9401 02	1-13
A0VD 9402 01	1-13

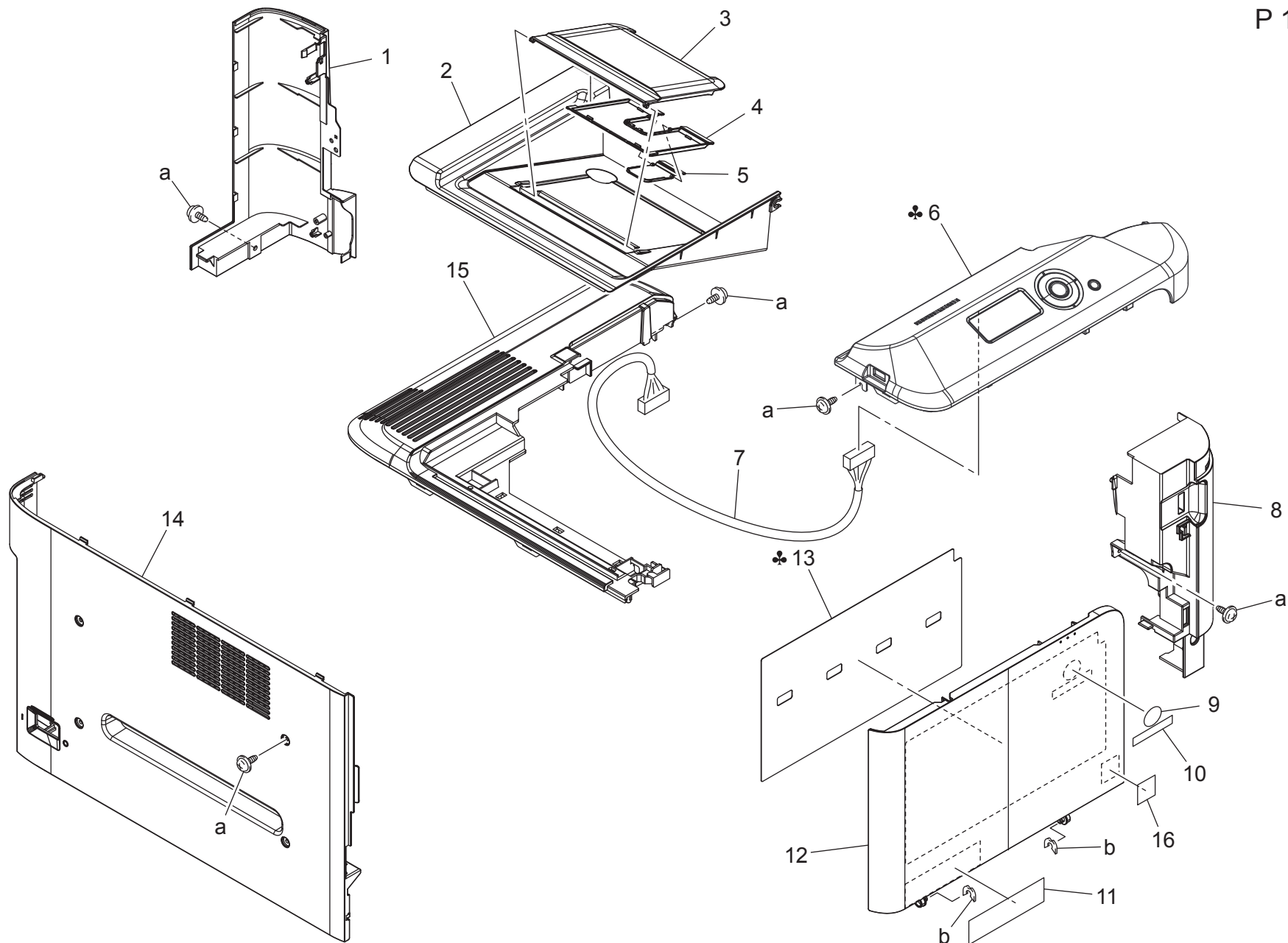
Parts No.	Page No.
A0VD 9403 01	1-13
A0VD 9404 00	1-13
A0VD 9405 00	1-13
A0VD 9411 00	1-11
A0VD 9413 00	1-11
A0VD 9416 00	1-10
A0VD 9483 01	13-7
A0VD 9491 00	13-8
A0VD H001 1F	18-7
A0VD H010 07	18-5
A0VD H011 06	18-5
A0VD M100 00	14-1
A0VD M101 00	16-1
A0VD M102 00	15-1
A0VD M102 00	16-1
A0VD M200 00	3-7
A0VD M200 00	12-8
A0VD M202 01	11-2
A0VD M400 02	2-13
A0VD M401 03	2-13
A0VD M404 02	6-1
A0VD M500 00	5-3
A0VD M501 00	5-9
A0VD M502 00	2-11
A0VD N100 01	18-12
A0VD N102 00	20-2
A0VD N103 01	19-1
A0VD N105 00	20-1
A0VD N106 00	14-2
A0VD N10A 00	4-12
A0VD N10C 00	5-8
A0VD N10D 00	5-5
A0VD N10E 01	17-9
A0VD N10F 00	18-11
A0VD N10H 00	19-2
A0VD N10P 00	7-1
A0VD N10S 01	7-2
A0VD N10T 01	18-4
A0VD N10X 01	18-13
A0VD N111 01	6-2

Parts No.	Page No.
A0VD N112 00	2-12
A0VD N120 00	1-7
A0VD N121 00	3-10
A0VD N300 00	18-1
A0VD N301 00	18-1
A0VD N302 00	18-1
A0VD R700 11	17-1
A0VD R701 11	17-1
A0VD R706 00	3-6
A0VD R708 00	8-11
A0VD R709 00	9-15
A0VD R710 00	9-15
A0VD R713 00	9-4
A0VD R716 00	9-1
A0VD R717 00	11-1
A0VD R718 00	12-17
A0VD R719 00	1-6
A0VD R722 00	1-6
A0VD R900 00	18-5
A0VD R901 00	18-5
A0VD R902 00	18-5
A108 M501 00	2-6
A108 M501 00	3-4
A108 M501 00	5-13
A108 M501 00	9-11
A108 M501 00	10-1
A108 M501 00	11-26
A108 M501 00	17-6
A108 R900 00	2-19
A121 1026 00	2-16
A148 001	13-16
A148 011	13-16
A148 021	13-16
A148 0Y1	4-5
A148 0Y2	10-4
A1AR R700 00	7-3
A1AU 001	7-19
A1AU 0Y1	7-19
V500 0100 03	21-1
V500 0100 05	21-2

Parts No.	Page No.
V500 0100 07	21-3
V500 0100 20	21-4
V501 0100 01	21-6
V501 0100 18	21-5

EXTERNAL PARTS

P 1



magicolor 4750DN/magicolor 4750EN

EXTERNAL PARTS

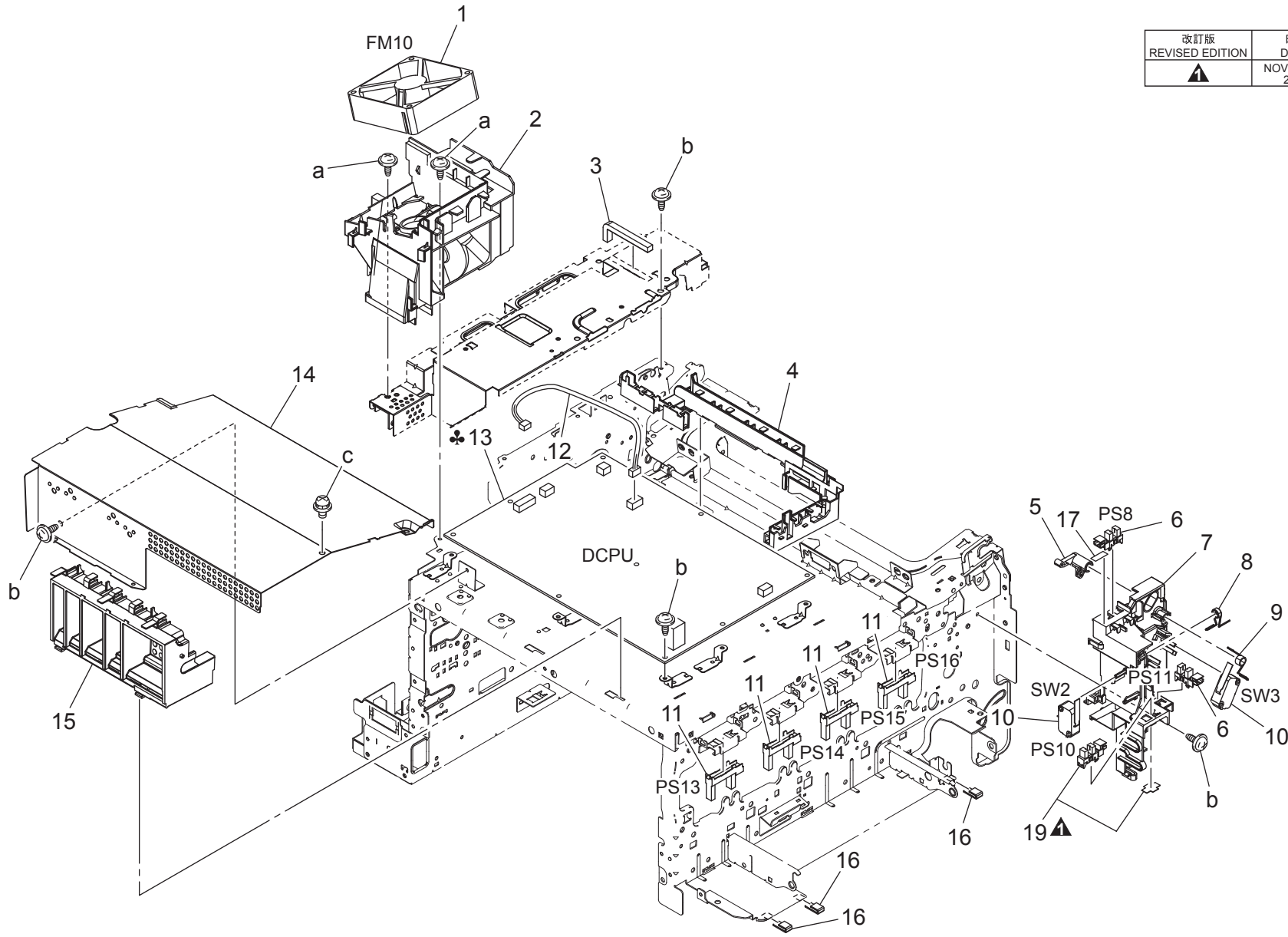
Key	Part No.	Description	Destinations	Class	QTY	Standard parts
1	A0VD 1603 02	Cover /Right rear		D	1	a-V137 0308 03 b-V218 0400 86
2	A0VD 1601 00	Cover /Upper		D	1	
3	A0VD 1612 01	Tray		C	1	
4	A0VD 1618 02	Tray		C	1	
5	A0VD 1620 00	Tray		C	1	
6	A0VD R719 00	Control Panel Assy	A,A1	I	1	
6	A0VD R722 00	Control Panel Assy	B,C,D1,D3,E,F1,F2,G 1,G2,H,I,J,K	I	1	
7	A0VD N120 00	Operation Wiring		D	1	
8	A0VD 1605 02	Cover /Right front		D	1	
9	4030 7500 01	LABEL LOGO MARK		C	1	
10	A0VD 9416 00	Label Logo Mark		C	1	
11	A0VD 9411 00	Label magicolor 4750EN	{magicolor4750EN}	C	1	
11	A0VD 9413 00	Label magicolor 4750DN	{magicolor4750DN}	C	1	
12	A0VD 1604 05	Cover /Front		C	1	
13	A0VD 9401 02	Sheet	A,A1	C	1	
13	A0VD 9402 01	Sheet		C	1	
13	A0VD 9403 01	Sheet	B,F1,G2,H	C	1	
13	A0VD 9404 00	Sheet	C,G1	C	1	
13	A0VD 9405 00	Sheet	D1,D3,E,F2,I,K	C	1	
14	A0VD 1602 01	Cover /Left	J	C	1	
15	A0VD 1607 00	Cover /Upper		D	1	
16	A011 9462 00	Label Emperon		D	1	

magicolor 4750DN/magicolor 4750EN

POWER SUPPLY SECTION

P 2

改訂版 REVISED EDITION	日付 DATE
	NOVEMBER 2010



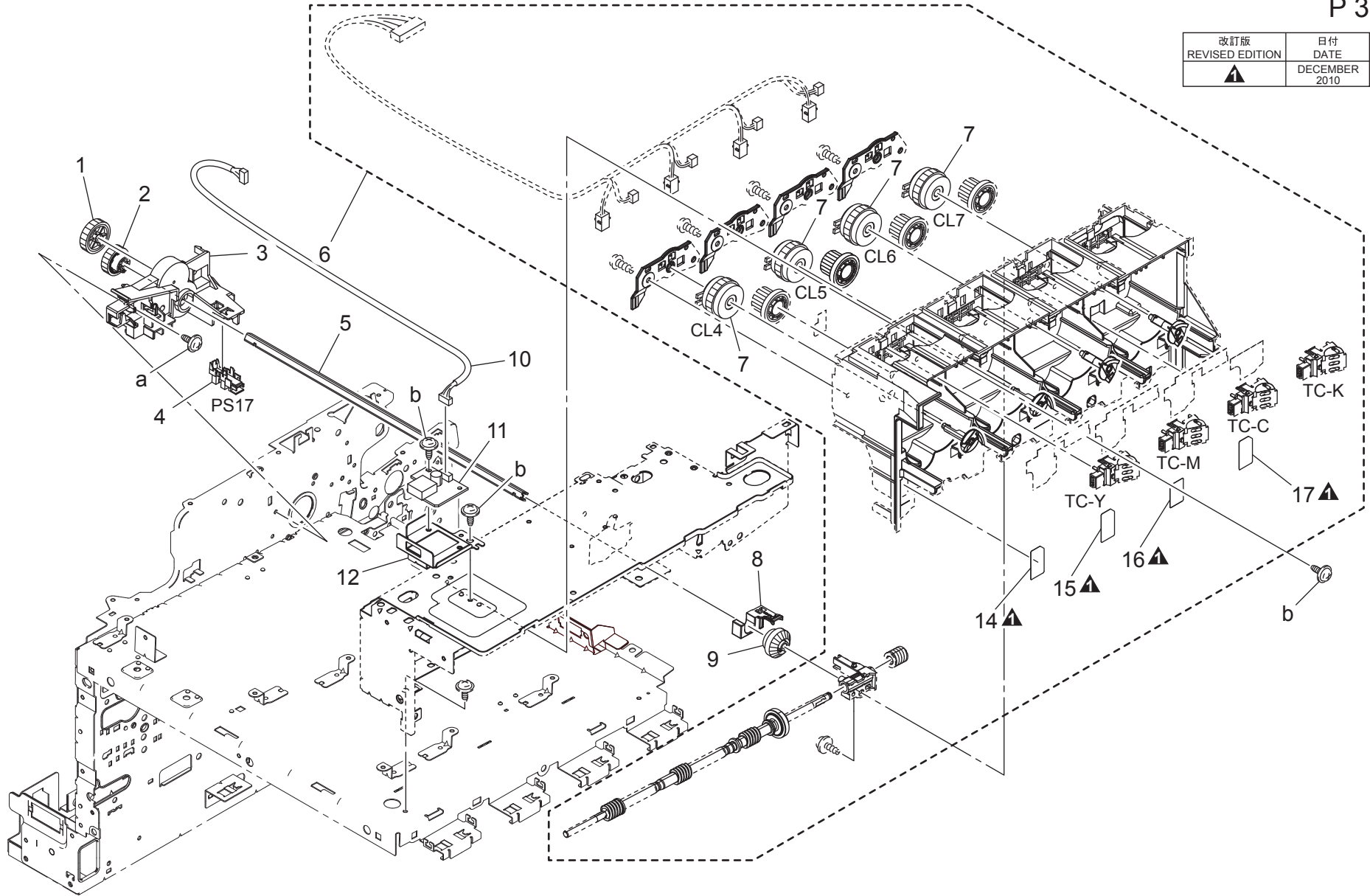
magicolor 4750DN/magicolor 4750EN

POWER SUPPLY SECTION

Key	Part No.	Description	Destinations	Class	QTY	Standard parts
1	4139 M100 00	FAN MOTOR		B	1	a-V144 0306 03 b-V137 0306 03 c-V116 0306 03
2	A0VD 1022 02	Cooling Duct		D	1	
3	A0VD 1372 00	Seal		D	1	
4	A0VD 1041 02	Protection Cover		D	1	
5	A0VD 1355 00	Detecting Part		C	1	
6	A108 M501 00	Photointerrupter		B	2	
7	A0VD 1353 03	Hold Holder		D	1	
8	A0VD 1352 01	Adjusting Spring		D	1	
9	A0VD 1354 02	Torsion Coil spring		D	1	
10	9J06 M601 00	MICRO SWITCH		C	2	
11	A0VD M502 00	Photointerrupter		I	4	
12	A0VD N112 00	Power supply Wiring /2		D	1	
13	A0VD M400 02	Power supply	A,A1,B,F1,G2,H C,D1,D3,E,F2,I,J,K, G1	I	1	
13	A0VD M401 03	Power supply		I	1	
14	A0VD 1331 02	Shield Frame		D	1	
15	A0VD 1023 01	Duct		D	1	
16	A121 1026 00	Seal		D	3	
17	A0VD 1397 00	Seal		D	1	
19	A108 R900 00	PHOTO INTERRUPTER		I	1	

TONER BOTTLE DRIVE SECTION

改訂版 REVISED EDITION	日付 DATE
▲	DECEMBER 2010



magicolor 4750DN/magicolor 4750EN

TONER BOTTLE DRIVE SECTION

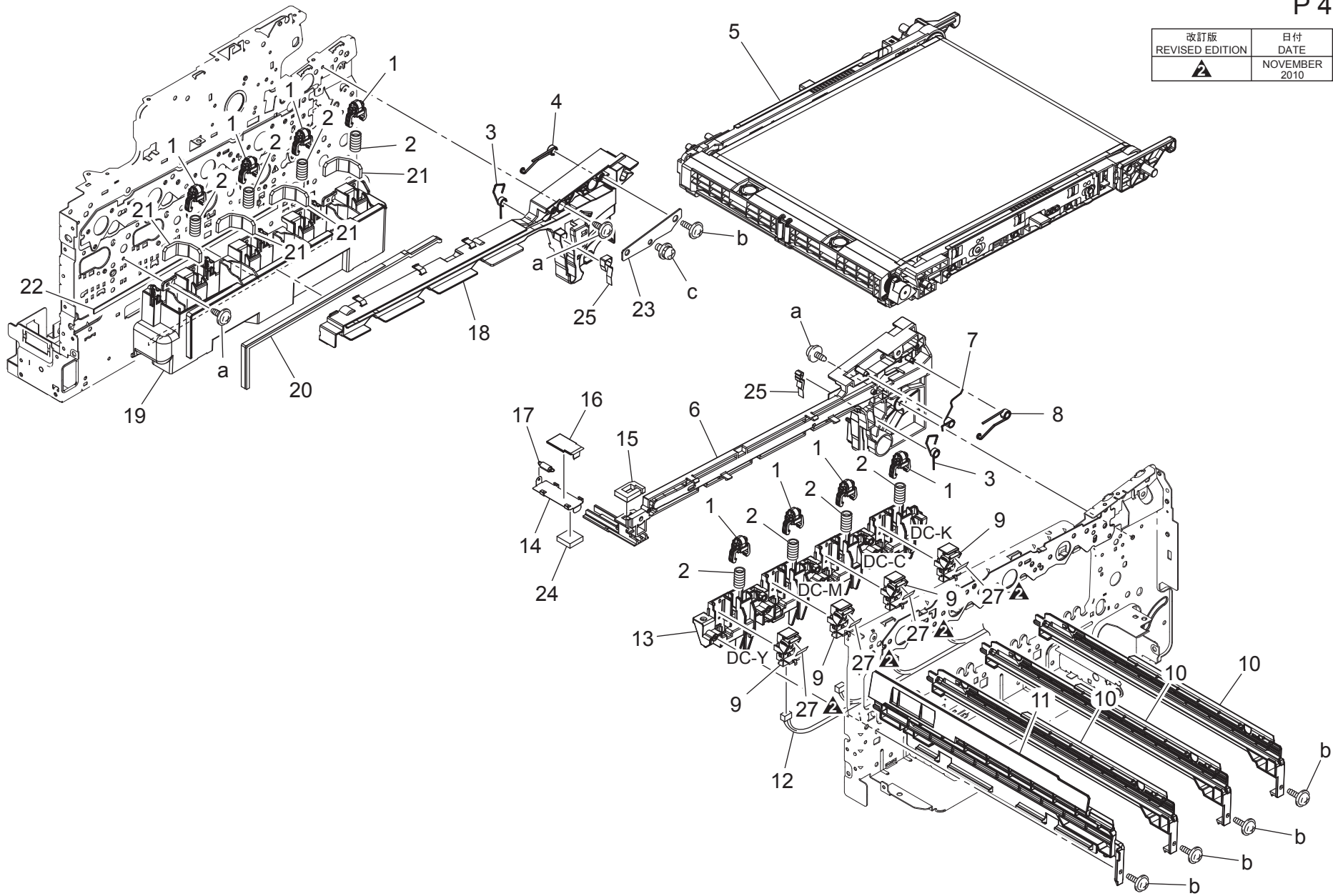
Key	Part No.	Description	Destinations	Class	QTY	Standard parts
1	A0VD 2364 00	Gear 29T		D	1	a-V137 0308 03 b-V137 0306 03
2	A0VD 2366 01	Gear 25T		D	1	
3	A0VD 2369 02	Drive Holder		D	1	
4	A108 M501 00	Photointerrupter		B	1	
5	A0VD 2365 00	Shaft		D	1	
6	A0VD R706 00	Toner bottle Drive Assy		C	1	
7	A0VD M200 00	Clutch		C	4	
8	A0VD 2374 00	Stopper		D	1	
9	A0VD 2378 00	Gear 20T		D	1	
10	A0VD N121 00	Relay harness		D	1	
11	4139 6056 03	PWB ASSY		C	1	
12	A0VD 1617 00	Mounting Plate		D	1	
14	A0VD 4910 00	Label		C	1	
15	A0VD 4911 00	Label		C	1	
16	A0VD 4912 00	Label		C	1	
17	A0VD 4913 00	Label		C	1	

magicolor 4750DN/magicolor 4750EN

TRANSFER BELT UNIT

P 4

改訂版 REVISED EDITION	日付 DATE
	NOVEMBER 2010

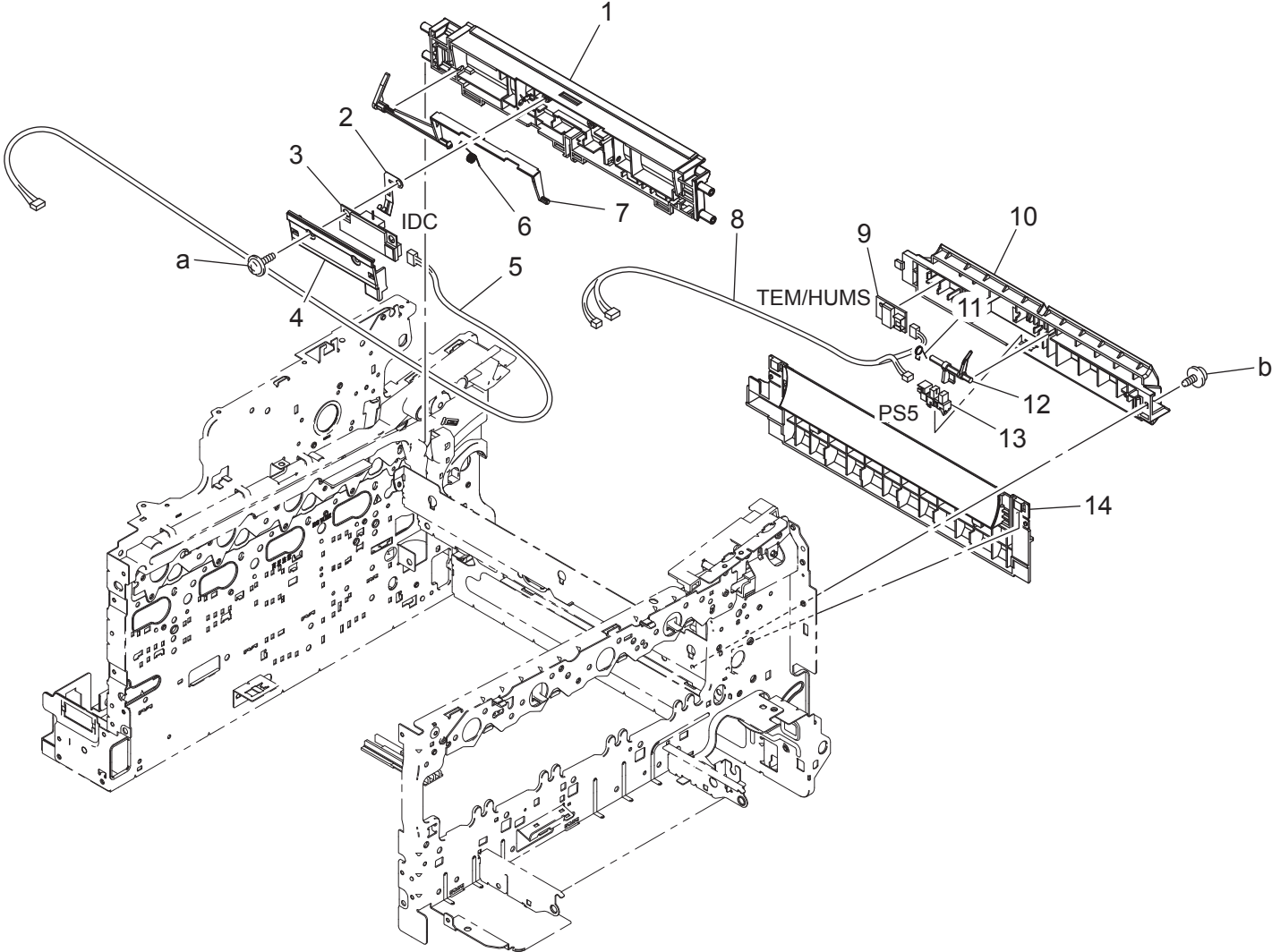


magicolor 4750DN/magicolor 4750EN

TRANSFER BELT UNIT

Key	Part No.	Description	Destinations	Class	QTY	Standard parts
1	A0VD 1117 00	Holder	ホルダ	D	8	a-V137 0308 03 b-V153 0308 03 c-V116 0306 03
2	A0VD 1116 00	Compressing Coil spring	圧縮コイルばね	D	8	
3	A0VD 1141 01	Torsion Coil spring	ねじりコイルばね (転写上ガイド)	D	2	
4	A0VD 1105 00	Torsion Coil spring /Rear	ねじりコイルばね/後	D	1	
5	A148 0Y1	Transfer Unit	中間転写 ASSY	A	1	
6	A0VD 1101 04	Rail /Front	レール/前	D	1	
7	A0VD 1368 00	Contact	接点 (アース定着)	D	1	
8	A0VD 1104 00	Torsion Coil spring /Front	ねじりコイルばね/前	D	1	
9	A0VD 1341 00	Hold Holder /ASSY	保持ホルダ/ ASSY (PU)	D	4	
10	A0VD 1111 02	Rail	レール (PU)	D	3	
11	A0VD 1112 03	Rail	レール (PU L)	D	1	
12	A0VD N10A 00	Photoconductor Wiring /1	感光体束線/1 (PU用CSIC)	D	1	
13	A0VD 1114 02	Holder /Front	ホルダ/前	D	1	
14	A0VD 3623 00	Shutter	シャッター (中継)	D	1	
15	A0VD 3622 01	Seal	シール (転写ジョイント)	D	1	
16	A0VD 3624 00	Seal	シール (中継)	D	1	
17	A0VD 3625 00	Pulling Coil spring	引張りコイルばね (中継)	D	1	
18	A0VD 1102 05	Rail /Rear	レール/後	D	1	
19	A0VD 1115 02	Duct	ダクト	D	1	
20	A0VD 1151 00	Seal	シール	D	1	
21	A0VD 1153 01	Seal	シール (吸引口)	D	4	
22	A0VD 1152 00	Seal	シール (ダクト裏)	D	1	
23	A0VD 2147 00	Mounting Plate	取付板	D	1	
24	A0VD 3637 00	Seal	シール (シャッター外)	D	1	
25	A0VD 1154 00	Seal	シール (ホルダ)	D	2	
27	A0VD 1343 00	Protection Seal	保護シール	D	4	

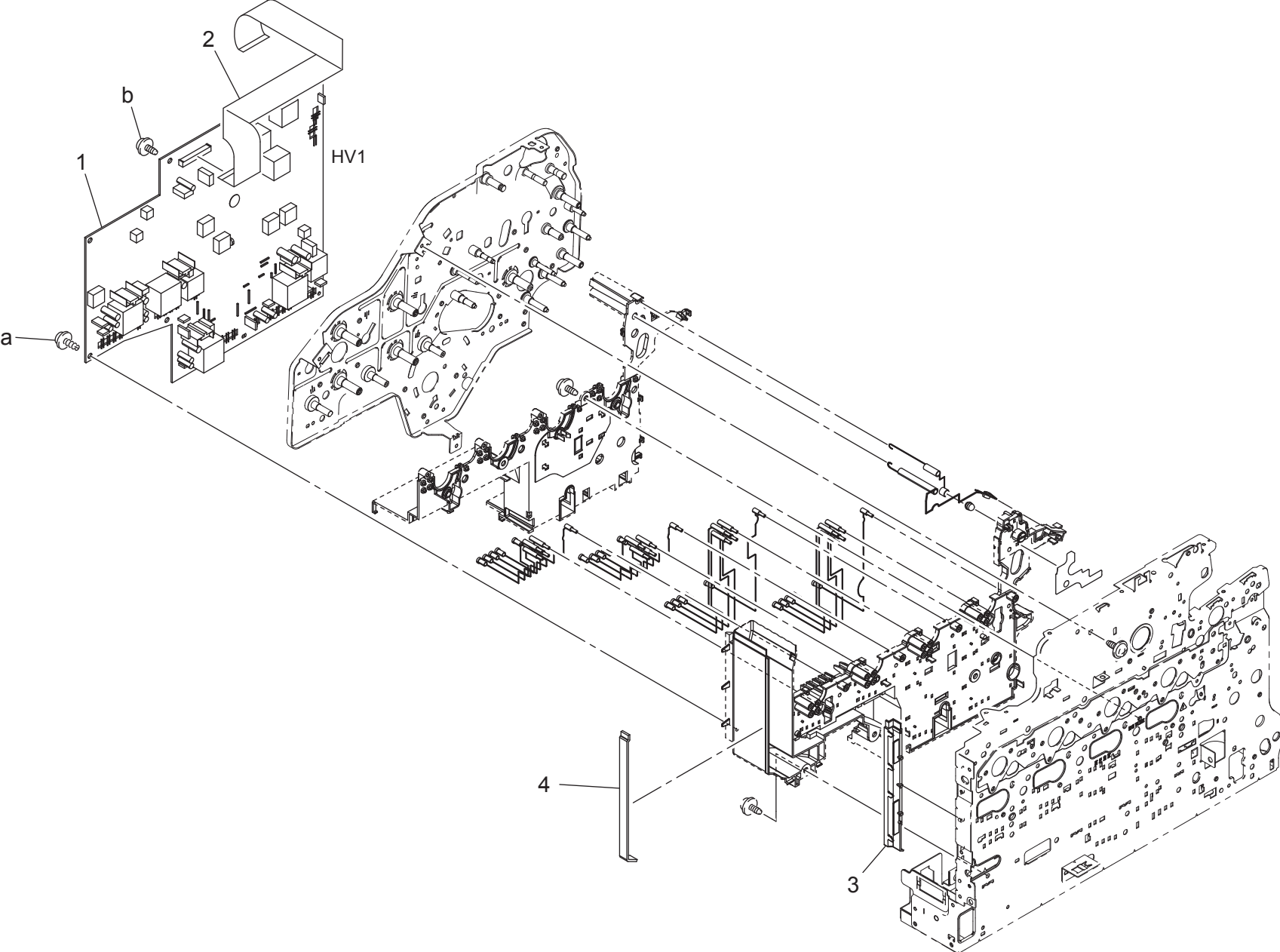
magicolor 4750DN/magicolor 4750EN



Key	Part No.	Description	Destinations	Class	QTY	Standard parts
1	A0VD 7064 00	Guide		D	1	a-V153 0312 03 b-V144 0306 03
2	A0VD 7063 00	Contact		D	1	
3	A0VD M500 00	Photo sensing		I	1	
4	A0VD 7065 00	Holder		D	1	
5	A0VD N10D 00	Sensor Wiring /3		D	1	
6	A0VD 7062 01	Torsion Coil spring		D	1	
7	A0VD 7061 01	Cover		D	1	
8	A0VD N10C 00	Sensor Wiring /2		D	1	
9	A0VD M501 00	Humidity sensor		I	1	
10	A0VD 7073 03	Guide		D	1	
11	A0VD 7072 00	Torsion Coil spring		D	1	
12	A0VD 7071 01	Actuator		C	1	
13	A108 M501 00	Photointerrupter		B	1	
14	A0VD 7075 01	Guide		D	1	

magicolor 4750DN/magicolor 4750EN

HIGH VOLTAGE SECTION

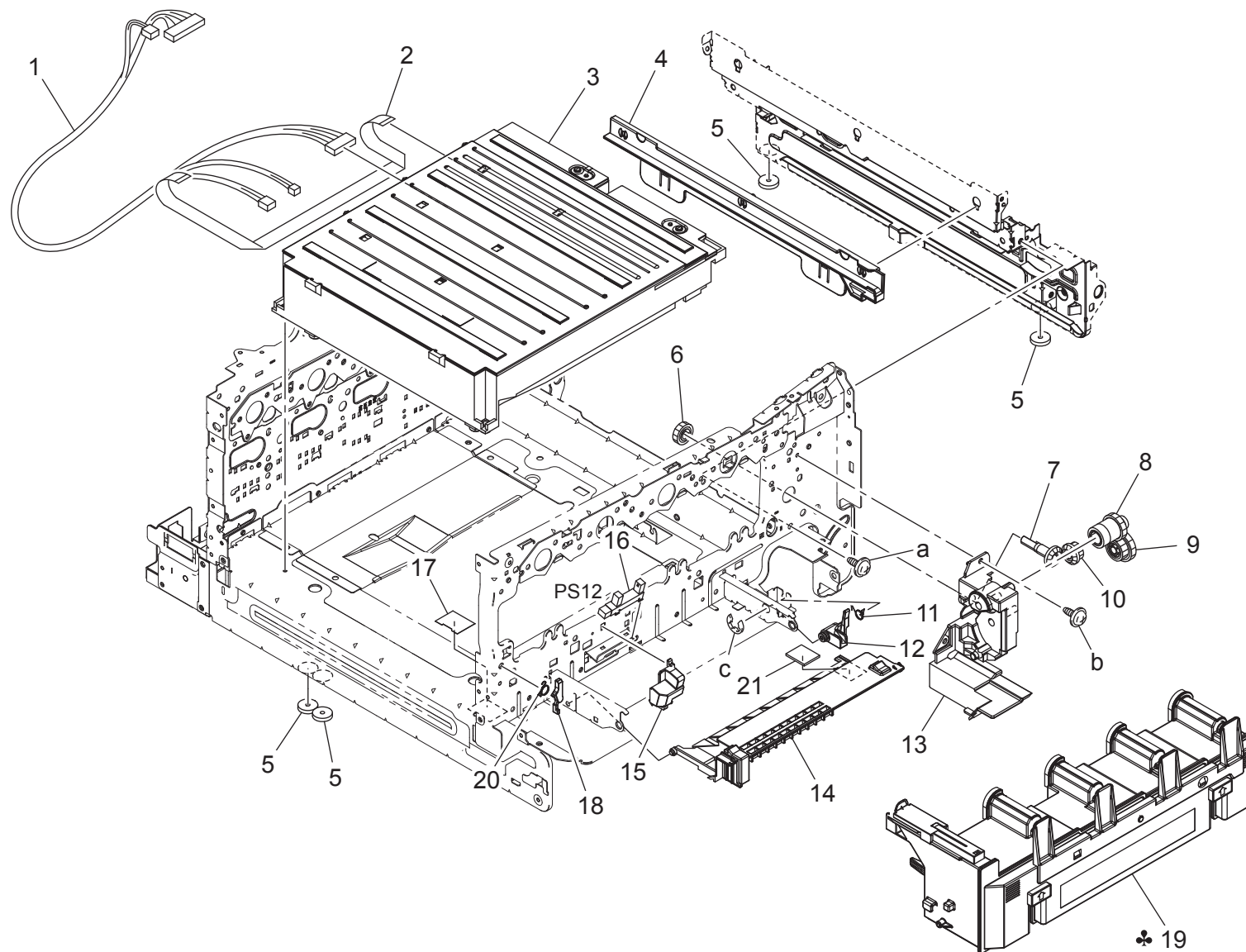


HIGH VOLTAGE SECTION

Key	Part No.	Description	Destinations	Class	QTY	Standard parts
1	A0VD M404 02	High voltage unit		I	1	a-V149 0310 03 b-V137 0306 03
2	A0VD N111 01	HV Flatcable		D	1	
3	A0VD 1394 01	Duct /2		D	1	
4	A0VD 1395 00	Seal		D	1	

PRINT HEAD SECTION

P 7



magicolor 4750DN/magicolor 4750EN

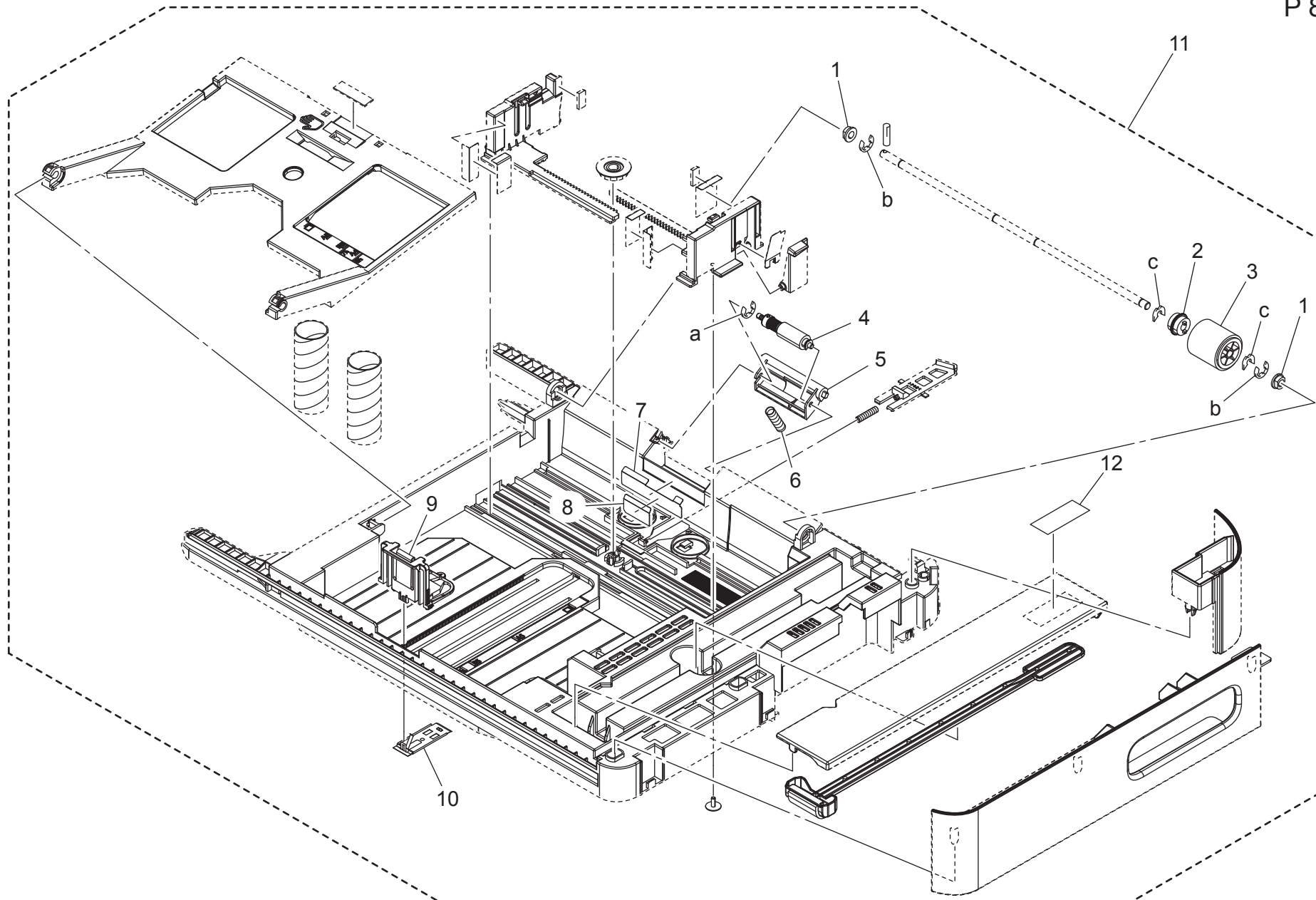
PRINT HEAD SECTION

Key	Part No.	Description	Destinations	Class	QTY	Standard parts
1	A0VD N10P 00	LD Wiring /1		D	1	a-V144 0306 03 b-V144 0308 03 c-V217 0600 01
2	A0VD N10S 01	LD Flatcable /1		D	1	
3	A1AR R700 00	Print Head Assy		I	1	
4	A0VD 1113 02	Rail		D	1	
5	A0VD 1013 01	Installing Rubber foot		C	4	
6	A0VD 2357 00	Gear 16T		C	1	
7	A0VD 2354 00	Gear 16T		D	1	
8	A0VD 2356 00	Gear 16/26T		D	1	
9	A0VD 2359 00	Gear 22/30T		D	1	
10	A0VD 2355 00	Gear 16/16T		D	1	
11	A0VD 3627 02	Torsion Coil spring		D	1	
12	A0VD 3626 02	Lever		D	1	
13	A0VD 2351 01	Drive Holder		D	1	
14	A0VD 1087 03	Cover		D	1	
15	A0VD 1367 01	Hold Holder		D	1	
16	9335 1400 51	SOLID STATE SWITCH		B	1	
17	A0VD 1094 00	Scatteringprevention Seal		D	1	
18	A0VD 1074 01	Stopper		D	1	
19	A1AU 001	Waste Toner Bottle	A,A1	A	1	
19	A1AU 0Y1	Waste Toner Bottle	B,C,D1,D3,E,F1,F2,G 1,G2,H,I,J,K	A	1	
20	A0VD 1075 00	Torsion Coil spring		D	1	
21	A0VD 1090 01	Spacer		C	1	

magicolor 4750DN/magicolor 4750EN

CASSETTE SECTION

P 8

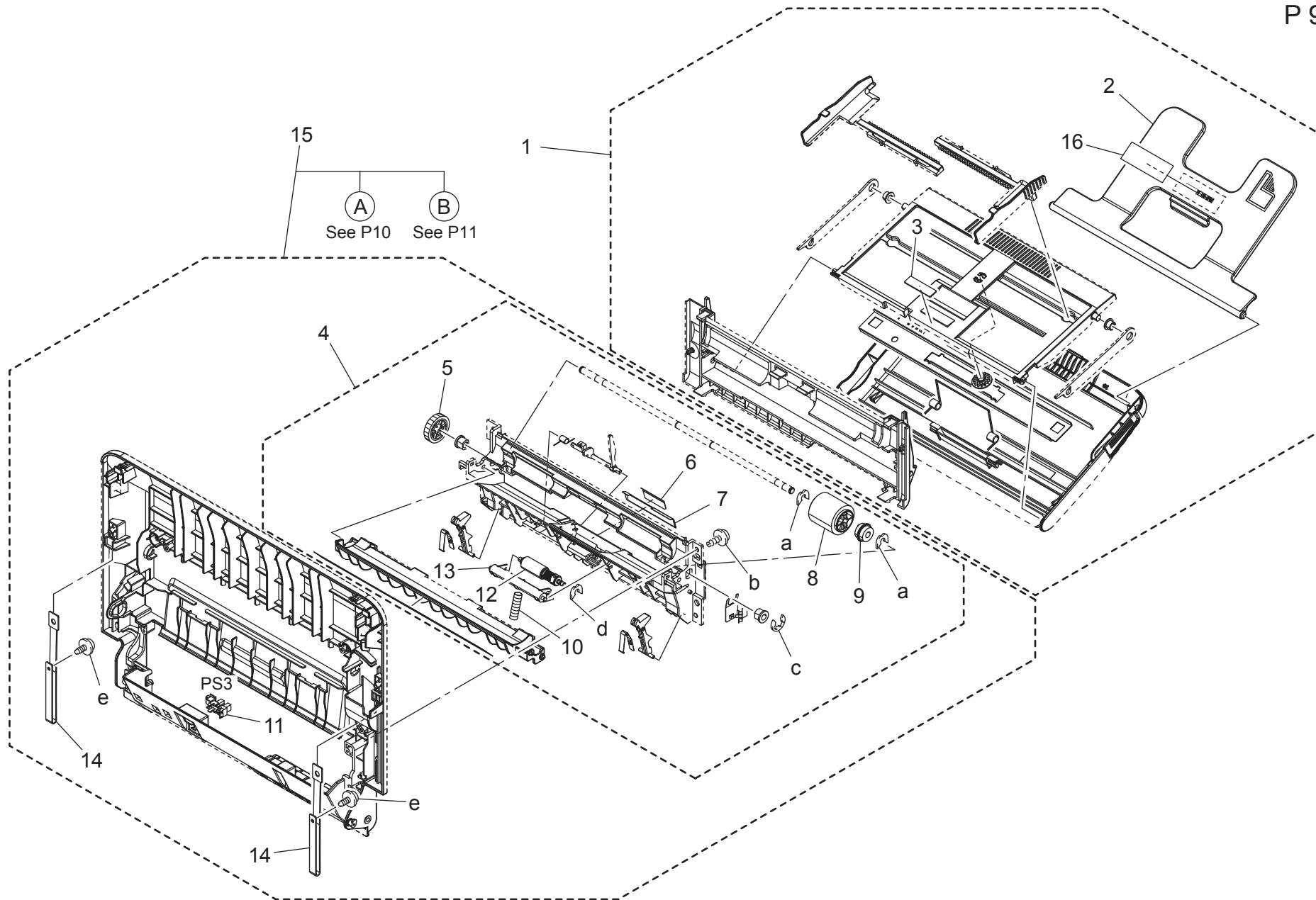


magicolor 4750DN/magicolor 4750EN

CASSETTE SECTION

Key	Part No.	Description	Destinations	Class	QTY	Standard parts
1	4131 3003 01	BUSHING 軸受		C	2	a-V217 0300 01 b-V217 0400 01 c-V218 0400 86
2	4030 3034 01	CLUTCH クラッチ		C	1	
3	4138 3032 02	ROLLER ローラ		B	1	
4	4658 0151 06	Roller Assy ローラ A S S Y		A	1	
5	A0VD 6211 00	Holder ホルダ		D	1	
6	A0VD 6248 00	Compressing Coil spring 圧縮コイルばね		C	1	
7	4131 3056 01	GUIDE PLATE ガイド板		C	1	
8	4131 3057 02	GUIDE ガイド		C	1	
9	A0VD 6231 01	Regulating Plate 規制板 (後端)		D	1	
10	A0VD 6232 00	Mounting Plate 取付板		D	1	
11	A0VD R708 00	Cassette Assy カセット A S S Y		D	1	
12	4138 7316 01	Label Prohibition inkjet media ラベル		D	1	

VERTICAL CONVEYANCE SECTION



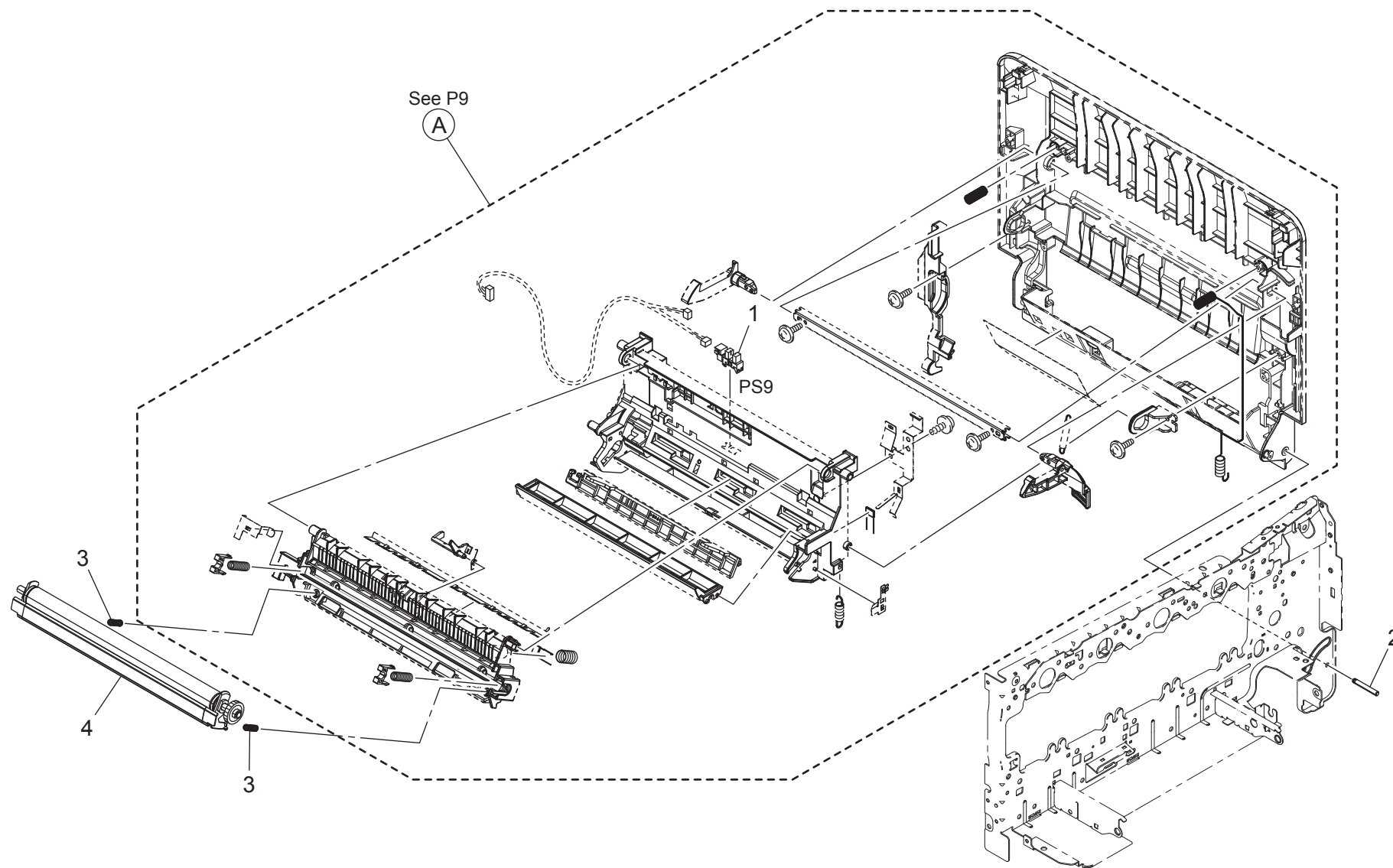
magicolor 4750DN/magicolor 4750EN

VERTICAL CONVEYANCE SECTION

Key	Part No.	Description	Destinations	Class	QTY	Standard parts
1	A0VD R716 00	Manual Feed Tray Unit		C	1	a-V218 0400 86 b-V153 0308 03 c-V217 0400 01 d-V218 0300 86 e-V137 0306 03
2	A0VD 5617 00	Tray		C	1	
3	4138 3255 01	FRICITION SHEET		C	1	
4	A0VD R713 00	Manual Paper Feed Assy		C	1	
5	A0VD 5613 01	Gear 20T		D	1	
6	A0VD 5618 00	Guide		C	1	
7	4131 3056 01	GUIDE PLATE		C	1	
8	4138 3032 02	ROLLER		B	1	
9	4030 3034 01	CLUTCH		C	1	
10	A0VD 6248 00	Compressing Coil spring		C	1	
11	A108 M501 00	Photointerrupter		B	1	
12	4658 0151 06	Roller Assy		A	1	
13	A0VD 6211 00	Holder		D	1	
14	A0VD 1623 00	Open/close Stopper		D	2	
15	A0VD R709 00	Vertical Conveyance Assy	{magicolor4750EN}	D	1	
16	A0VD R710 00	Vertical Conveyance Assy	{magicolor4750DN}	D	1	
	4138 7316 01	Label Prohibition inkjet media		D	1	

magicolor 4750DN/magicolor 4750EN

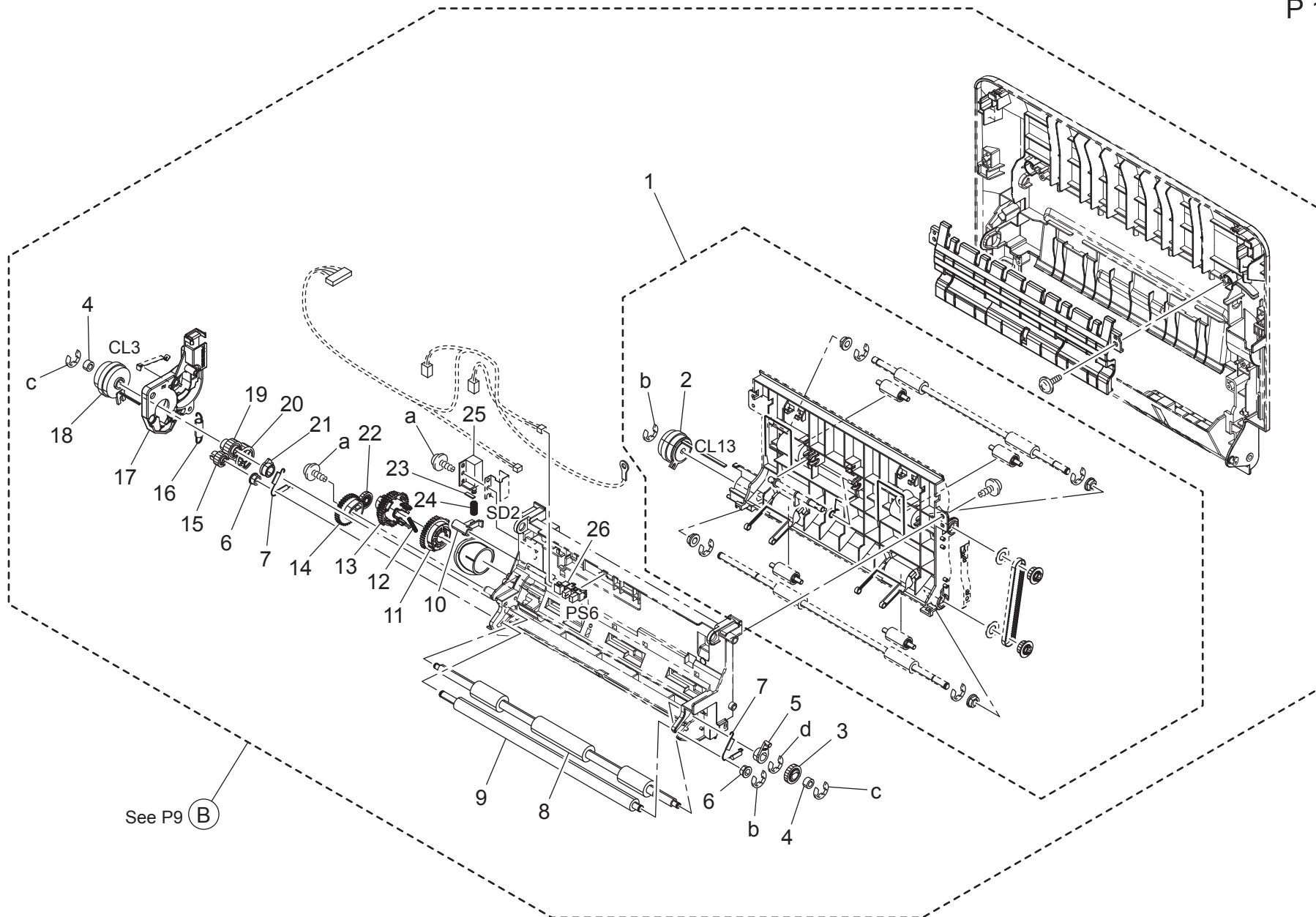
VERTICAL CONVEYANCE SECTION



magicolor 4750DN/magicolor 4750EN

Key	Part No.	Description	Destinations	Class	QTY	Standard parts	
1	A108 M501 00	Photointerrupter	{magicolor4750DN}	B	1		
2	A0VD 1621 01	Shaft		D	1		
3	A0VD 7017 00	Compressing Spring		C	2		
4	A148 0Y2	2nd Transfer Roller		A	1		

VERTICAL CONVEYANCE SECTION

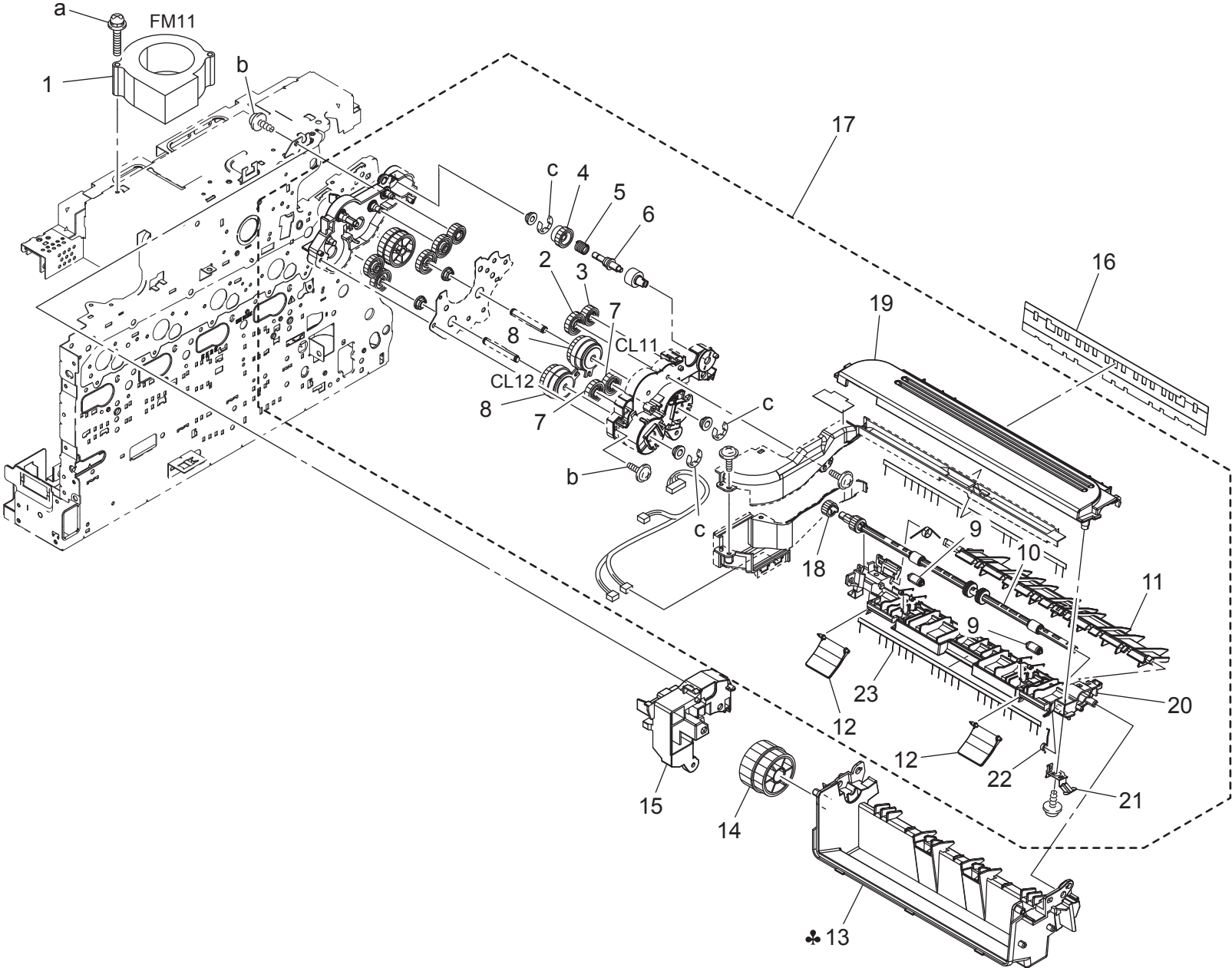


magicolor 4750DN/magicolor 4750EN

Key	Part No.	Description	Destinations	Class	QTY	Standard parts
1	A0VD R717 00	DUP Transport Assy	{magicolor4750DN}	C	1	a-V153 0308 03 b-V217 0400 01 c-V217 0300 01 d-V217 0600 01
2	A0VD M202 01	Clutch	{magicolor4750DN}	C	1	
3	A0VD 2353 01	Gear 16T		C	1	
4	4138 3528 02	ROLL		C	2	
5	A0VD 7023 00	Bushing		D	1	
6	4138 3532 02	BUSHING		C	2	
7	A0VD 7025 01	Pulling Coil spring		D	2	
8	A0VD 7021 01	Roller		D	1	
9	A0VD 7029 02	Roller		D	1	
10	A0VD 7047 00	Lever		D	1	
11	A0VD 7044 00	Gear 32T		D	1	
12	A034 5638 00	Compressing Spring		D	1	
13	A0VD 7043 00	Gear 35/42T		D	1	
14	A0VD 7051 01	Gear 35T		D	1	
15	A0VD 7030 01	Gear 15T		D	1	
16	A0VD 7037 00	Pulling Coil spring		D	1	
17	A0VD 7053 03	Mounting Plate		D	1	
18	A011 M200 00	CLUTCH		C	1	
19	A0VD 7035 01	Gear 20T		D	1	
20	A0VD 7049 00	Gear 28T		D	1	
21	A0VD 7024 00	Bushing		D	1	
22	A0VD 7052 00	Gear 18T		D	1	
23	A034 2140 00	Seal		D	1	
24	A034 2134 00	Compressing Spring		D	1	
25	A034 M200 00	Paperfeed Solenoid		C	1	
26	A108 M501 00	Photointerrupter		B	1	

magicolor 4750DN/magicolor 4750EN

DUP REVERSE DRIVE SECTION




magicolor 4750DN/magicolor 4750EN

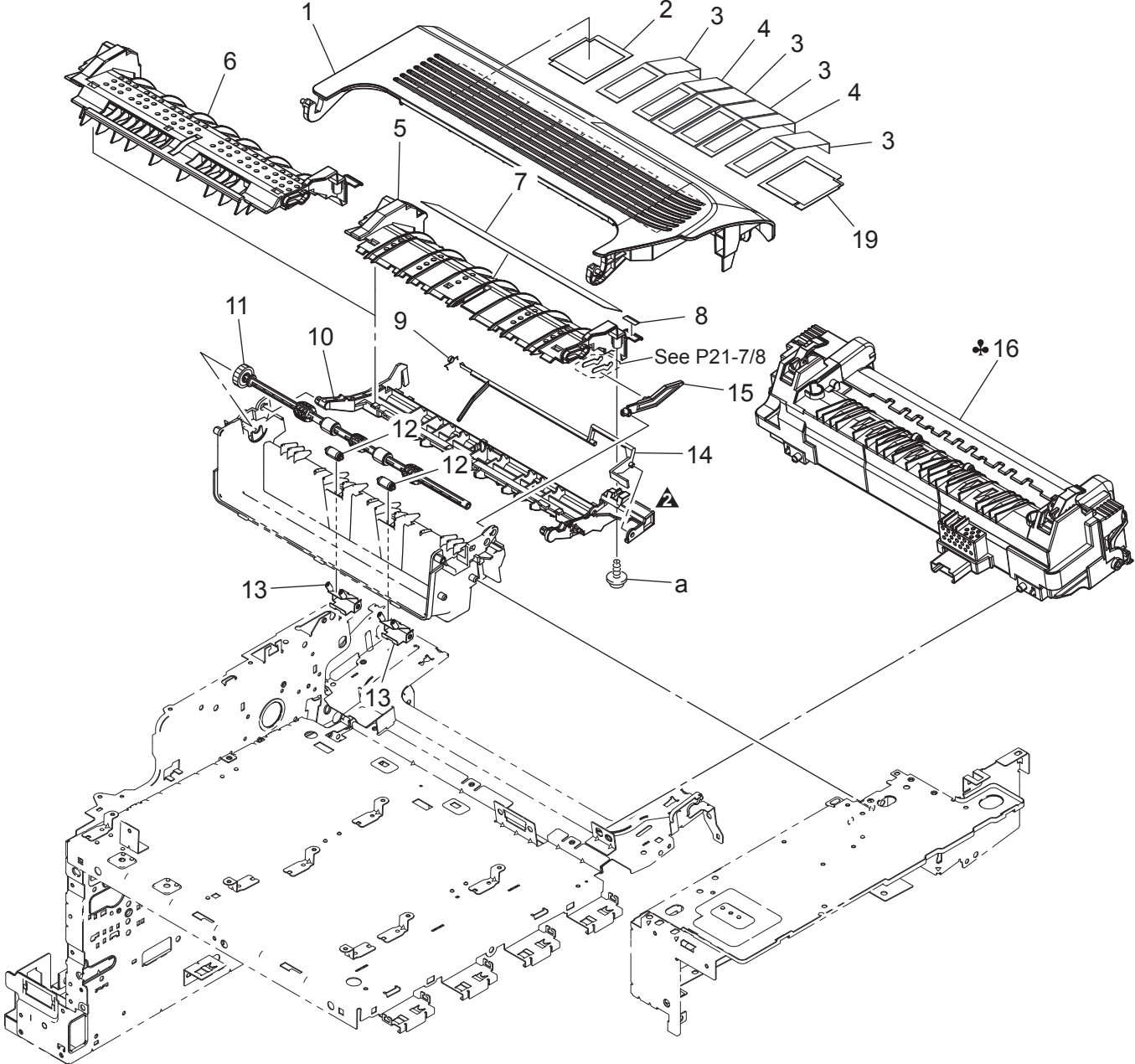
DUP REVERSE DRIVE SECTION

Key	Part No.	Description	Destinations	Class	QTY	Standard parts
1	9313 1300 51	FAN MOTOR	{magicolor4750DN}	B	1	a-V116 0335 03 b-V153 0308 03 c-V217 0400 01
2	A0VD 8228 00	Gear 23T	{magicolor4750DN}	D	1	
3	A0VD 8227 00	Gear 19T	{magicolor4750DN}	D	1	
4	A0VD 8231 00	Gear 20T	{magicolor4750DN}	D	1	
5	A0VD 8234 00	Torsion Coil spring	{magicolor4750DN}	D	1	
6	A0VD 8232 00	Shaft	{magicolor4750DN}	D	1	
7	A0VD 8224 00	Gear 18T	{magicolor4750DN}	D	2	
8	A0VD M200 00	Clutch	{magicolor4750DN}	C	2	
9	A0VD 8202 00	Roll	{magicolor4750DN}	C	2	
10	A0VD 8201 03	Reverse/exit Roller	{magicolor4750DN}	D	1	
11	A0VD 8256 00	Guide	{magicolor4750DN}	D	1	
12	A0VD 8914 01	Guide	{magicolor4750DN}	D	2	
13	A0VD 9005 03	Paper exit Holder	A,A1,B,F1,G2,H	D	1	
13	A0VD 9055 03	Paper exit Holder	C,D1,D3,E,F2,G2,I,J,K	D	1	
14	A0VD 8908 00	Gear 38/40T	{magicolor4750DN}	D	1	
15	A0VD 9006 00	Side plate	{magicolor4750EN}	D	1	
16	A0VD 9071 00	Seal	{magicolor4750EN}	D	1	
17	A0VD R718 00	DUP Reverse Drive Assy	{magicolor4750DN}	C	1	
18	A0VD 8211 00	Gear 14T	{magicolor4750DN}	D	1	
19	A0VD 8204 03	Guide /Upper	{magicolor4750DN}	D	1	
20	A0VD 8205 01	Guide /Lower		D	1	
21	A0VD 8209 00	Contact		D	1	
22	A0VD 8208 00	Torsion Coil spring		D	1	
23	A0VD 8941 00	Neutralizing Brush		D	1	

magicolor 4750DN/magicolor 4750EN

FUSING SECTION

改訂版 REVISED EDITION	日付 DATE
	NOVEMBER 2010



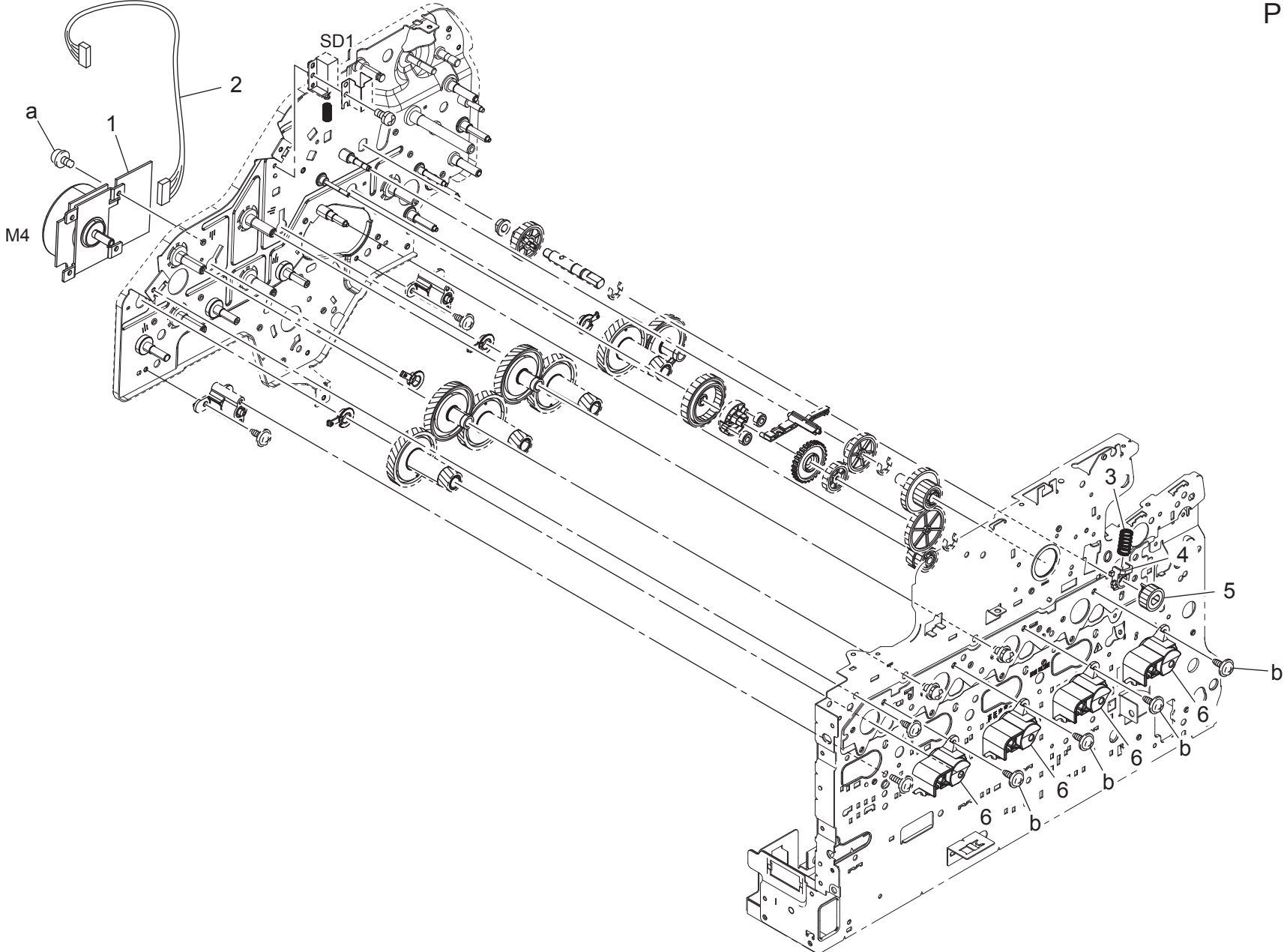
magicolor 4750DN/magicolor 4750EN

FUSING SECTION

Key	Part No.	Description	Destinations	Class	QTY	Standard parts
1	A0VD 1613 03	Cover		D	1	a-V153 0308 03
2	A0VD 1645 00	Filter		C	1	
3	A0VD 1642 02	Filter /B	{magicolor4750EN}	C	4	
4	A0VD 1641 02	Filter /A	{magicolor4750EN}	C	2	
5	A0VD 9083 00	Guide	{magicolor4750DN}	D	1	
6	A0VD 9082 00	Guide	{magicolor4750EN}	D	1	
7	A0VD 9483 01	Label Caution /JAM		D	1	
8	A0VD 9491 00	Label JAM		D	1	
9	A0VD 8924 00	Torsion Coil spring		D	1	
10	A0VD 9081 01	Guide		D	1	
11	A0VD 8901 02	Paper exit Roller		D	1	
12	A0VD 8903 01	Paper exit Roll		C	2	
13	A0VD 8902 00	Spring		D	2	
14	A0VD 9073 00	Actuator		D	1	
15	A0VD 9014 01	Lever		D	1	
16	A148 001	Fusing Unit 100V	A,A1	A	1	
16	A148 011	Fusing Unit 120V	B,F1,G2,H	A	1	
16	A148 021	Fusing Unit 230V	C,D1,D3,E,F2,G2,I,J,K	A	1	
19	A0VD 1644 00	Filter		C	1	

magicolor 4750DN/magicolor 4750EN

MAIN DRIVE SECTION

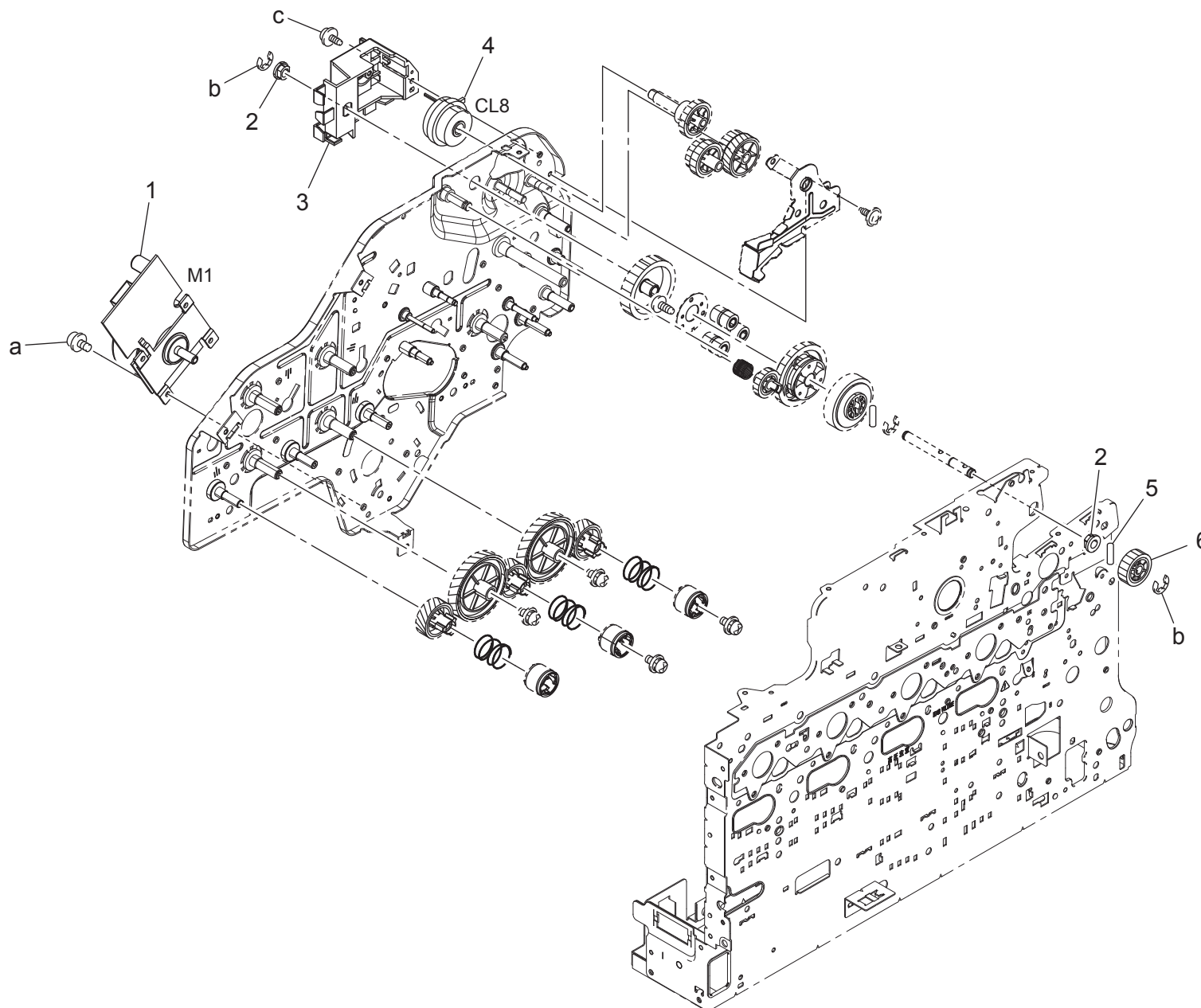


magicolor 4750DN/magicolor 4750EN

MAIN DRIVE SECTION

Key	Part No.	Description	Destinations	Class	QTY	Standard parts
1	A0VD M100 00	Brushless motor		C	1	a-V116 0305 03 b-V137 0308 03
2	A0VD N106 00	Drive Wiring /2		D	1	
3	A0VD 2203 00	Compressing Coil spring		D	1	
4	A0VD 2202 01	Bushing		D	1	
5	A0VD 2198 00	Gear 20T		C	1	
6	A0VD 2113 03	Hold Plate		D	4	

MAIN DRIVE SECTION



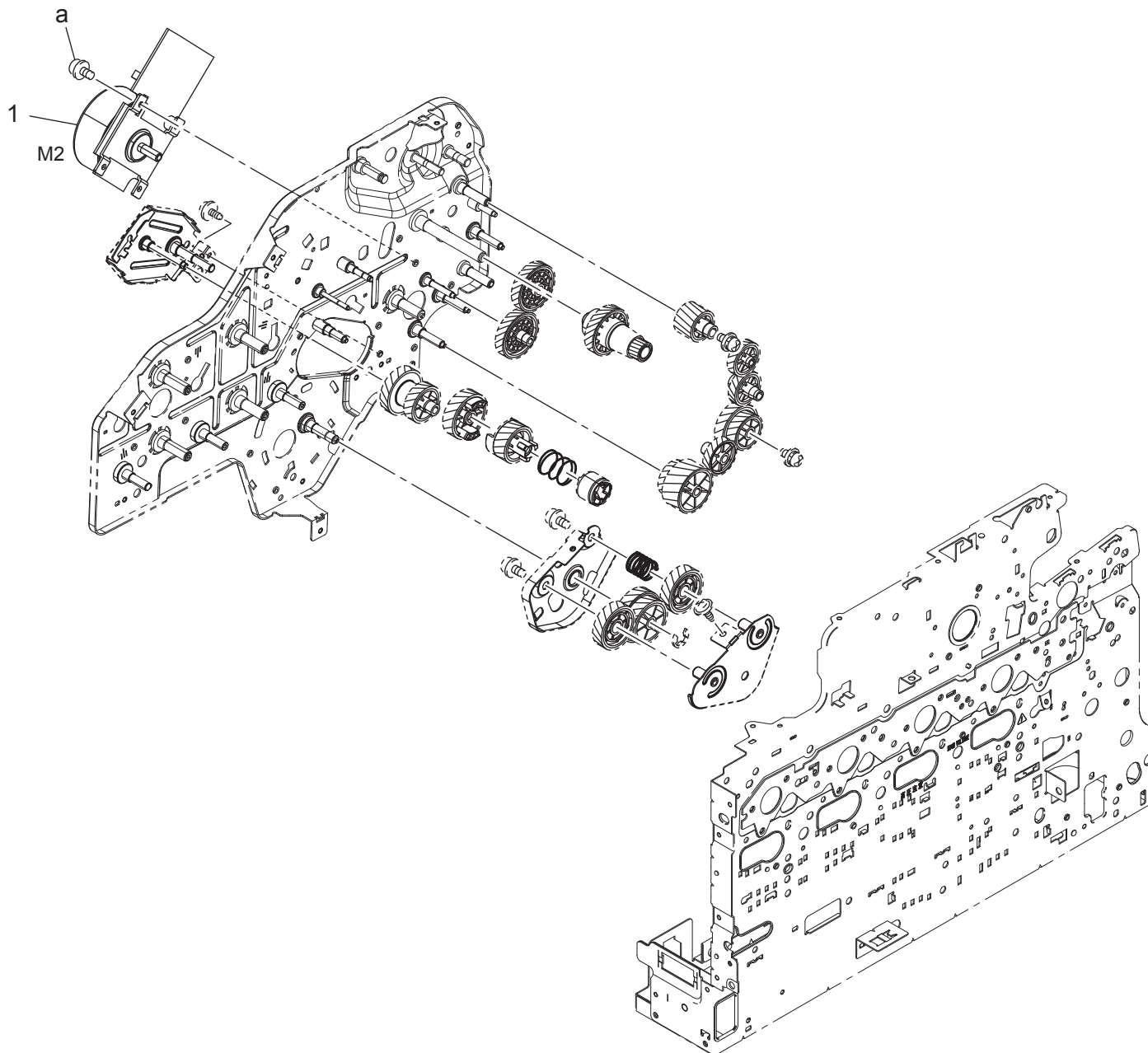
magicolor 4750DN/magicolor 4750EN

MAIN DRIVE SECTION

Key	Part No.	Description	Destinations	Class	QTY	Standard parts
1	A0VD M102 00	Brushless motor		C	1	a-V116 0305 03 b-V217 0400 01 c-V137 0308 03
2	A00F 2139 00	Bearing		C	2	
3	A0VD 2485 01	Mounting Plate /A		D	1	
4	A011 M200 00	CLUTCH		C	1	
5	4036 3014 01	PIN		C	1	
6	A0VD 2183 01	Gear 21T		C	1	

magicolor 4750DN/magicolor 4750EN

MAIN DRIVE SECTION

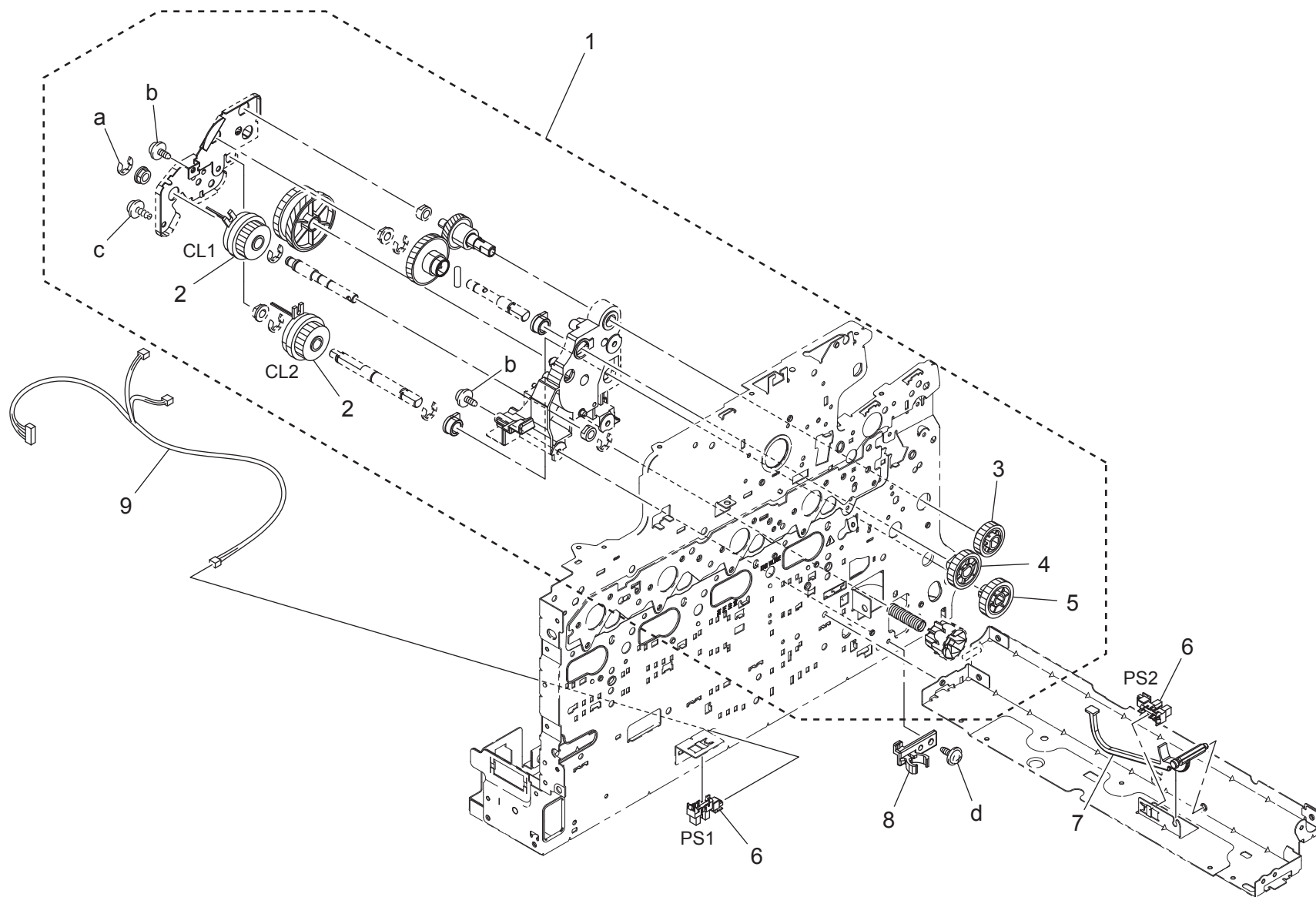


MAIN DRIVE SECTION

Key	Part No.	Description	Destinations	Class	QTY	Standard parts
1	A0VD M101 00	brushless Motor	{magicolor4750EN}	C	1	a-V116 0305 03
1	A0VD M102 00	Brushless motor	{magicolor4750DN}	C	1	

magicolor 4750DN/magicolor 4750EN

PAPER FEED DRIVE SECTION



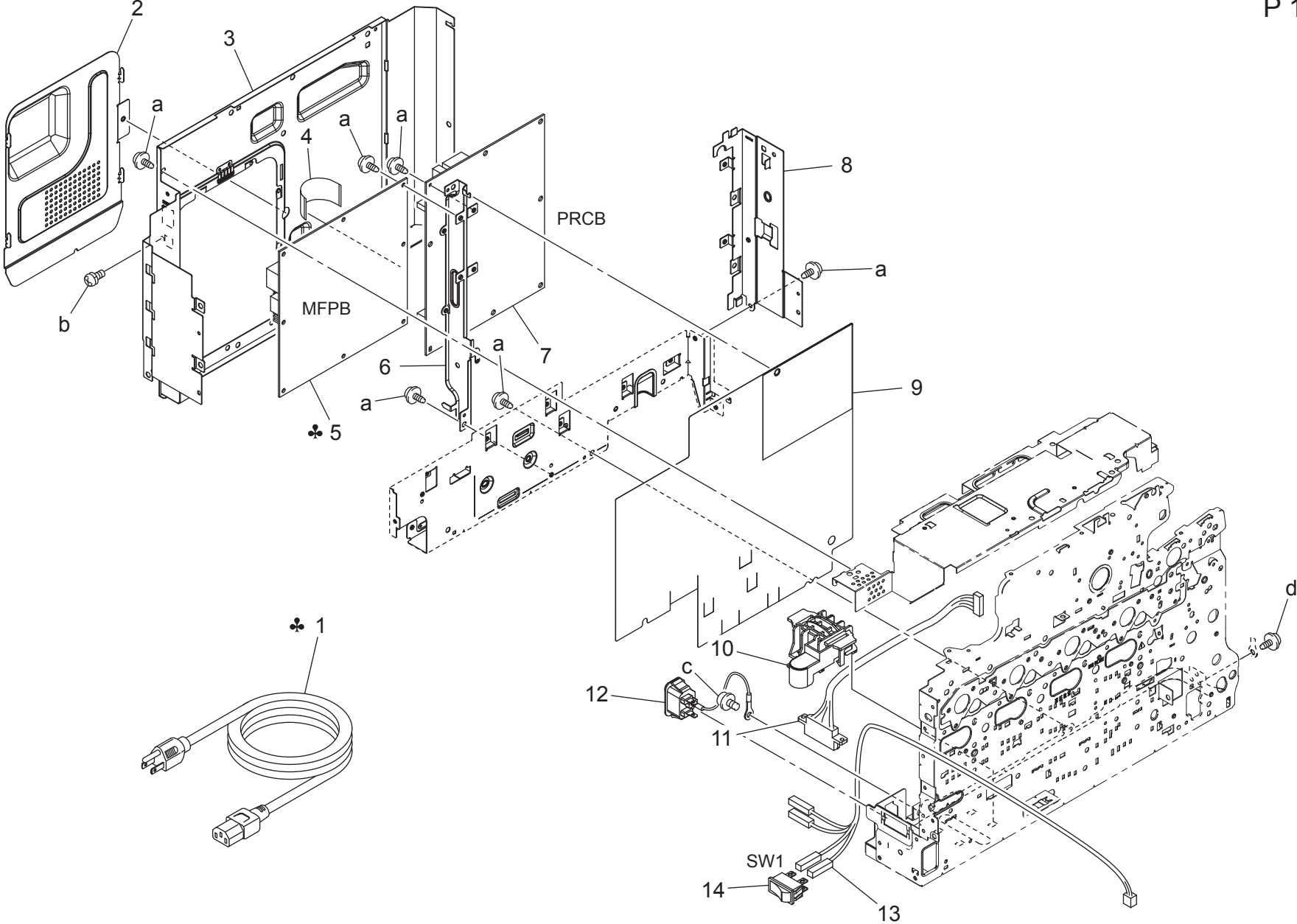
magicolor 4750DN/magicolor 4750EN

PAPER FEED DRIVE SECTION

Key	Part No.	Description	Destinations	Class	QTY	Standard parts
1	A0VD R700 11	Paper Feed Drive Assy	{magicolor4750EN}	C	1	a-V217 0400 01 b-V144 0308 03 c-V153 0308 03 d-V137 0306 03
1	A0VD R701 11	Paper Feed Drive Assy	{magicolor4750DN}	C	1	
2	A02E M200 00	Clutch		C	2	
3	A0VD 2312 00	Gear 22T		D	1	
4	A0VD 2309 01	Gear 25T	{magicolor4750DN}	C	1	
5	A0VD 2333 01	Gear 20T		C	1	
6	A108 M501 00	Photointerrupter		B	2	
7	A0VD 6241 00	Lever		C	1	
8	4002 3123 03	HOLDER		D	1	
9	A0VD N10E 01	Paperfeed Wiring /1	給紙束線 / 1 (P-給紙CL, カセット?)	D	1	

magicolor 4750DN/magicolor 4750EN

ELECTRICAL COMPONENTS

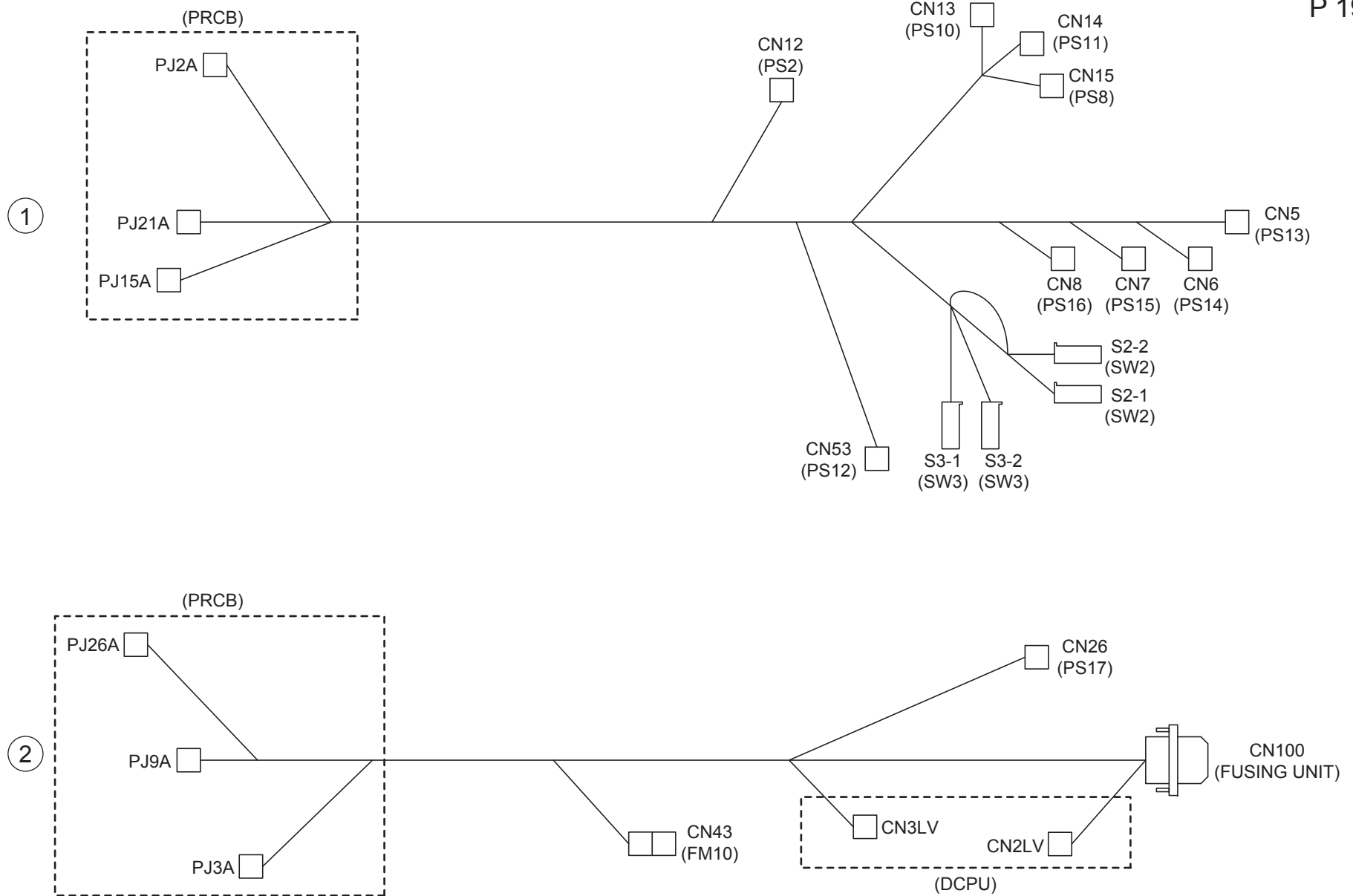


magicolor 4750DN/magicolor 4750EN

Key	Part No.	Description	Destinations	Class	QTY	Standard parts
1	A0VD N302 00	Power code	電源コード (国内)	A,A1	1	a-V137 0306 03 b-V115 0306 03 c-V116 0408 03 d-V144 0306 03
1	A0VD N301 00	Power code	電源コード (北米)	B,F1,G2,H	1	
1	A0VD N300 00	Power code	電源コード (欧州)	C,G1	1	
1	9381 4300 31	POWER CORD	プラグ付電源コード	J	1	
1	9381 4200 21	POWER CORD	プラグ付電源コード	D1,D3,E,F2,I	1	
1	4136 N300 00	POWER CODE	プラグ電源コード	K	1	
2	A0VD 1324 01	Cover	蓋	D	1	
3	A0VD 1334 01	Shield Frame	シールドフレーム ((CONT))	D	1	
4	A0VD N10T 01	Controller Flatcable /1	コントローラフラットケーブル/1 (P-	D	1	
5	A0VD H011 06	PWB Assembly (PS/PCL(JP))	コント基板 ASSY (PS / PCL (JP))	A,A1	1	
5	A0VD H010 07	PWB Assembly (mc/US)	コント基板 ASSY (mc / US)	B,F1,G2,H	1	
5	A0VD R900 00	PWB Assembly (mc/EU)	コント基板 ASSY (MC / EU)	C,G1	1	
5	A0VD R901 00	PWB Assembly (mc/AP)	コント基板 ASSY (MC / AP)	D1,D3,E,F2,I,K	1	
5	A0VD R902 00	PWB Assembly (mc/GC)	コント基板 ASSY (MC / GC)	J	1	
6	A0VD 1321 01	Separating Plate	分離板	D	1	
7	A0VD H001 1F	PWB-Assembly(PWB-A Assy)	基板 ASSY (PWB-A ASSY)	I	1	
8	A0VD 1328 02	Mounting Frame	取付フレーム (CONT 2)	D	1	
9	A0VD 1392 01	Insulating Sheet /2	絶縁シート/2	D	1	
10	A0VD 1361 00	Hold Holder	保持ホルダ (増設 CN)	D	1	
11	A0VD N10F 00	Paperfeed Wiring /2	給紙束線/2 (増設)	D	1	
12	A0VD N100 01	AC Wiring /1	AC 束線/1 (インレット)	D	1	
13	A0VD N10X 01	AC Wiring /3	AC 束線/3 (P-メインスイッチ)	D	1	
14	A034 M602 00	Rocker switch	波形スイッチ	C	1	

magicolor 4750DN/magicolor 4750EN

WIRING

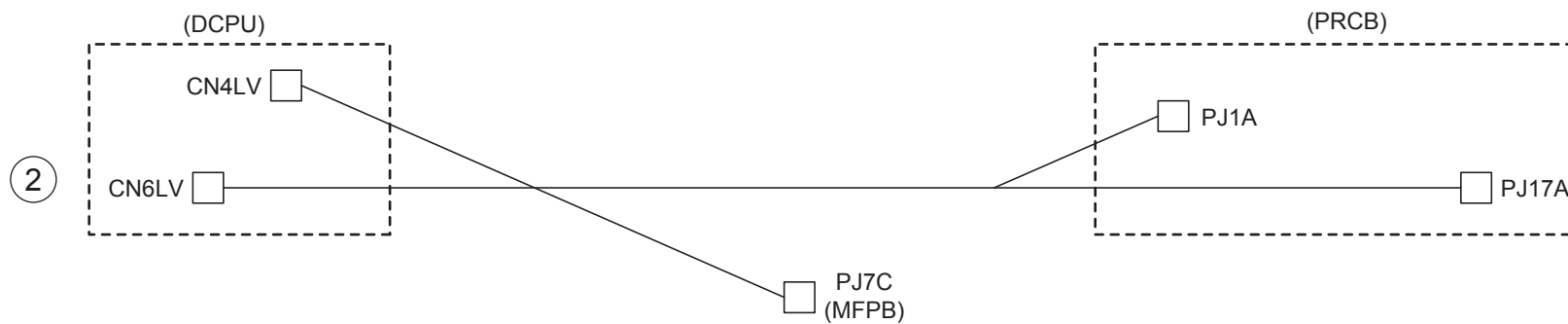
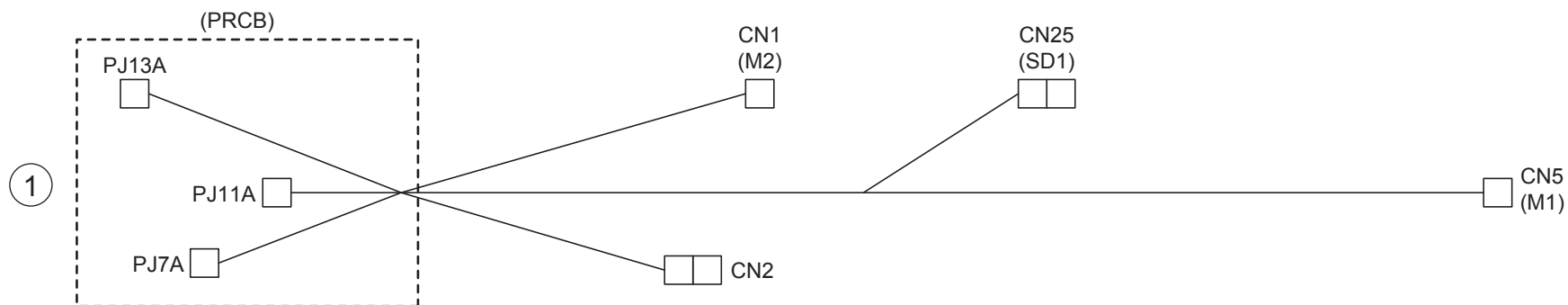


magicolor 4750DN/magicolor 4750EN

WIRING

Key	Part No.	Description	Destinations	Class	QTY	Standard parts
1	A0VD N103 01	Sensor Wiring /1		D	1	
2	A0VD N10H 00	Power source Wiring /1		D	1	

magicolor 4750DN/magicolor 4750EN

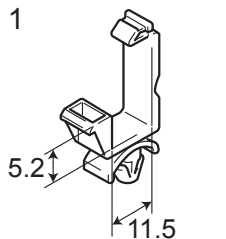
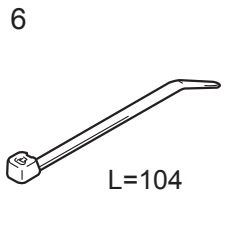
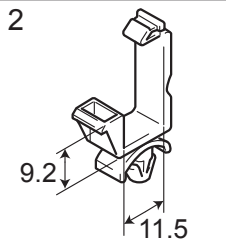
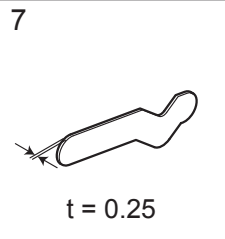
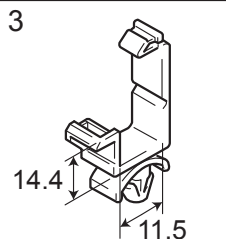
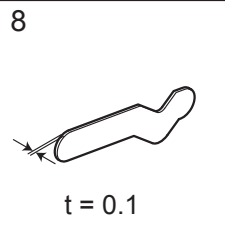
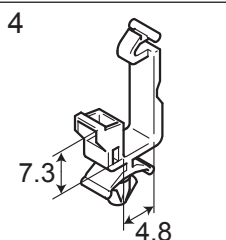
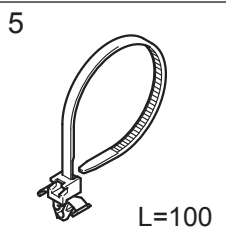


Key	Part No.	Description	Destinations	Class	QTY	Standard parts
1	A0VD N105 00	Drive Wiring /1		D	1	
2	A0VD N102 00	Power supply Wiring /1		D	1	

magicolor 4750DN/magicolor 4750EN

WIRING ACCESSORIES AND JIGS

P 21

1 	6 	11	16	21	26	31	36
2 	7 	12	17	22	27	32	37
3 	8 	13	18	23	28	33	38
4 	9	14	19	24	29	34	39
5 	10	15	20	25	30	35	40

magicolor 4750DN/magicolor 4750EN

Key	Part No.	Description	Destinations	Class	QTY	Standard parts
1	V500 0100 03	Saddle		D		
2	V500 0100 05	saddle		D		
3	V500 0100 07	saddle		D		
4	V500 0100 20	Saddle		D		
5	V501 0100 18	BAND		D		
6	V501 0100 01	band		D		
7	A0VD 9041 00	Spacer t=0.25		D	2	
8	A0VD 9042 00	Spacer t=0.1		D	2	

magicolor 4750DN/magicolor 4750EN

MAINTENANCE LIST

● The items with no Page/Key numbers are not handled as spare parts.

No.	Section	PM Parts Description	Maintenance Cycle (K=1,000)		Parts No.	Destinations	Page/Key	Note
			QTY	Replace				
1	Processing section	Imaging unit (C,M,Y,K)	1	30k	-			Continuous printing 2P/J *1
2		Imaging unit (C,M,Y,K)	1	20k	-			
3		Standard in-box toner cartridge (C,M,Y,K)	1	2k	-			
4		Standard-capacity toner cartridge (C,M,Y,K)	1	4k	-			
5		High-capacity toner cartridge (C,M,Y,K)	1	6k	-			
6	Image transfer section	Waste toner bottle (WB-P03)	1	36k	A1AU001	Japan	P7-19	(monochrome) Continuous printing (monochrome) Continuous printing (full color) Continuous printing (full color) Continuous printing 2P/J *1 2P/J *1
7		Waste toner bottle (WB-P03)	1	36k	A1AU0Y1	except Japan	P7-19	
8		Waste toner bottle (WB-P03)	1	9k	A1AU001	Japan	P7-19	
9		Waste toner bottle (WB-P03)	1	9k	A1AU0Y1	except Japan	P7-19	
10		Transfer roller (TF-P04)	1	100k	A1480Y2		P10-4	
11		Transfer belt unit (TF-P05)	1	100k	A1480Y1		P4-5	
12	Fusing section	Fuser unit (FU-P02)	1	100k	A148001	100V	P13-16	2P/J *1 2P/J *1 2P/J *1
13		Fuser unit (FU-P02)	1	100k	A148011	120V	P13-16	
14		Fuser unit (FU-P02)	1	100k	A148021	230V	P13-16	
15	Tray1 (Manual feed tray)	Tray1 feed roller	1	300k	4138303202		P9-8	
16	Tray2	Tray2 feed roller	1	300k	4138303202		P8-3	

*1: 2pages/job

メンテナンスリスト

● ページ / キーナンバーのないものは、アフターサービス部品ではありません。

No.	区分	PM 部品名称	サイクル (K=1,000)		部品番号	仕向地	頁 / キー	備考
			員数	交換				
1	プロセス部	イメージングユニット (C, M, Y, K)	1	30k	-			連続プリント 2 P / J *1
2		イメージングユニット (C, M, Y, K)	1	20k	-			
3		同梱トナーカートリッジ (C, M, Y, K)	1	2k	-			
4		標準トナーカートリッジ (C, M, Y, K)	1	4k	-			
5		大容量トナーカートリッジ (C, M, Y, K)	1	6k	-			
6	転写部	廃トナーボトル (WB?P 03)	1	36k	A1AU001	国内	P7-19	(モノクロ) 連続プリント (モノクロ) 連続プリント (フルカラー) 連続プリント (フルカラー) 連続プリント 2 P / J *1 2 P / J *1
7		廃トナーボトル (WB?P 03)	1	36k	A1AU0Y1	海外	P7-19	
8		廃トナーボトル (WB?P 03)	1	9k	A1AU001	国内	P7-19	
9		廃トナーボトル (WB?P 03)	1	9k	A1AU0Y1	海外	P7-19	
10		転写ローラー (TF?P 04)	1	100k	A1480Y2		P10-4	
11		転写ベルト (TF?P 05)	1	100k	A1480Y1		P4-5	
12	定着部	定着ユニット (FU?P 02)	1	100k	A148001	100V	P13-16	2 P / J *1 2 P / J *1 2 P / J *1
13		定着ユニット (FU?P 02)	1	100k	A148011	120V	P13-16	
14		定着ユニット (FU?P 02)	1	100k	A148021	230V	P13-16	
15	トレイ1 (手差しトレイ)	給紙ローラー	1	300k	4138303202		P9-8	
16	トレイ1 (標準トレイ)	給紙ローラー	1	300k	4138303202		P8-3	

*1: 2 ページプリント / ジョブ

magicolor 4750DN/magicolor 4750EN

DESTINATION

Destination No.		Destinations		V	Hz	Model No.
A	A1	JAPAN		100	50/60	A0VD002
	A2	JAPAN		200	50/60	
B		USA, CANADA		120	60	A0VD011/ A0VD012
C		EUROPEAN TYPE		220-240	50/60	A0VD021/ A0VD022
D	D1	S.E ASIA TYPE	THAILAND, SRI LANKA, SINGAPORE, MALAYSIA, HONG KONG, PAKISTAN, INDIA, BANGLADESH, INDONESIA	220-240	50/60	A0VD041/ A0VD042
	D3	OCEANIA TYPE	AUSTRALIA, NEW ZEALAND	220-240	50/60	A0VD041/ A0VD042
E		PHILIPPINES		220-240	50/60	A0VD041/ A0VD042
F	F1	SAUDI ARABIA		127	60	A0VD011/ A0VD012
	F2	SAUDI ARABIA		220-240	50/60	A0VD041/ A0VD042
G	G1	C.S AMERICA		220-240	50/60	A0VD021/ A0VD022
	G2	C.S AMERICA		120	60	A0VD011/ A0VD012
H		TAIWAN		110	60	A0VD011/ A0VD012
I		JORDAN, LEBANON, SYRIA, SOUTH AFRICA, IRAQ, IRAN, N.YEMEN, CAMEROON, UAE, BAHRAIN, OMAN, QATAR, KUWAIT, KENYA, TUNISIA, IVORY COAST, MOROCCO		220-240	50/60	A0VD041/ A0VD042

magicolor 4750DN/magicolor 4750EN

Destination No.	Destinations	V	Hz	Model No.
J	CHINA	220-240	50/60	A0VD081/ A0VD082
K	KOREA	220-240	50/60	A0VD041/ A0VD042

magicolor 4750DN/magicolor 4750EN