

KONICA MINOLTA

PARTS GUIDE MANUAL

JUNE 2011

PagePro 4650EN
A0DX011

INFORMATION FOR PARTS GUIDE MANUAL

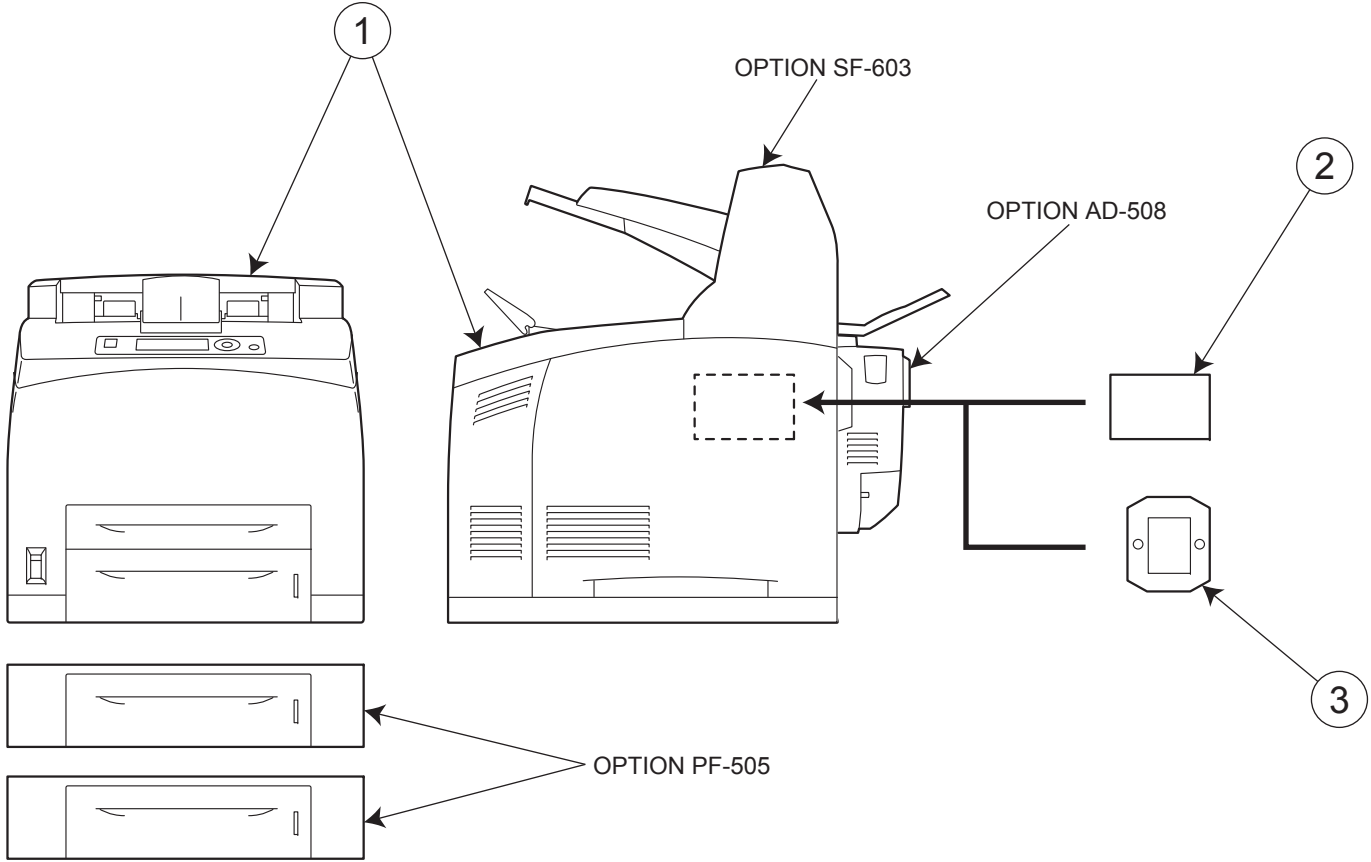
To find correct Parts No., refer to the "HOW TO MAKE THE BEST USE OF THIS MANUAL" in the following page.

HOW TO MAKE THE BEST USE OF THIS MANUAL

- 1 When you order, please check the proper figures beforehand that are on Our Parts Guide Manual, and order with the appropriate figures.
- 2 For screws, Nuts, Washers, retaining rings and Pins which are used in this model, one letter is shown on the Standard parts column of Parts list and exploded diagrams.
- 3 In order to maintain safety of the product, some specific parts composed of this product are set up as "essential safety parts".
- 4 The assigned parts number for the "essential safety parts" is indicated as "SP00-****".
When replacing these parts, follow precautions for disassembling and installing which are listed in the Service Manual.
Do not use any parts that are not set up as
- 5 ♣ means that there are exclusive parts for each destination.
Please check the appropriate destination when you order.
- 6 Revision Mark
Marked as ▲ on the illustration shows that the revision has been made.
- 7 All rights reserved. (any reprints or quotations are prohibited.)
Use of this parts guide manual should be strictly supervised to avoid disclosure of confidential information.

10/22/2007

SYSTEM OUTLINE



Parts Guide Manual "pagepro 4650EN" includes PF-505, AD-508 and SF-603.

GENERAL CONTENTS

No.	Description	Model
1	PRINTER B/W	PagePro 4650EN
2	PRINTER B/W	PagePro 5650EN
3	OTHER OPTION	HD-512
4	OTHER OPTION	MK-717

DIAGRAM OF MAIN PARTS SECTION

CONTENTS

No.	DESCRIPTION	PAGE No.
1	EXTERNAL PARTS	P1
2	150 PAPER CASSETTE	P2
3	550 PAPER CASSETTE	P3
4	PAPER FEED SECTION	P4 P5
5	P/H FUSING SECTION	P6
6	PAPER EXIT SECTION	P7 P8
7	DRIVE SECTION	P9
8	ELECTRICAL COMPONENTS	P10
9	PF-505	P11 P12 P13
10	AD-508	P14
11	SF-603	P15

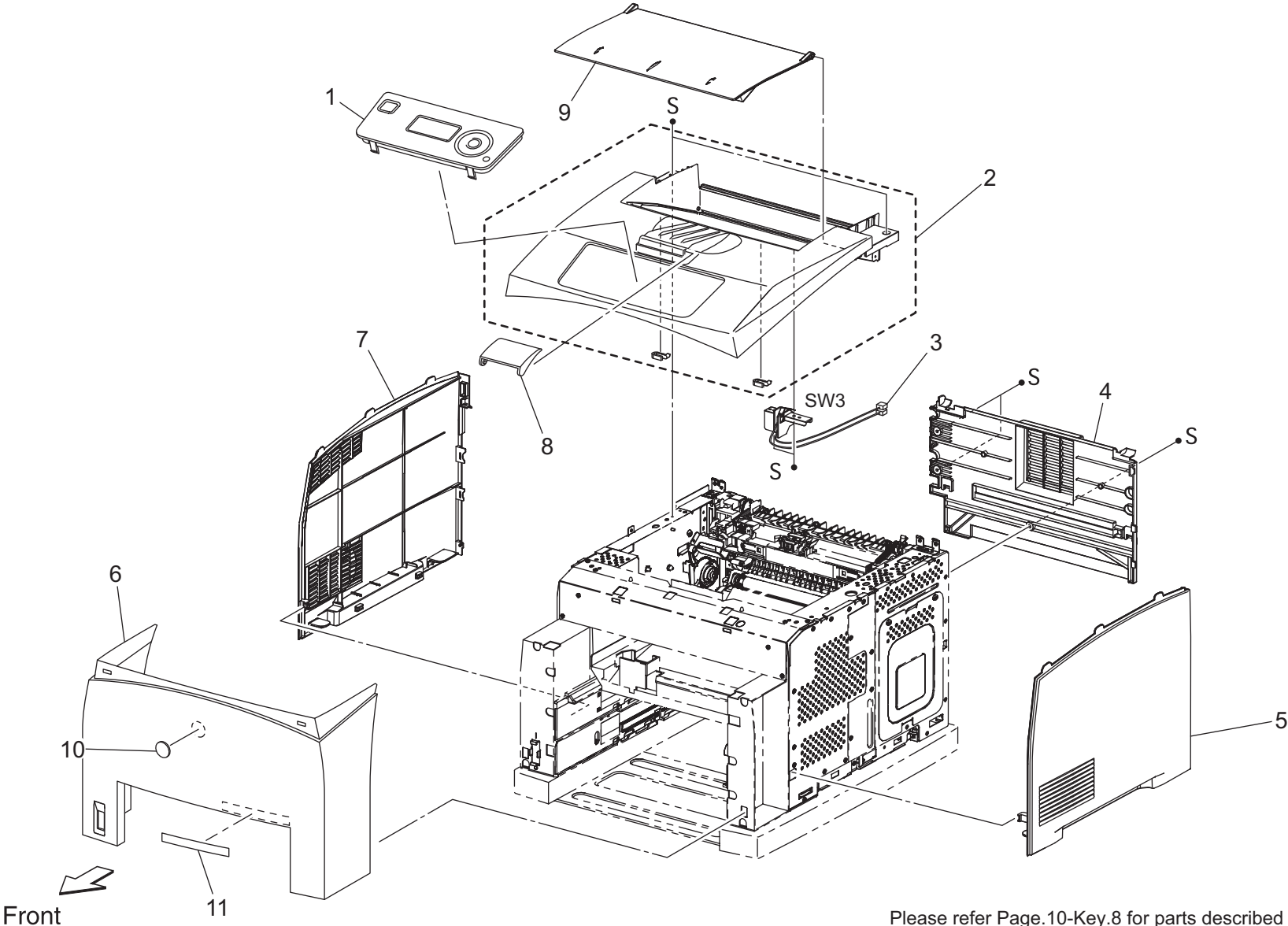
INDEX

Parts No.	Page No.
A00F 9420 00	1-10
A0DX 9401 00	1-11
A0DX M710 09	10-6
A0DX M71A 01	1-1
A0DX PP00 00	11-5
A0DX PP01 01	2-5
A0DX PP02 00	12-4
A0DX PP03 00	5-8
A0DX PP06 00	5-1
A0DX PP07 00	5-7
A0DX PP08 00	15-2
A0DX PP09 00	3-3
A0DX PP09 00	13-3
A0DX PP0A 00	2-4
A0DX PP0B 01	15-12
A0DX PP0C 01	2-6
A0DX PP0D 01	3-4
A0DX PP0E 00	15-10
A0DX PP0F 00	15-4
A0DX PP0H 00	6-2
A0DX PP0J 00	8-1
A0DX PP0N 00	10-2
A0DX PP0P 01	10-2
A0DX PP0P 01	10-2
A0DX PP0S 00	14-9
A0DX PP0S 00	15-7
A0DX PP0T 00	10-3
A0DX PP0U 00	10-4
A0DX PP0V 00	11-3
A0DX PP0W 00	1-3
A0DX PP0Y 00	5-2
A0DX PP10 00	4-2
A0DX PP10 00	5-6
A0DX PP11 00	4-1
A0DX PP11 00	5-4
A0DX PP11 00	12-2
A0DX PP12 00	15-8
A0DX PP13 00	14-3
A0DX PP14 00	14-6
A0DX PP15 00	10-5

Parts No.	Page No.
A0DX PP18 00	11-1
A0DX PP19 00	9-1
A0DX PP1A 00	15-6
A0DX PP1B 00	15-11
A0DX PP1C 00	6-5
A0DX PP1F 00	14-7
A0DX PP1G 00	4-5
A0DX PP1H 00	11-7
A0DX PP1J 00	15-5
A0DX PP1K 00	14-5
A0DX PP1M 01	15-1
A0DX PP1N 00	1-4
A0DX PP1P 00	9-2
A0DX PP1Q 00	4-7
A0DX PP1R 00	2-2
A0DX PP1R 00	3-2
A0DX PP1R 00	4-4
A0DX PP1R 00	5-5
A0DX PP1R 00	12-1
A0DX PP1R 00	13-2
A0DX PP1S 00	6-4
A0DX PP1T 00	6-4
A0DX PP20 00	2-1
A0DX PP20 00	3-1
A0DX PP20 00	13-1
A0DX PP21 00	1-9
A0DX PP22 01	15-3
A0DX PP23 00	1-7
A0DX PP24 00	1-5
A0DX PP25 00	11-6
A0DX PP26 01	14-4
A0DX PP27 01	14-1
A0DX PP28 01	14-2
A0DX PP29 01	14-8
A0DX PP2A 00	6-3
A0DX PP2D 00	2-3
A0DX PP2G 00	11-4
A0DX PP2H 00	4-3
A0DX PP2H 00	5-3
A0DX PP2H 00	7-2

Parts No.	Page No.
A0DX PP2H 00	12-3
A0DX PP2H 00	15-9
A0DX PP2M 00	11-2
A0DX PP2N 00	6-1
A0DX PP2P 00	1-6
A0DX PP2Q 00	1-8
A0DX PP2S 02	10-1
A0DX PP2U 00	4-6
A0DX PP2X 01	1-2
A0DX PP2Y 00	7-1
A0DX PP31 00	7-3
A0DX PP33 00	10-8
A0DX PP38 02	10-1
A0DX PP40 00	10-1
A0DX PP41 00	15-13
A0DX PP45 00	6-6
A0DX PP47 00	6-7
A0DX PP48 00	6-8
A0DX PP49 00	6-9
A0DX PP50 00	7-4
A0DX PP55 00	7-5
A0DX PP56 00	9-3
A0DX PP57 00	6-10
A0DX PP58 00	10-9
A0DX PP59 00	6-11
A0FM 011	10-7
A0FM 0Y1	10-7

EXTERNAL PARTS



Please refer Page.10-Key.8 for parts described as "S" or "E".

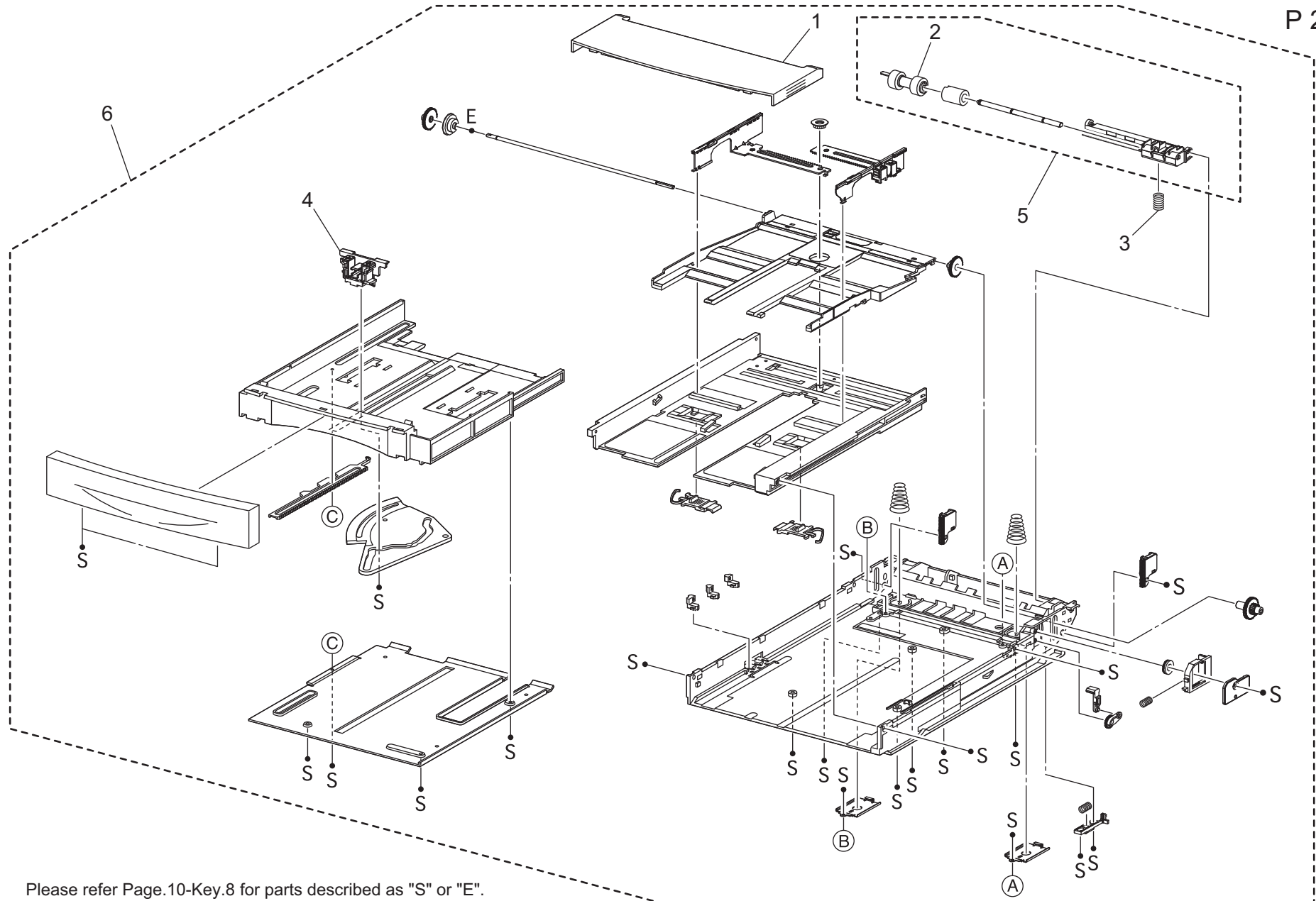


EXTERNAL PARTS

Key	Part No.	Description	Destinations	Class	QTY	Standard parts
1	A0DX M71A 01	OPERATION PANEL 34PPM		I	1	
2	A0DX PP2X 01	KIT TOP COVER		C	1	
3	A0DX PP0W 00	SWITCH I/L ASSY		C	1	
4	A0DX PP1N 00	COVER REAR 34PPM		C	1	
5	A0DX PP24 00	COVER RIGHT		C	1	
6	A0DX PP2P 00	COVER FRONT		C	1	
7	A0DX PP23 00	COVER LEFT		C	1	
8	A0DX PP2Q 00	COVER STOPPER		C	1	
9	A0DX PP21 00	COVER OPEN		C	1	
10	A00F 9420 00	Label Logo Mark		C	1	
11	A0DX 9401 00	Label pagepro4650		C	1	

150 PAPER CASSETTE

P 2

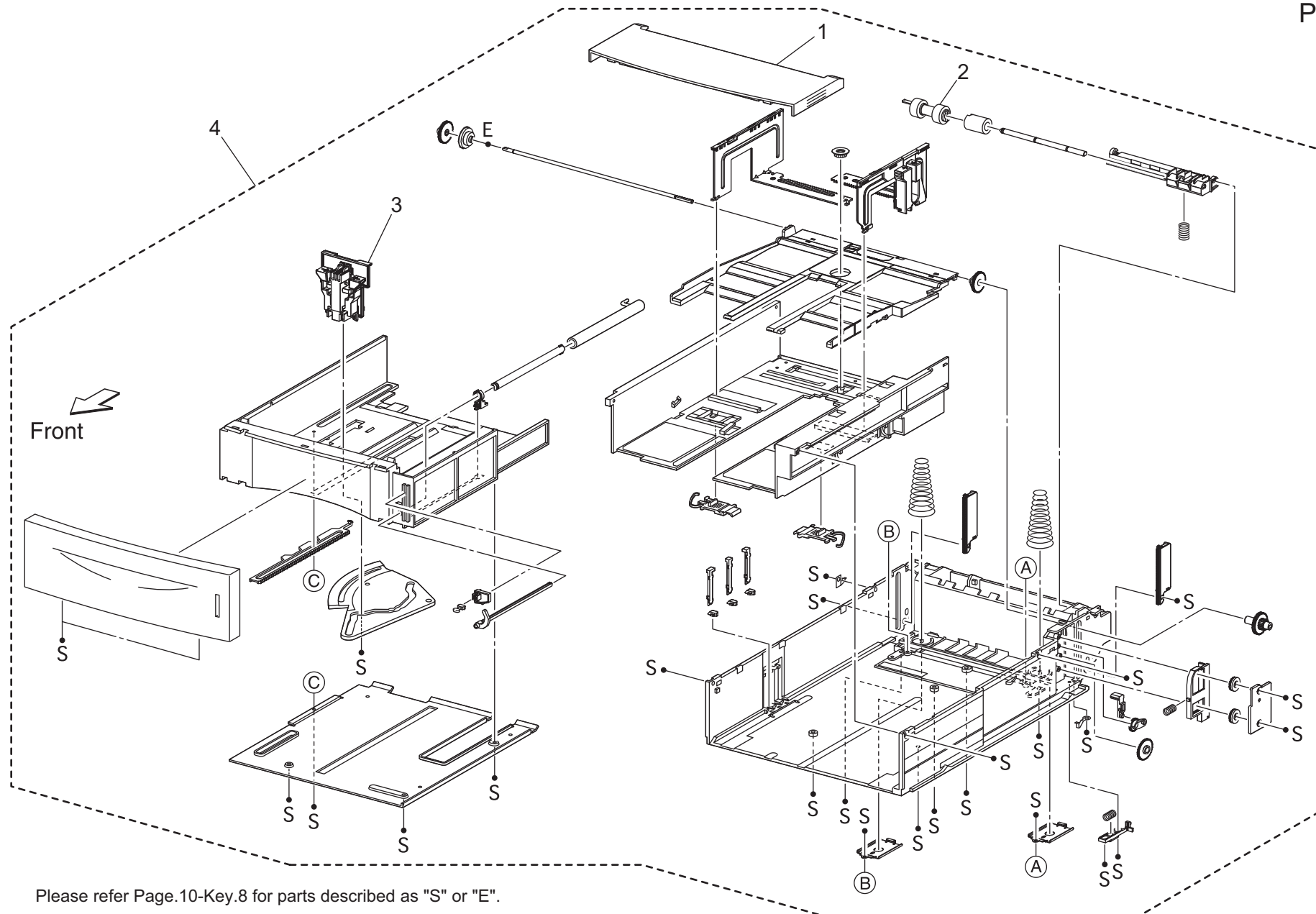


Please refer Page.10-Key.8 for parts described as "S" or "E".

PagePro 4650EN

150 PAPER CASSETTE

Key	Part No.	Description	Destinations	Class	QTY	Standard parts
1	A0DX PP20 00	COVER CST		C	1	
2	A0DX PP1R 00	ROLL ASSY RETARD		C	1	
3	A0DX PP2D 00	SPRING RETARD		C	1	
4	A0DX PP0A 00	GUIDE END 150		C	1	
5	A0DX PP01 01	HOLDER ASSY RETARD		C	1	
6	A0DX PP0C 01	150 PAPER CASSETTE		C	1	



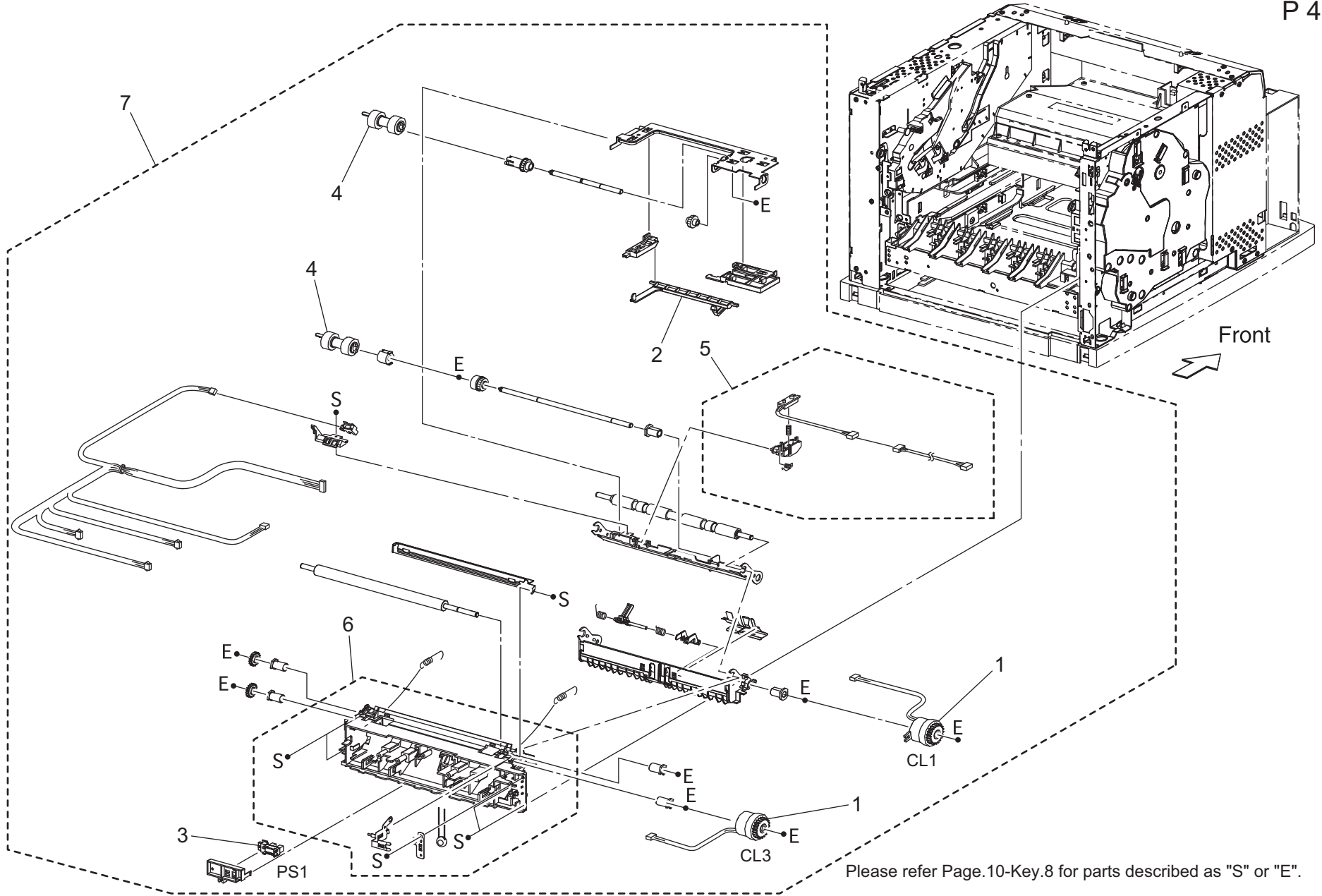
Please refer Page.10-Key.8 for parts described as "S" or "E".

550 PAPER CASSETTE

Key	Part No.	Description	Destinations	Class	QTY	Standard parts
1	A0DX PP20 00	COVER CST		C	1	
2	A0DX PP1R 00	ROLL ASSY RETARD		C	1	
3	A0DX PP09 00	GUIDE END 550		C	1	
4	A0DX PP0D 01	550 PAPER CASSETTE		C	1	

PAPER FEED SECTION

P 4



Please refer Page.10-Key.8 for parts described as "S" or "E".

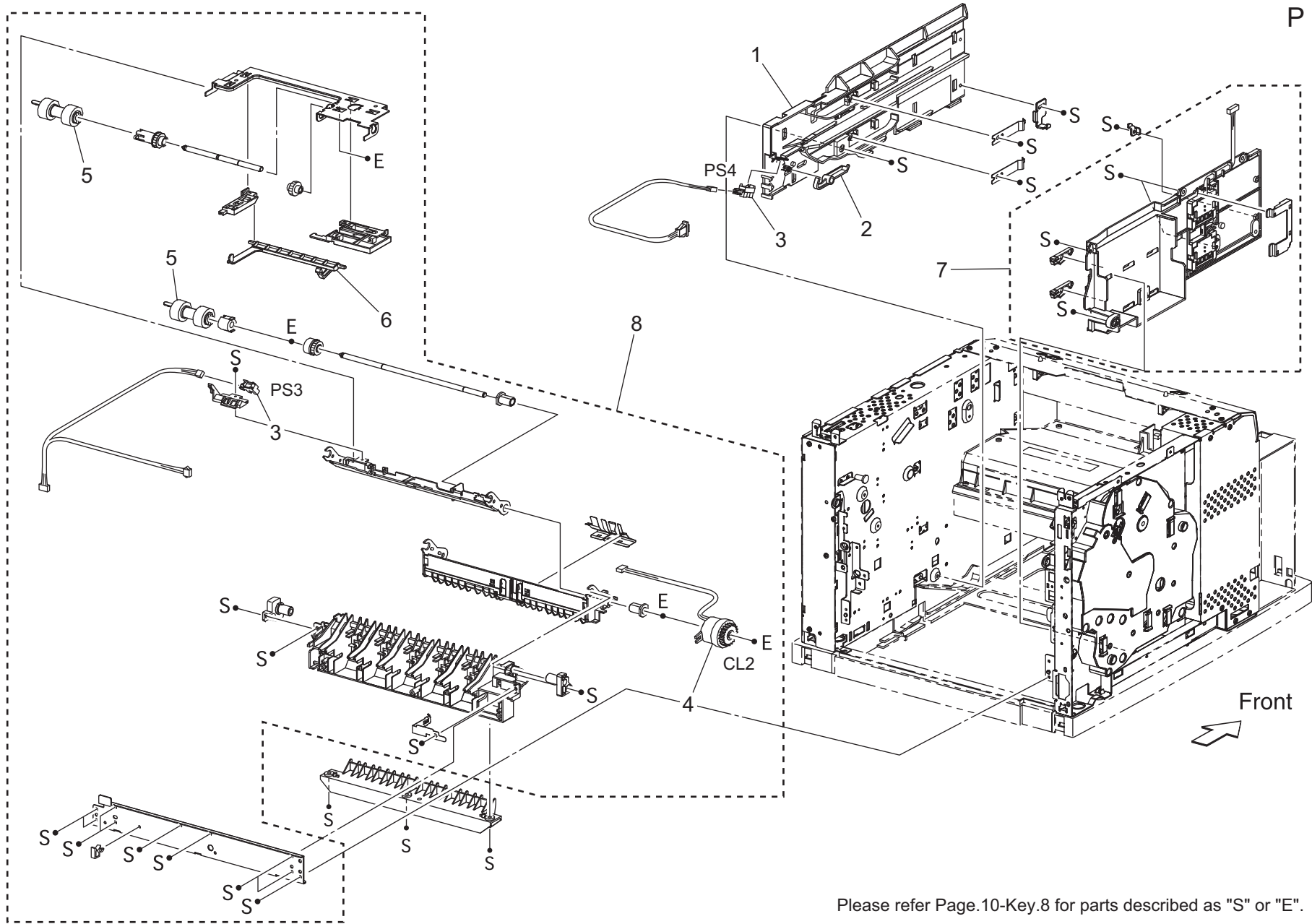
PagePro 4650EN

PAPER FEED SECTION

Key	Part No.	Description	Destinations	Class	QTY	Standard parts
1	A0DX PP11 00	CLUTCH ASSY PH		C	2	
2	A0DX PP10 00	ACTUATOR NO PAPER		C	1	
3	A0DX PP2H 00	SENSOR OCT		I	1	
4	A0DX PP1R 00	ROLL ASSY RETARD		C	2	
5	A0DX PP1G 00	SENSOR TONER ASSEMBLY		C	1	
6	A0DX PP2U 00	KIT CHUTE REGI		C	1	
7	A0DX PP1Q 00	150 FEEDER ASSY		C	1	

PAPER FEED SECTION

P 5



Please refer Page.10-Key.8 for parts described as "S" or "E".

PagePro 4650EN

PAPER FEED SECTION

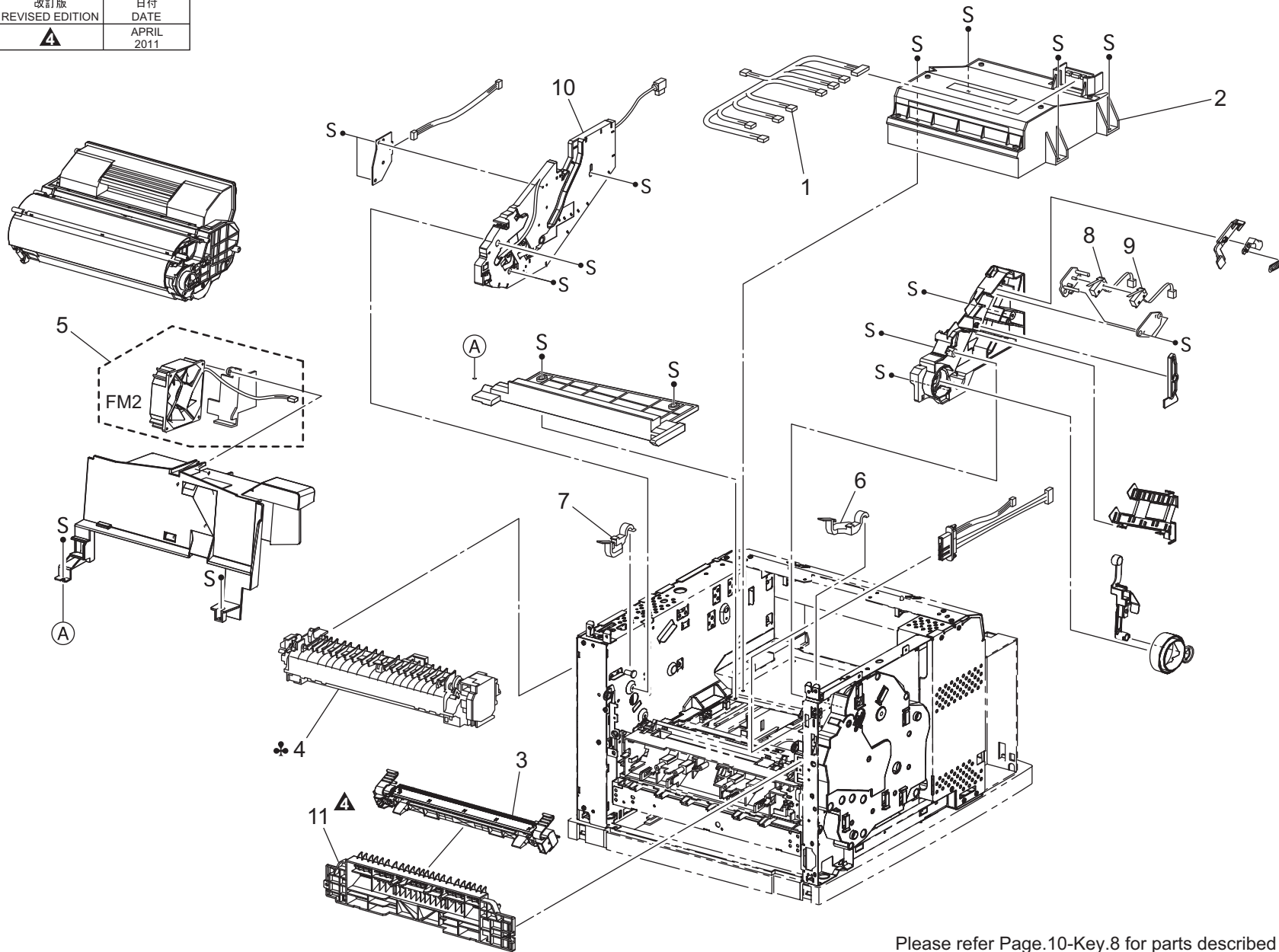
Key	Part No.	Description	Destinations	Class	QTY	Standard parts
1	A0DX PP06 00	GUIDE TRAY RIGHT		D	1	
2	A0DX PP0Y 00	ACTUATOR		C	1	
3	A0DX PP2H 00	SENSOR OCT		I	2	
4	A0DX PP11 00	CLUTCH ASSY PH		C	1	
5	A0DX PP1R 00	ROLL ASSY RETARD		C	2	
6	A0DX PP10 00	ACTUATOR NO PAPER		C	1	
7	A0DX PP07 00	GUIDE TRAY LEFT		C	1	
8	A0DX PP03 00	550 FEEDER ASSY		C	1	

P/H FUSING SECTION

改訂版 REVISED EDITION	日付 DATE
	APRIL 2011

P 6

Front



Please refer Page.10-Key.8 for parts described as "S" or "E".

PagePro 4650EN

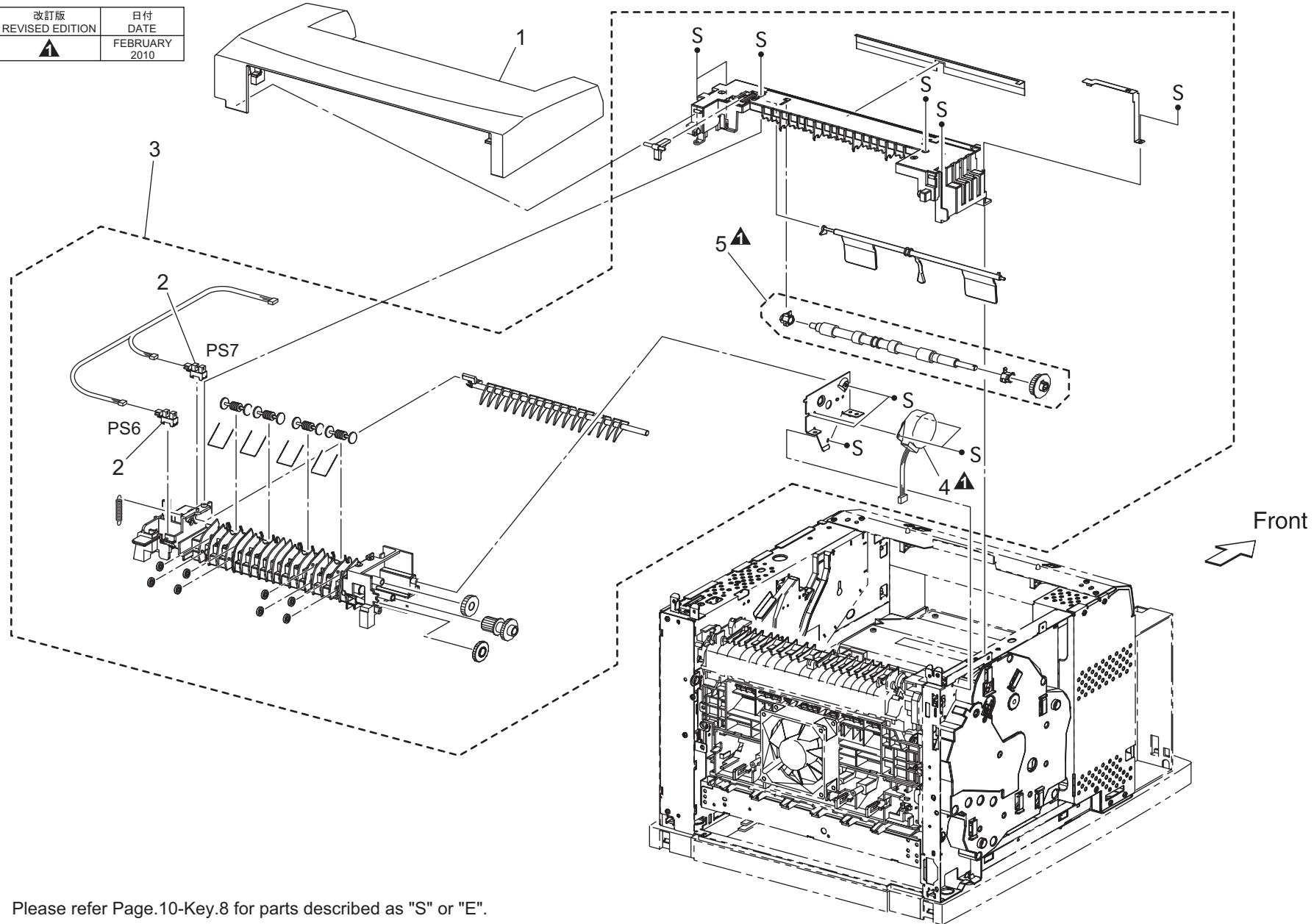
P/H FUSING SECTION

Key	Part No.	Description	Destinations	Class	QTY	Standard parts
1	A0DX PP2N 00	HARNESS ASSY ROS 34PPM		D	1	
2	A0DX PP0H 00	ROS ASSY 34PPM		I	1	
3	A0DX PP2A 00	BTR ASSY		C	1	
4	A0DX PP1S 00	FUSER ASSY 34PPM 110V	B,H	C	1	
4	A0DX PP1T 00	FUSER ASSY 34PPM 220V	C,D,D1,D3,J,K	C	1	
5	A0DX PP1C 00	FAN SUB		B	1	
6	A0DX PP45 00	LEVER FUSER LEFT		C	1	
7	A0DX PP47 00	LEVER FUSER RIGHT(45PPM)		C	1	
8	A0DX PP48 00	INTERLOCK SW		I	1	
9	A0DX PP49 00	INTERLOCK SW		I	1	
10	A0DX PP57 00	GUIDE ASSY		D	1	
11	A0DX PP59 00	Guide		D	1	

PAPER EXIT SECTION

改訂版 REVISED EDITION	日付 DATE
▲	FEBRUARY 2010

P 7



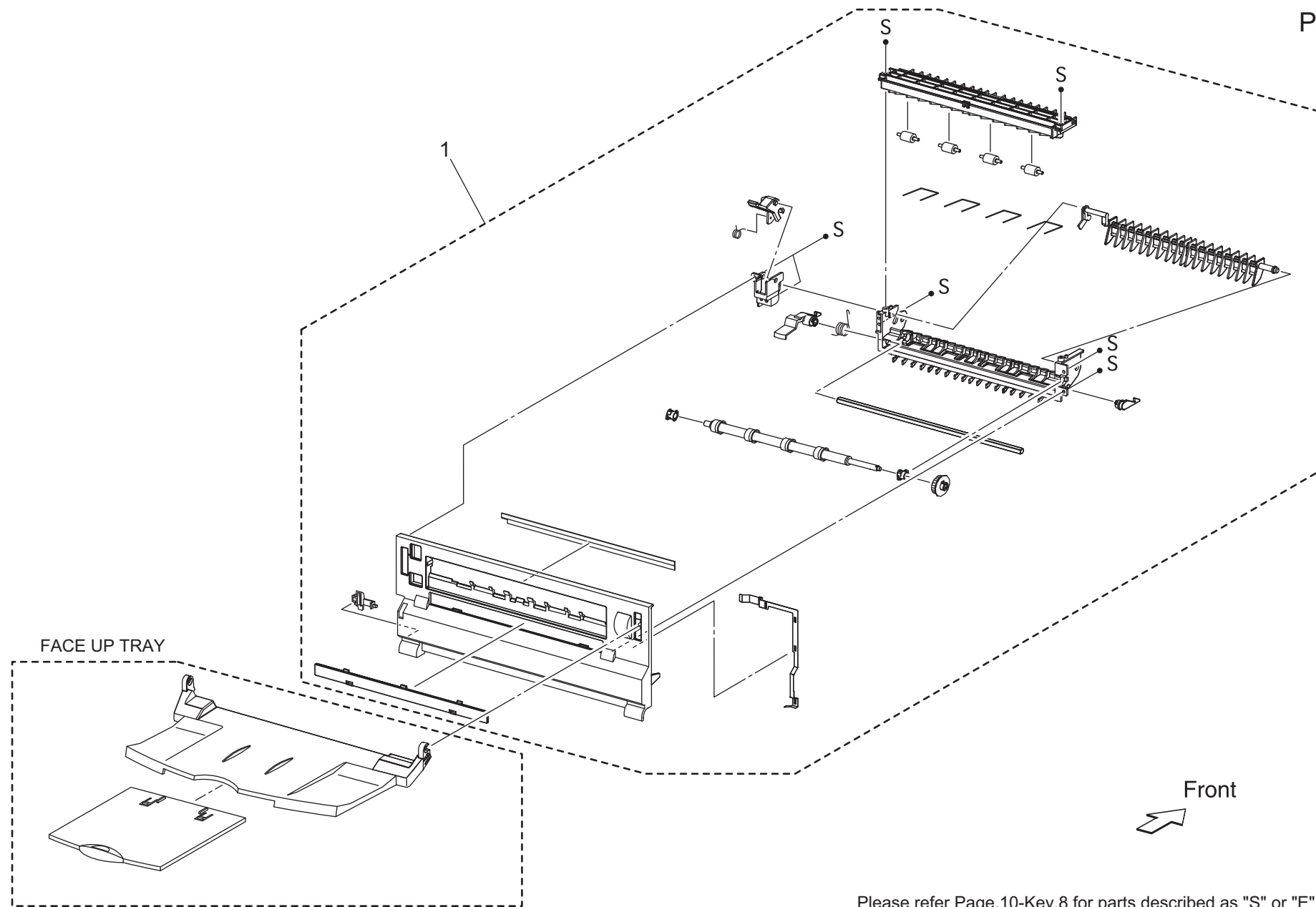
Please refer Page.10-Key.8 for parts described as "S" or "E".

PAPER EXIT SECTION

Key	Part No.	Description	Destinations	Class	QTY	Standard parts
1	A0DX PP2Y 00	COVER EXIT 500		C	1	
2	A0DX PP2H 00	SENSOR OCT		I	2	
3	A0DX PP31 00	500 EXIT ASSY		C	1	
4	A0DX PP50 00	MOTOR ASSY EXIT		B	1	
5	A0DX PP55 00	KIT ROLL EXIT		C	1	

PAPER EXIT SECTION

P 8



Please refer Page.10-Key.8 for parts described as "S" or "E".

PagePro 4650EN

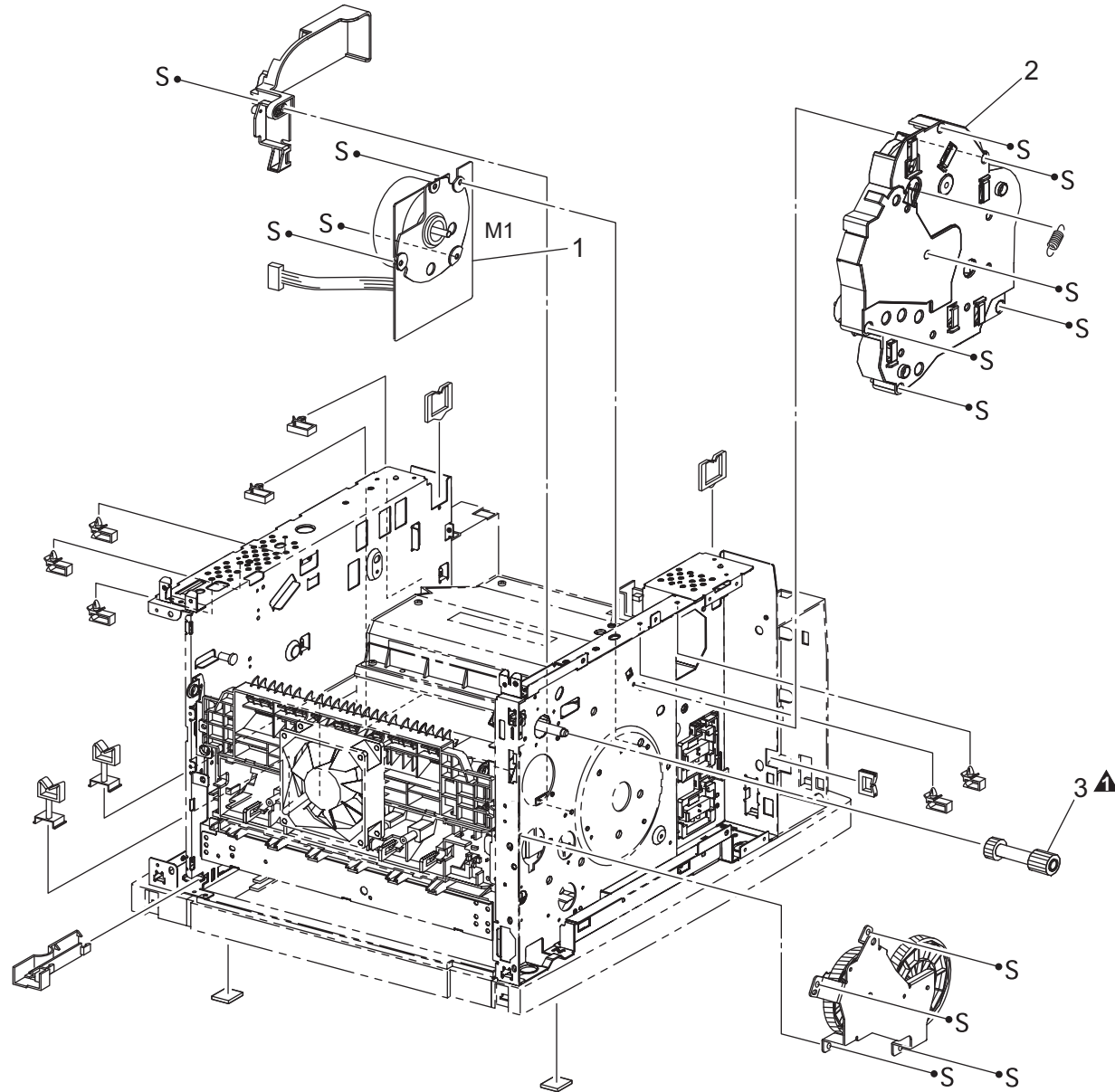
PAPER EXIT SECTION

Key	Part No.	Description	Destinations	Class	QTY	Standard parts
1	A0DX PP0J 00	COVER REAR 500 34PPM		C	1	

DRIVE SECTION

改訂版 REVISED EDITION	日付 DATE
▲	NOVEMBER 2010

P 9

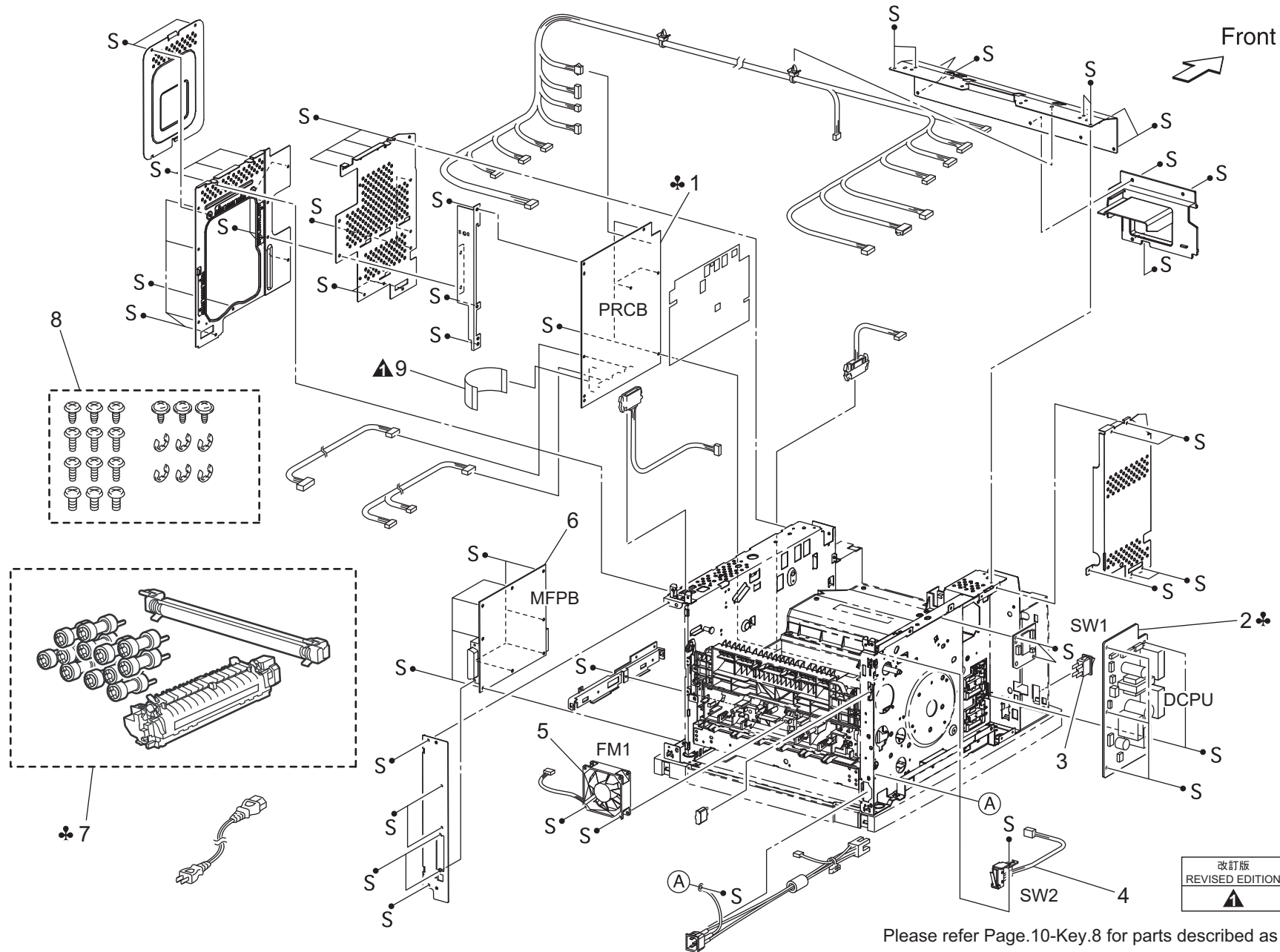


Please refer Page.10-Key.8 for parts described as "S" or "E".

DRIVE SECTION

Key	Part No.	Description	Destinations	Class	QTY	Standard parts
1	A0DX PP19 00	MAIN MOTOR 34PPM		C	1	
2	A0DX PP1P 00	GEAR ASSY HOUSING 34PPM		C	1	
3	A0DX PP56 00	Gear		D	1	

ELECTRICAL COMPONENTS

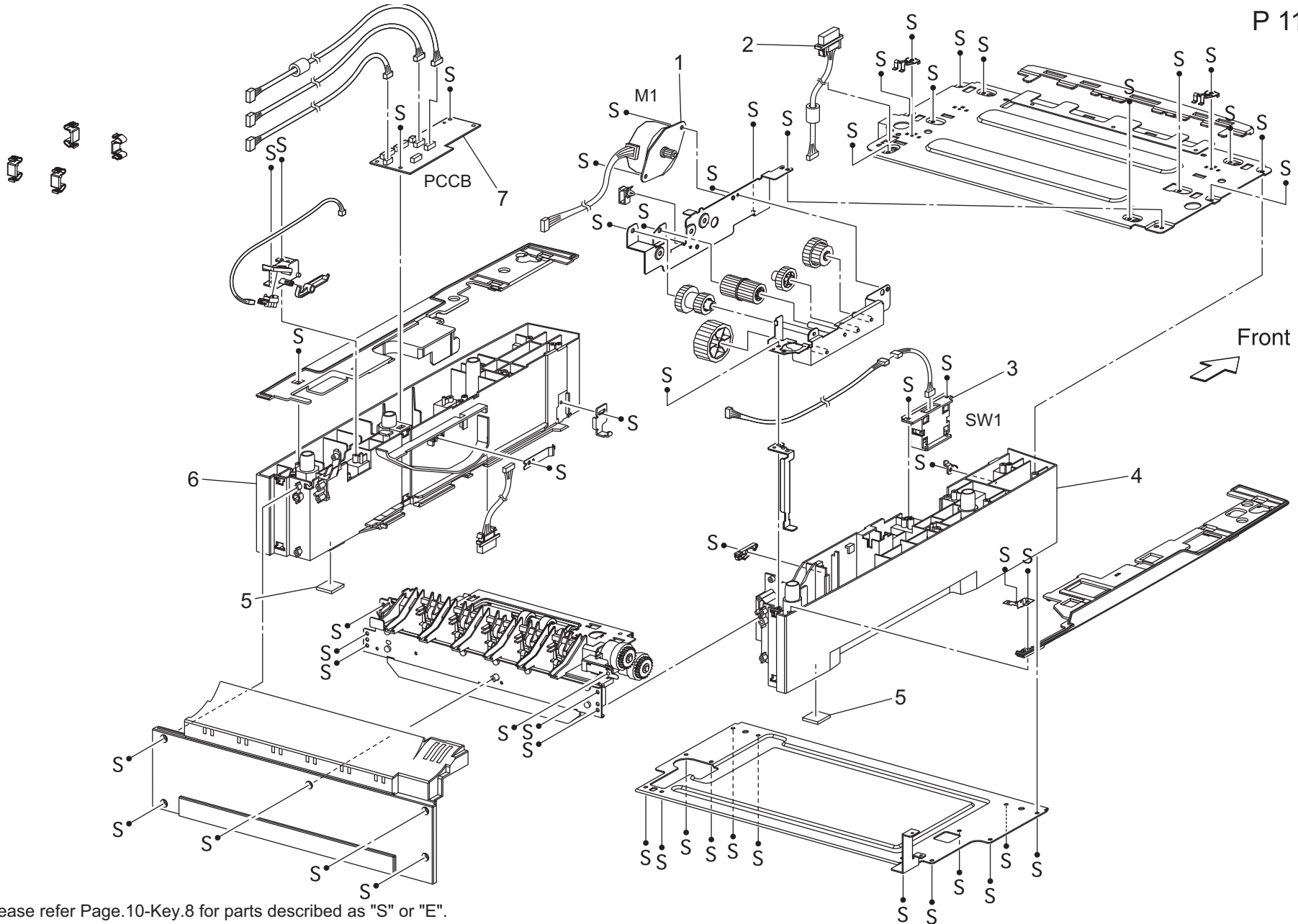


改訂版 REVISED EDITION	日付 DATE
▲	MARCH 2011

Please refer Page.10-Key.8 for parts described as "S" or "E".

ELECTRICAL COMPONENTS

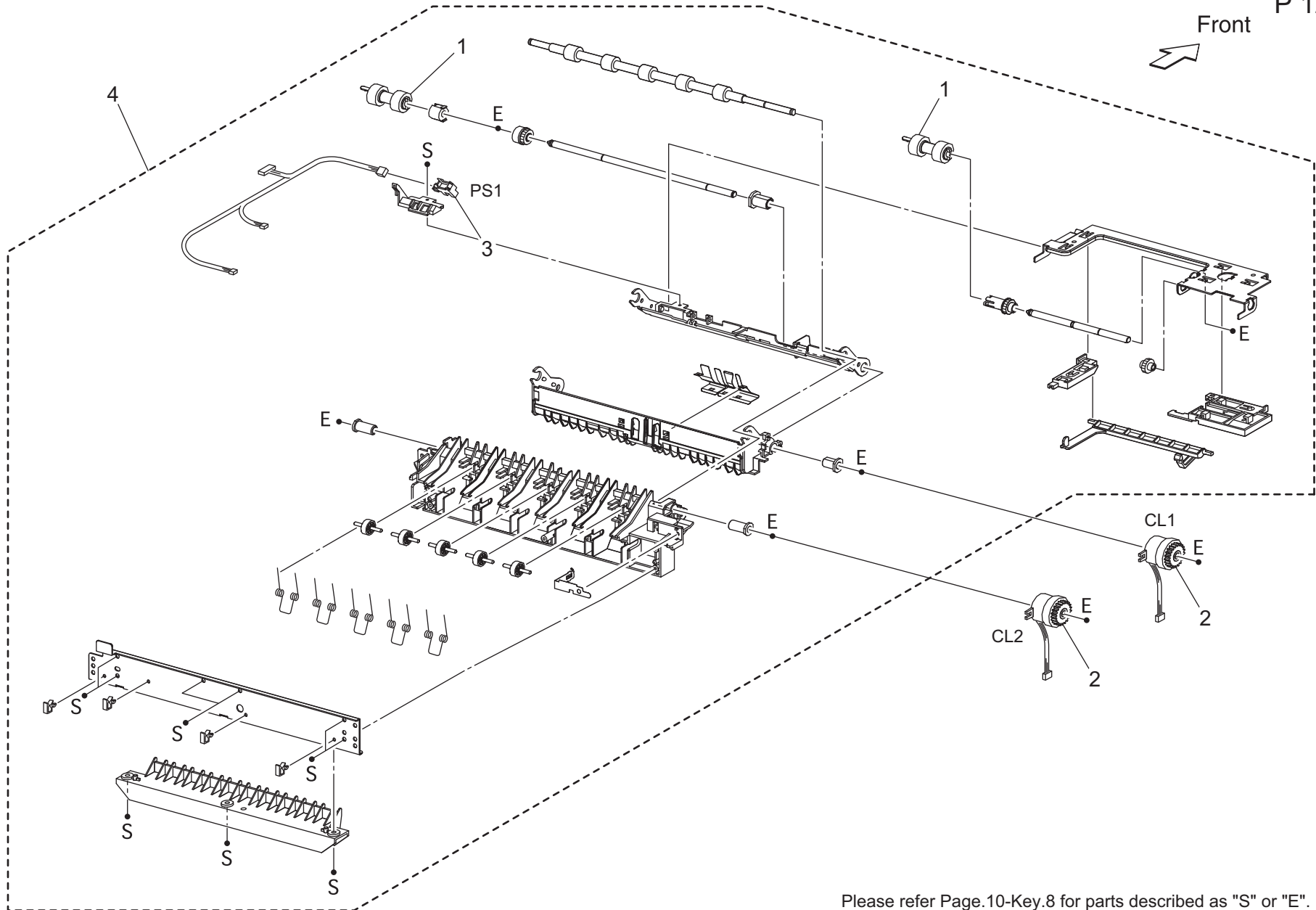
Key	Part No.	Description	Destinations	Class	QTY	Standard parts
1	A0DX PP2S 02	HVPS/MCU 34PPM 1200DPI 110V	B,H	I	1	
1	A0DX PP40 00	HVPS/MCU 34-AP 220V	D, D1, D3, J, K	I	1	
1	A0DX PP38 02	PWB ESS 34PPM	C	I	1	
2	A0DX PP0N 00	LVPS 110V	B,H	I	1	
2	A0DX PP0P 01	LVPS 220V	C	I	1	
2	A0DX PP0P 01	LVPS 220V	D,D1,D3,J,K	I	1	
3	A0DX PP0T 00	POWER SWITCH		C	1	
4	A0DX PP0U 00	INTERLOCK S/W REAR		C	1	
5	A0DX PP15 00	FAN MAIN		C	1	
6	A0DX M710 09	Controller PWB assembly		I	1	
7	A0FM 011	Maintenance Kit 110V	B,H	B	1	
7	A0FM 0Y1	Maintenance Kit 220V	C,D,D1,D3,J,K	B	1	
8	A0DX PP33 00	KIT SCREW		C	1	
9	A0DX PP58 00	FLAT CABLE		C	1	



Please refer Page.10-Key.8 for parts described as "S" or "E".

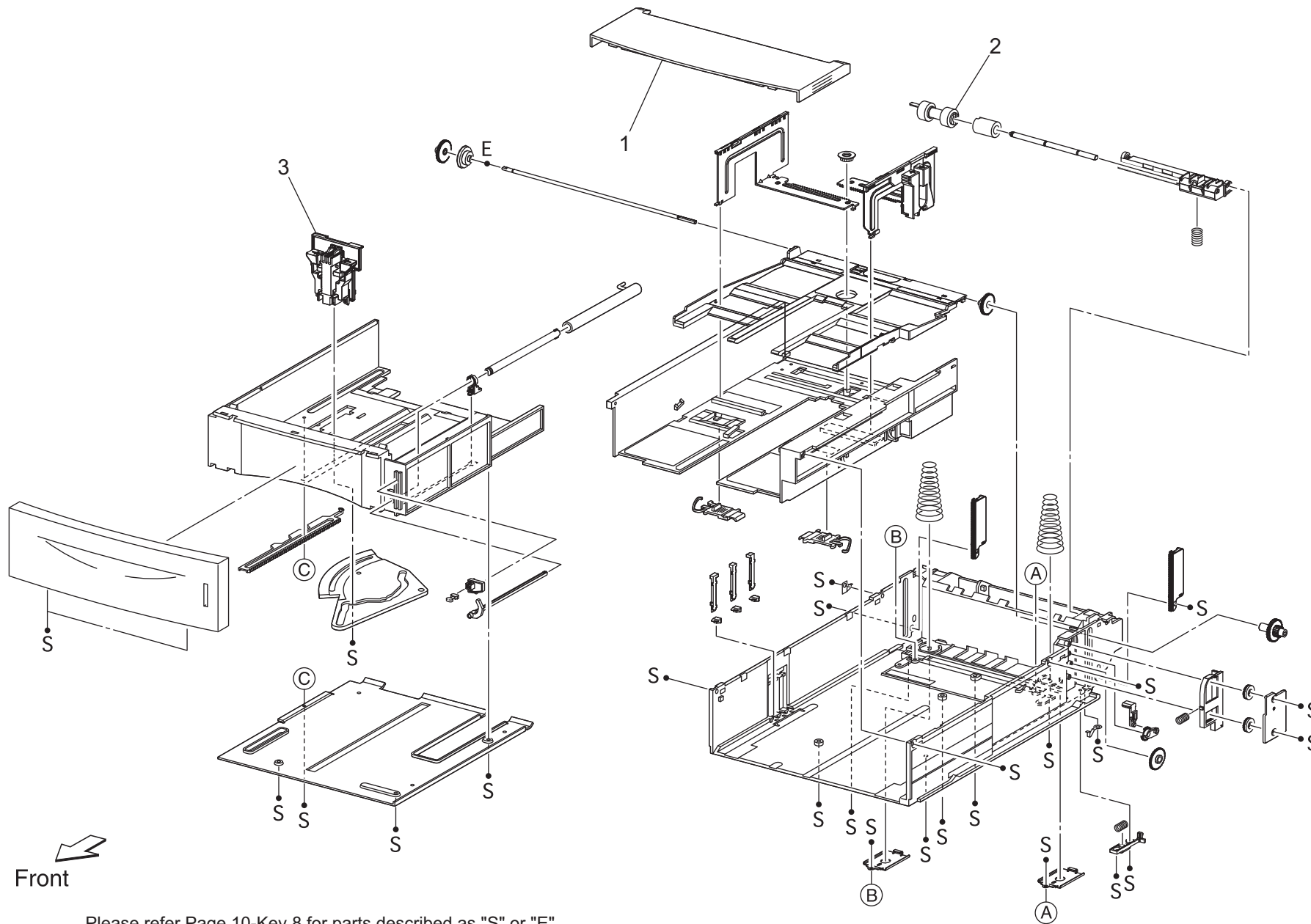
Key	Part No.	Description	Destinations	Class	QTY	Standard parts
1	A0DX PP18 00	MOTOR FEEDER		C	1	
2	A0DX PP2M 00	HARNES ASSY FDR2		D	1	
3	A0DX PP0V 00	OPT ASSY SIZE		C	1	
4	A0DX PP2G 00	FRAME CVR L550		C	1	
5	A0DX PP00 00	FOOT		C	2	
6	A0DX PP25 00	FRAME CVR R550		C	1	
7	A0DX PP1H 00	PWBA FEEDER 550		I	1	

Front



Please refer Page.10-Key.8 for parts described as "S" or "E".

Key	Part No.	Description	Destinations	Class	QTY	Standard parts
1	A0DX PP1R 00	ROLL ASSY RETARD		C	2	
2	A0DX PP11 00	CLUTCH ASSY PH		C	2	
3	A0DX PP2H 00	SENSOR OCT		I	1	
4	A0DX PP02 00	550 FEEDER OPTION		C	1	



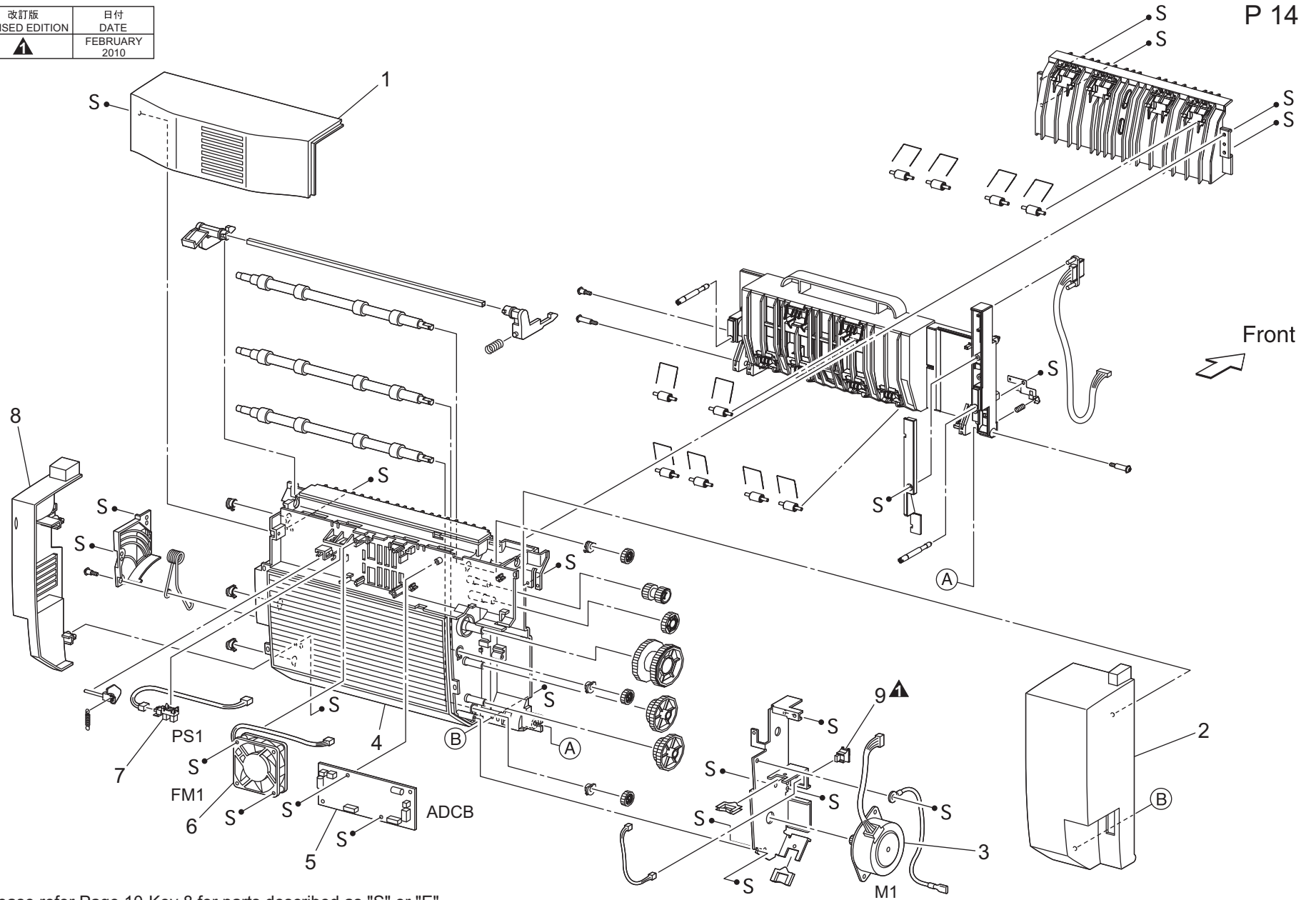
Please refer Page.10-Key.8 for parts described as "S" or "E".

Key	Part No.	Description	Destinations	Class	QTY	Standard parts
1	A0DX PP20 00	COVER CST		C	1	
2	A0DX PP1R 00	ROLL ASSY RETARD		C	1	
3	A0DX PP09 00	GUIDE END 550		C	1	

AD-508

改訂版 REVISED EDITION	日付 DATE
	FEBRUARY 2010

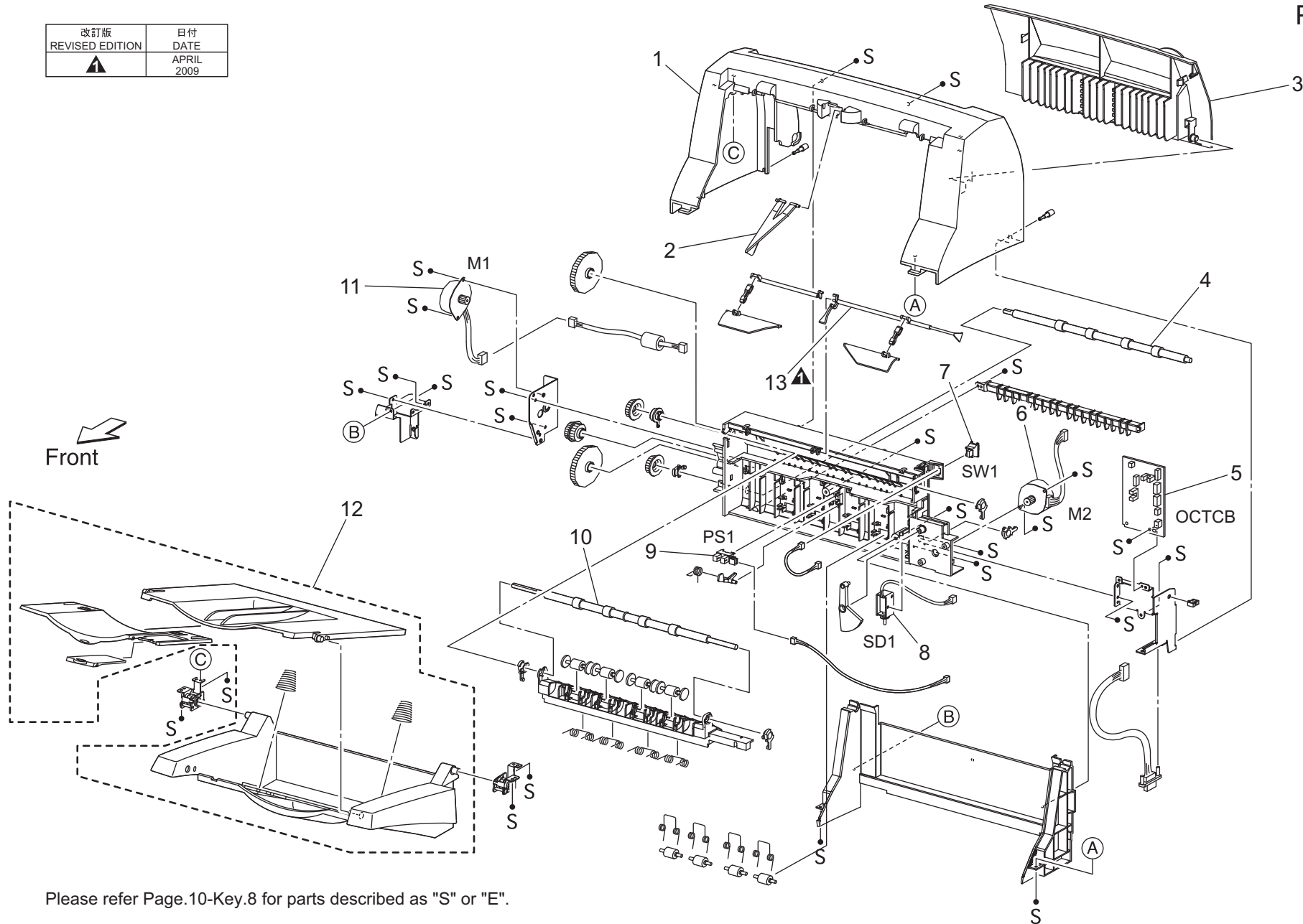
P 14



Please refer Page.10-Key.8 for parts described as "S" or "E".

Key	Part No.	Description	Destinations	Class	QTY	Standard parts
1	A0DX PP27 01	COVER TOP		C	1	
2	A0DX PP28 01	COVER LEFT		C	1	
3	A0DX PP13 00	MOTOR DUPLEX		C	1	
4	A0DX PP26 01	COVER HSG DUP		C	1	
5	A0DX PP1K 00	PWBA DUPLEX		I	1	
6	A0DX PP14 00	FAN DUPLEX		C	1	
7	A0DX PP1F 00	SENSOR DUP		I	1	
8	A0DX PP29 01	COVER RIGHT		C	1	
9	A0DX PP0S 00	S/W REAR COVER		C	1	

改訂版 REVISED EDITION	日付 DATE
▲	APRIL 2009



Please refer Page.10-Key.8 for parts described as "S" or "E".

Key	Part No.	Description	Destinations	Class	QTY	Standard parts
1	A0DX PP1M 01	COVER OCT		C	1	
2	A0DX PP08 00	WEIGHT		D	1	
3	A0DX PP22 01	COVER REAR		C	1	
4	A0DX PP0F 00	ROLL OCT LOWER		C	1	
5	A0DX PP1J 00	PWBA OCT		I	1	
6	A0DX PP1A 00	MOTOR ASSY OFFSET		C	1	
7	A0DX PP0S 00	S/W REAR COVER		C	1	
8	A0DX PP12 00	SOLENOID ASSY GATE		C	1	
9	A0DX PP2H 00	SENSOR OCT		I	1	
10	A0DX PP0E 00	ROLL OCT UPPER		C	1	
11	A0DX PP1B 00	MOTOR ASSY OCT		C	1	
12	A0DX PP0B 01	TRAY ASST OCT		C	1	
13	A0DX PP41 00	ACTUATOR		C	1	

MAINTENANCE LIST

● The items with no Page/Key numbers are not handled as spare parts.

No.	Section	PM Parts Description	Maintenance Cycle (K=1,000)		Parts No.	Destinations	Page/Key	Note
			QTY	Replace				
1	-	Maintenance Kit 110V *3	1	200K *1	A0FM011	for 4650EN, 110 V	P10-7	*2
2	-	Maintenance Kit 220V *3	1	200K *1	A0FM0Y1	for 4650EN, 220 V	P10-7	*2

*1: Continuous printing, B/W ratio: 5 %

*2: For details about maintenance procedure of lower feeder unit, see the optional lower feeder unit service manual.

*3: The Maintenance kit includes Rollers(for feed roller, pick-up roller and separation roller), Transfer roller and Fuser unit.

DESTINATION

Destination No.		Destinations		V	Hz	Model No.
A	A1	JAPAN		100	50/60	
	A2	JAPAN		200	50/60	
B		USA, CANADA		120	60	A0DX-011
C		EUROPEAN TYPE		220-240	50/60	A0DX-021
D	D1	S.E ASIA TYPE	THAILAND, SRI LANKA, SINGAPORE, MALAYSIA, HONG KONG, PAKISTAN, INDIA, BANGLADESH, INDONESIA	220-240	50/60	A0DX-041
	D3	OCEANIA TYPE	AUSTRALIA, NEW ZEALAND	220-240	50/60	A0DX-041
E		PHILIPPINES		220-240	50/60	
F	F1	SAUDI ARABIA		127	60	
	F2	SAUDI ARABIA		220-240	50/60	
G	G1	C.S AMERICA		220-240	50/60	
	G2	C.S AMERICA		120	60	
H		TAIWAN		110	60	A0DX-011
I		JORDAN, LEBANON, SYRIA, SOUTH AFRICA, IRAQ, IRAN, N.YEMEN, CAMEROON, UAE, BAHRAIN, OMAN, QATAR, KUWAIT, KENYA, TUNISIA, IVORY COAST, MOROCCO		220-240	50/60	
J		CHINA		220-240	50/60	A0DX-041
K		KOREA		220-240	50/60	A0DX-041